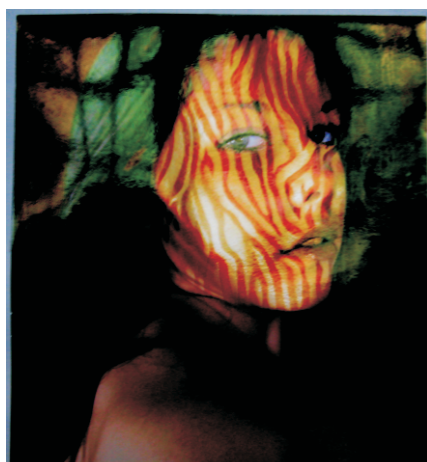
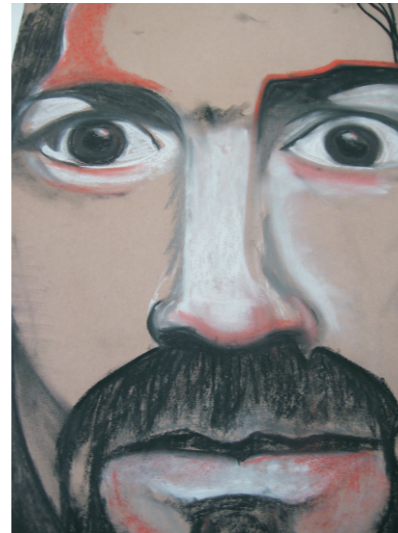


Self portrait SoW Year 13

Breakdown of SoW:

- On A3 page draw out self portrait using the measurement of the eye to correctly proportion the features of the face.
- Divide page into 4 quarters. From observation of photo produce 4 studies to develop mark making skills. The 4 studies incorporate line and tonal studies in graphite pencil biro drawings and water colour sketching (as seen in example 1 produced in preparation to teach the SoW).
- On an A2 piece of sugar paper the class then produce a pastel study of their self portrait, learning how to blend colours and tones and create studies which incorporate studies of light hitting the face, forming areas of highlights and shadows.
- Using a piece of thin MDF or Plywood, purchased by the class to a specific measurement, the year 10's will then experiment with found textiles which they glue onto their board then paint over in white base coat. The class then have to produce another self portrait study this time learning how to use acrylics (blocking, blending, tonal effects with one colour etc.)
- The last self portrait the class produce teaches them how to combine their portrait with a famous art work by the artist they have been learning about for homework. The final piece uses textiles and wood cuts to form an abstract portrait and is produced using acrylics.



1	2	3
4	5	
6	7	
8	9	10

- 1 Pencil sketch looking in mirror
- 2 Pastel
- 3 & 5 Painted and pastel version of portrait
- 4 Oil painting self portrait
- 6 Pastel sketch looking in mirror
- 7/10 Paint and newspaper collage versions
- 8 Layered photographic version with texture
- 9 Portraiture display stand