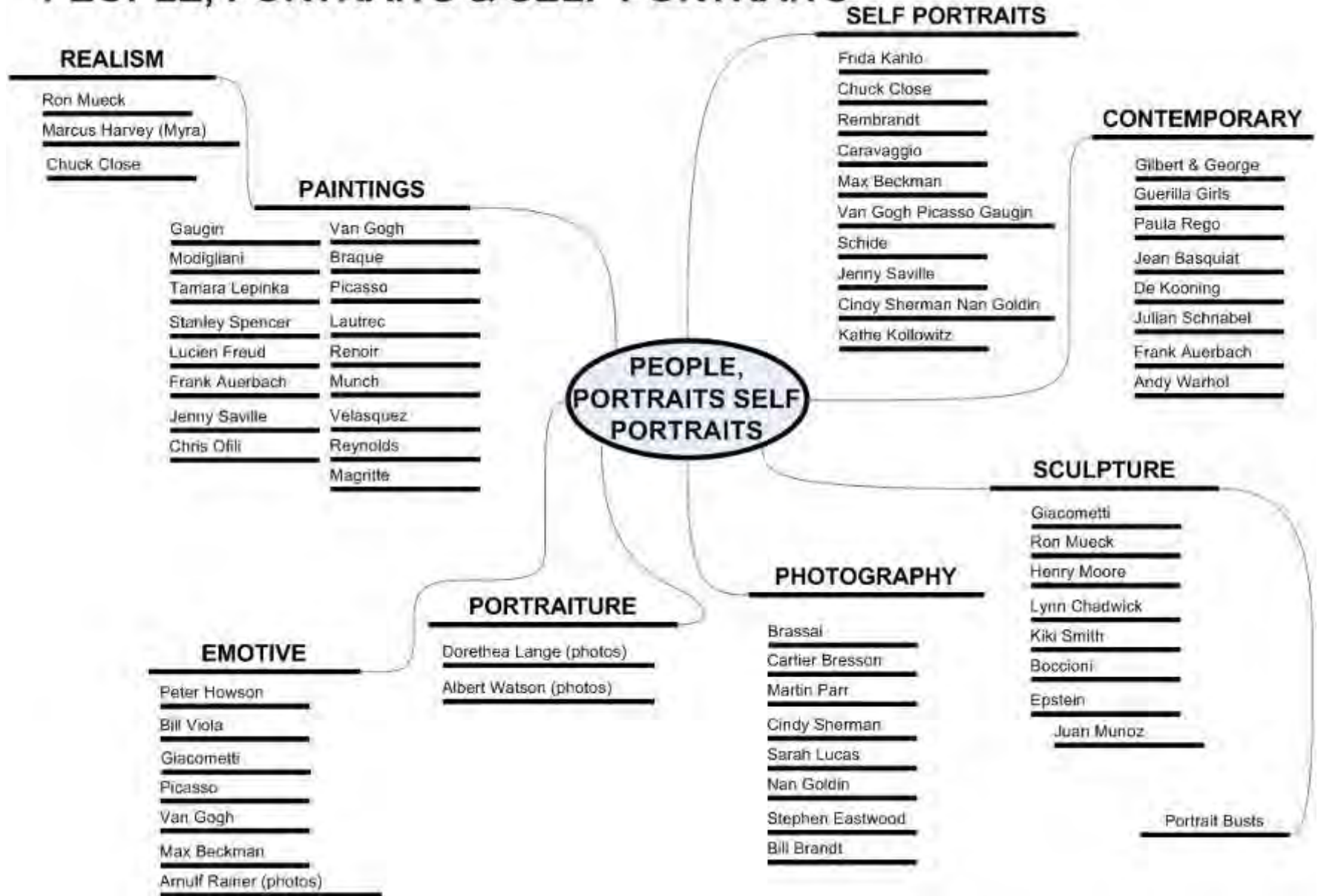




PORTRAITS, SELF
PORTRAITS AND PEOPLE

HCB

PEOPLE, PORTRAITS & SELF PORTRAITS





ABEL, Christine L'Homme d'Affaire 2003



ADAMSON, George Blue Smoke



Banksy

Francis Bacon



Self Portrait, 1969



Self Portrait with Injured Eye, 1972



Self Portrait, 1973



Three Studies for Self-Portrait, 1974



Three Studies for Self-Portrait, 1974



Three Studies for Self-Portrait, 1974



Self Portrait, 1975



Two Studies for Self-Portrait, 1977



Two Studies for Self-Portrait, 1977



Self Portrait, 1979



Self Portrait, 1980



Self Portrait, 1987



BECKMAN Max Paris Society 1931



BECKMAN, Max Brother and Sister
1933



BECKMAN, Max Dancing Bar in
Baden Baden 1923



BECKMAN, Max Family Picture 1920

Max BECKMAN Self Portraits



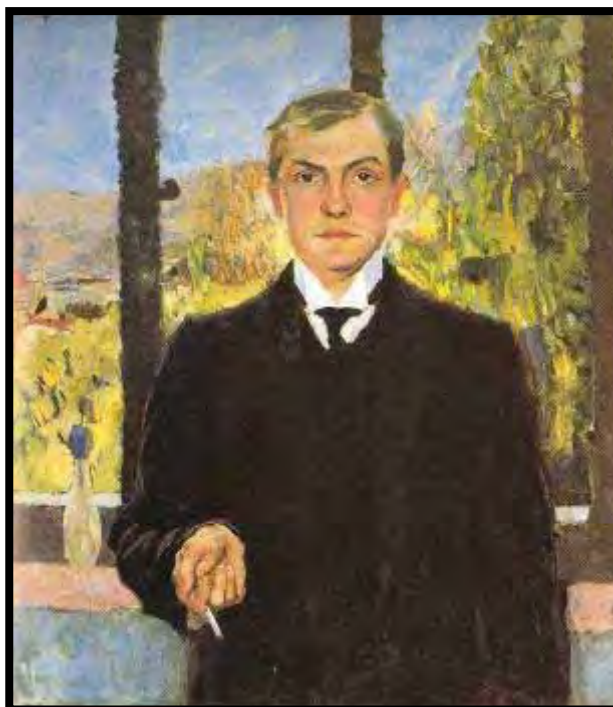
Self Portrait as Clown 1921



Self Portrait in Tuxedo 1927



Self Portrait with Champagne Glass 1919



Self Portrait in Florence 1907



Bevan, Robert Self Portrait c1914



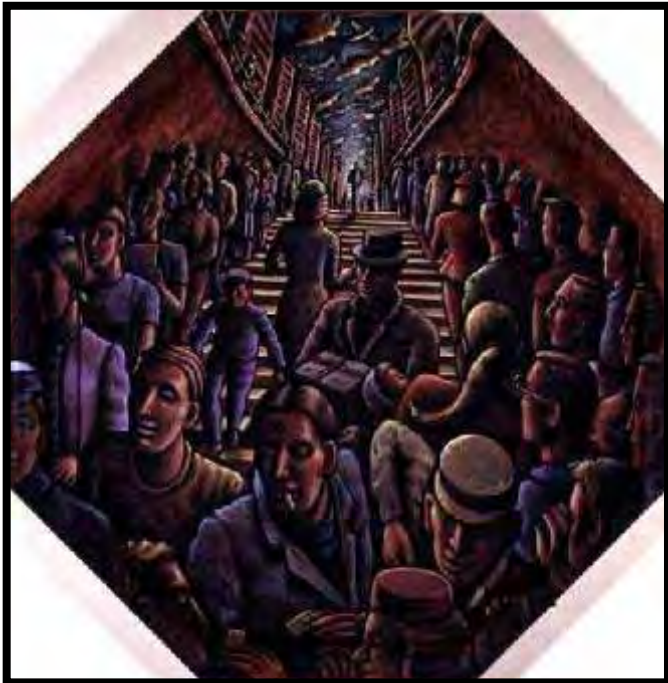
BOWERS, David fragmented womanhood



BOYCE, Sonia From Tarzan to Rambo 1987



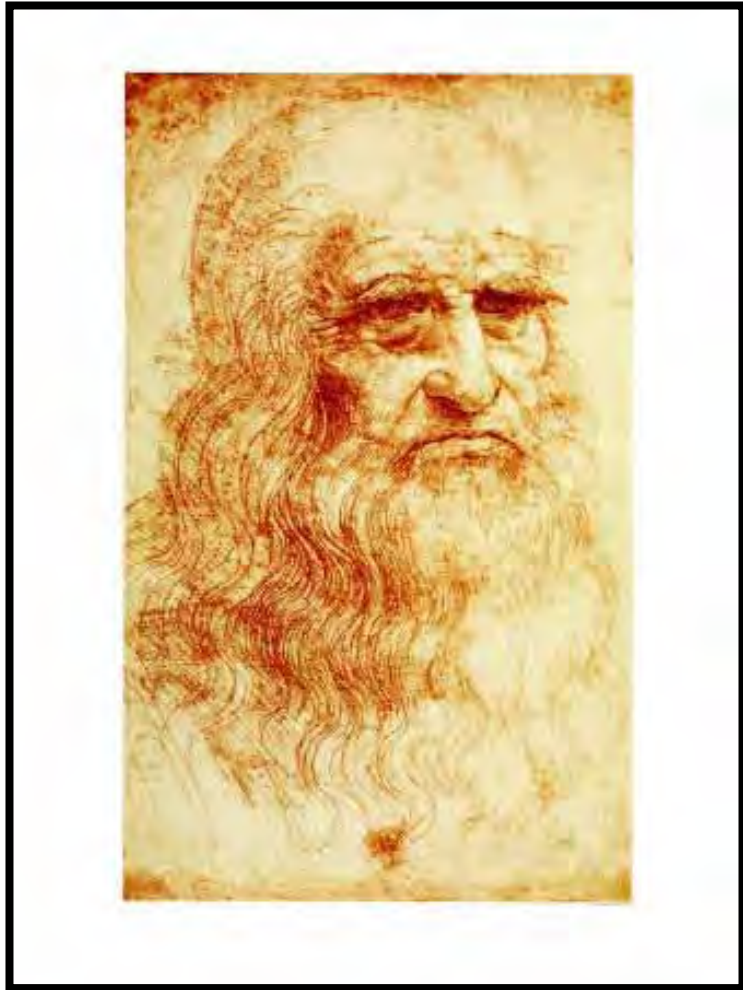
CROOK, PJ Sidewalkers



CROOK, PJ Subway



CROOK, PJ City 1993



Da Vinci, leonardo self portrait 1515



Des GRANGES, David The Saltonstall Family 1637



DAVID, Jacques-Louis Death of Socrates 1787



DAVID, Jacques-Louis Self
Portrait 1794



DAVID, Jacques-Louis Death of Marat 1793



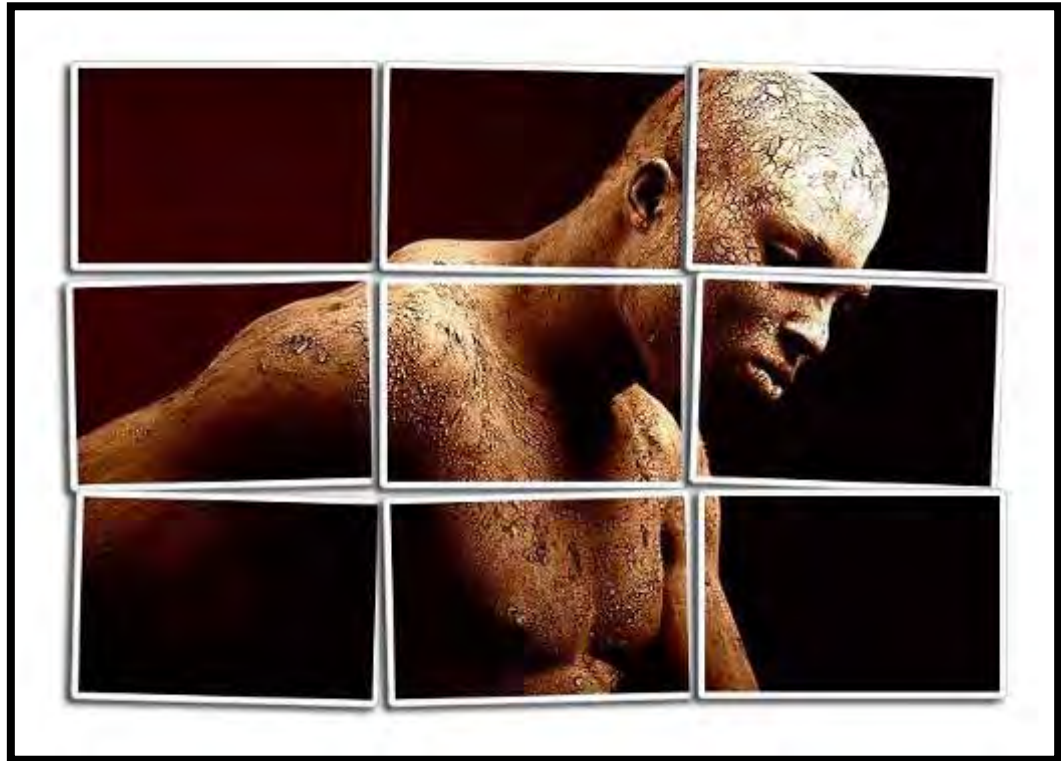
de Lempicka, Tamara 1930s



de Lempicka, Tamara Sleeping Lady 1931



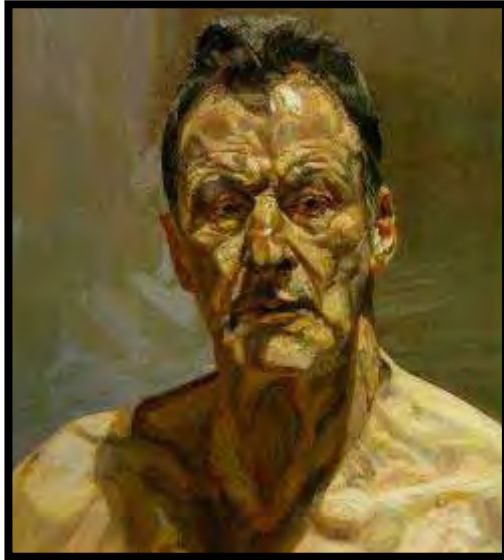
Eastwood Stephen 2006



Eastwood Stephen - Alex sliced



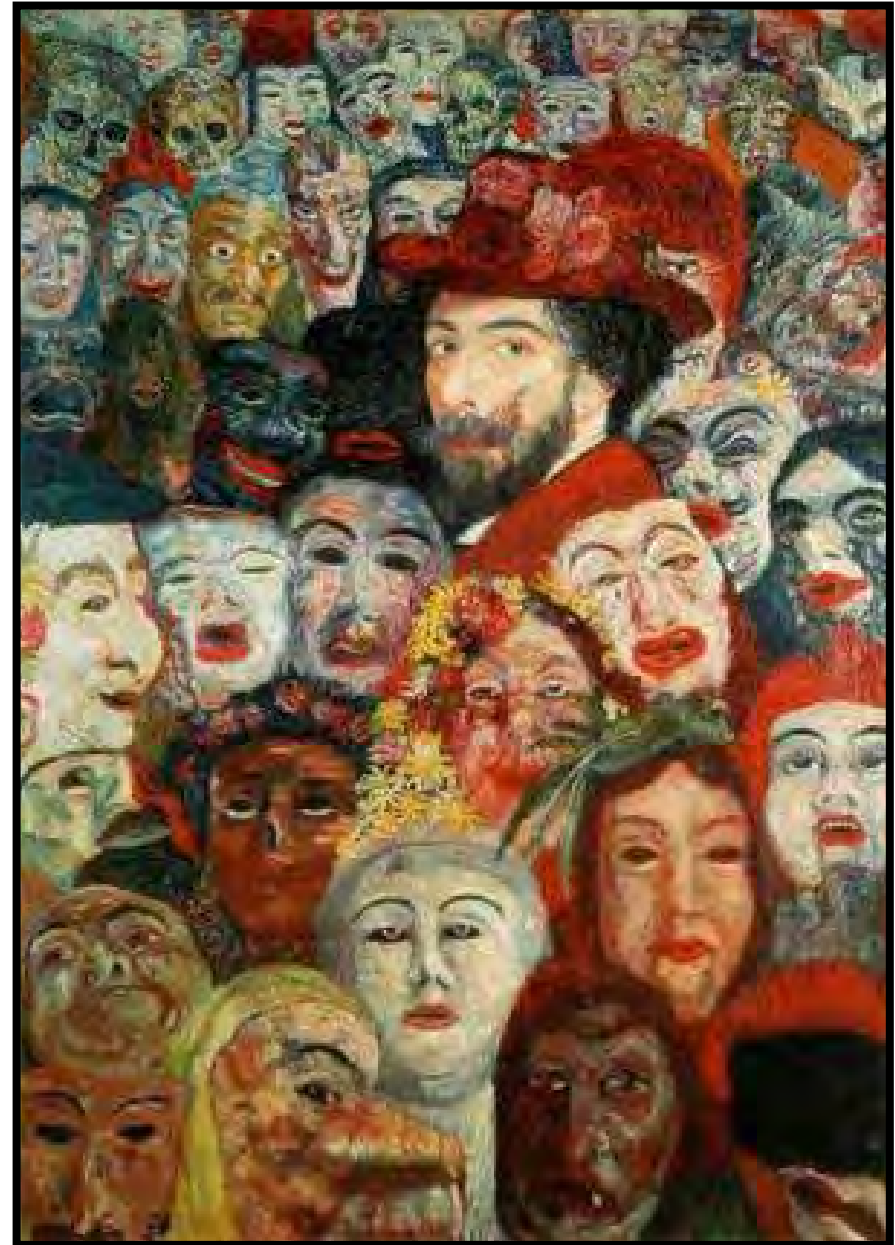
Eastwood Stephen tiled elements



Freud, Lucien self portrait 1985



FERGUSON, Max Mr Gordon 2000



ENSOR, James Portrait of the Artist surrounded by Masks 1889



Gilbert & George cry



Gilbert & George Dream 1984



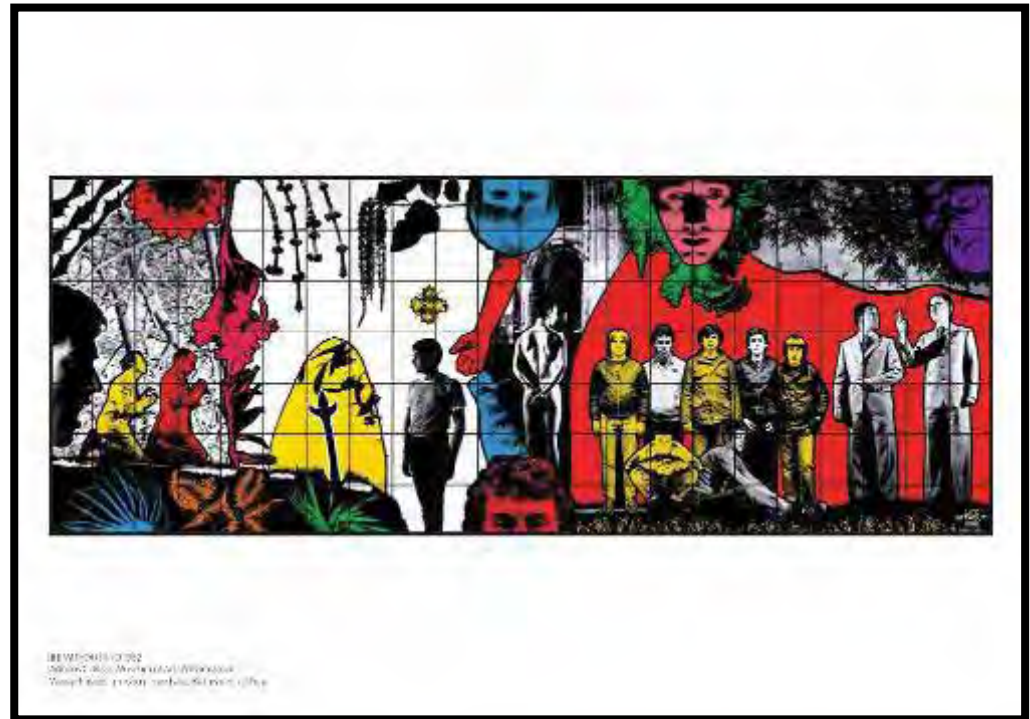
GILBERT & GEORGE Fates 2005



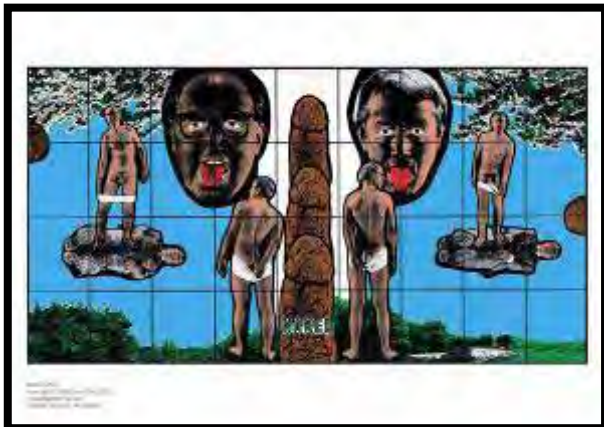
Gilbert & George Here 1987



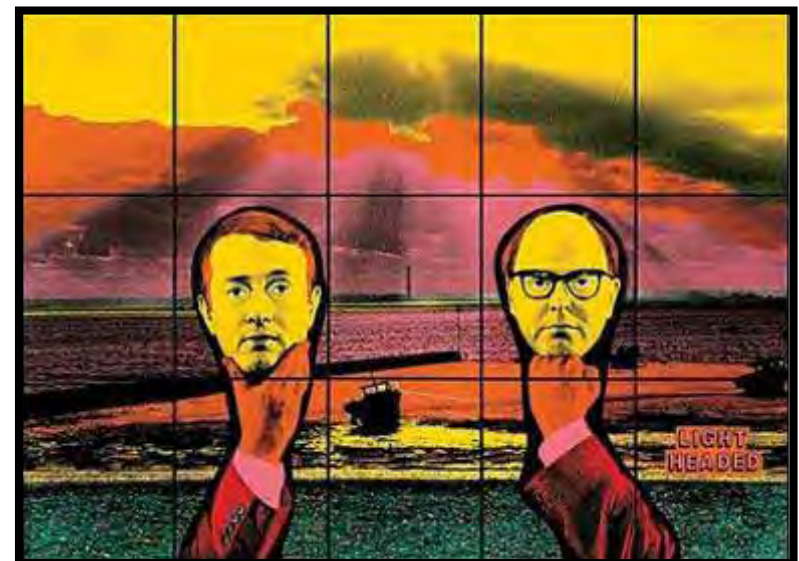
Gilbert & George Life 1986



GILBERT & GEORGE Life without End 1982



GILBERT & GEORGE Naked 1994



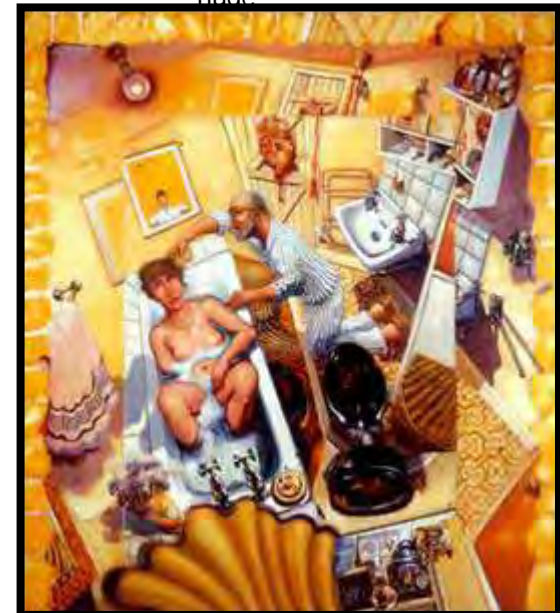
Gilbert & George Light Headed



GREEN, Anthony Red Lounge 1986-06



GREEN, Anthony Reclining Head looking at pink nude



GREEN, Anthony Yellow Bathroom Mole
End 1992



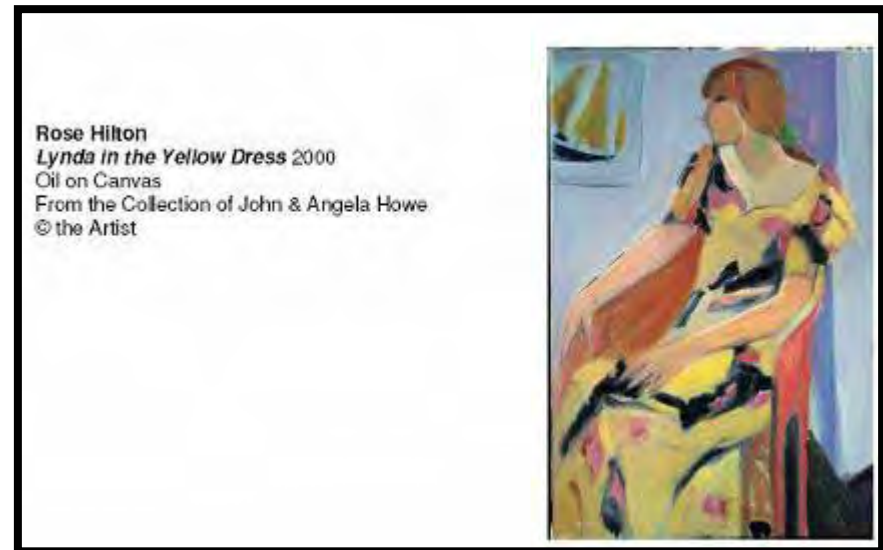
HARTOUM, Mona Measures of Distance 1988



Harvey, Marcus Maggie 2009



Harvey, Marcus Myra (Hindley)



Rose Hilton
Lynda in the Yellow Dress 2000
Oil on Canvas
From the Collection of John & Angela Howe
© the Artist

HILTON, Rose Lynda in the Yellow Dress 2000

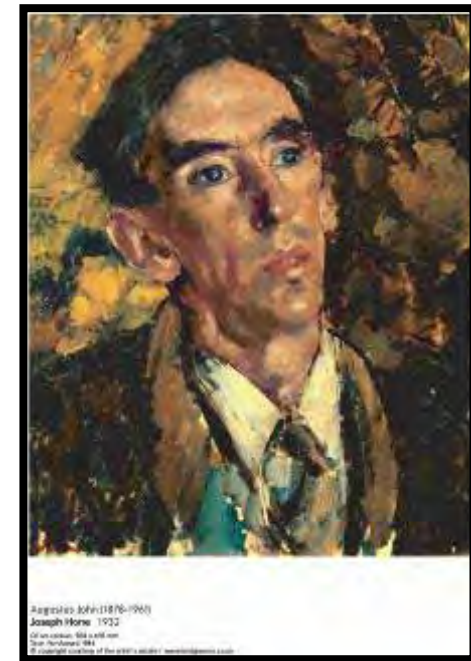


HOGARTH, William Heads of 6 of Hogarth's Servants 1750-5



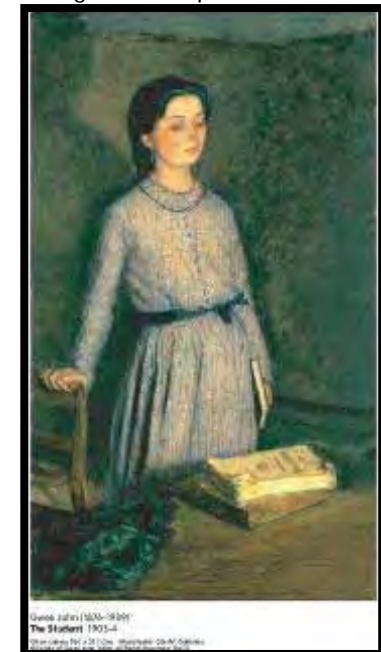
Augustus John (1878-1961)
Woman Smiling 1908-9
Oil on canvas, 1950 x 982 mm
The Trustees of the Augustus John Art Society, 1917

John, Augustus Woman Smiling 1908-9



Augustus John (1878-1961)
Joseph Hone 1932
Oil on canvas, 568 x 418 mm
The Trustees of the Augustus John Art Society, 1917

JOHN, Augustus Joseph Hone 1932



Augustus John (1878-1961)
The Student 1903-4
Oil on canvas, 762 x 518 mm
The Trustees of the Augustus John Art Society, 1917

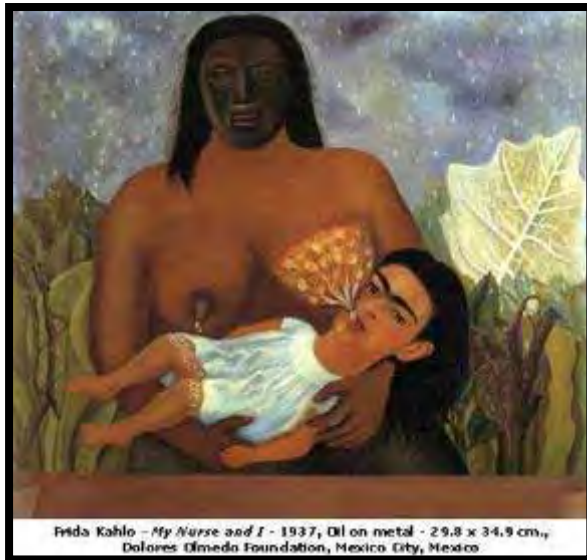
JOHN, Gwen The Student 1903



KAHLO, Frida Self Portrait on Border line 1932

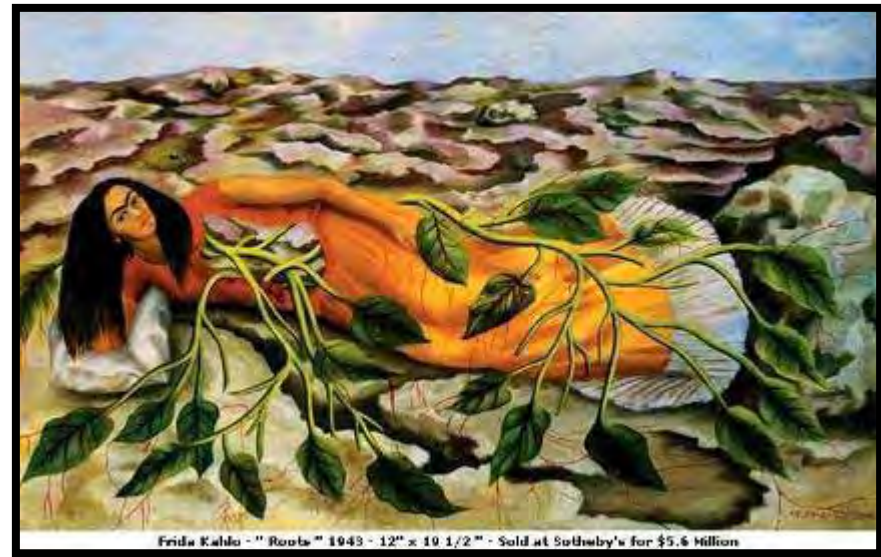


KAHLO, Frida My Birth 1932



Frida Kahlo - *My Nurse and I* - 1937, Oil on metal - 29.8 x 34.9 cm., Dolores Olmedo Foundation, Mexico City, Mexico

KAHLO, Frida My Nurse and I 1937

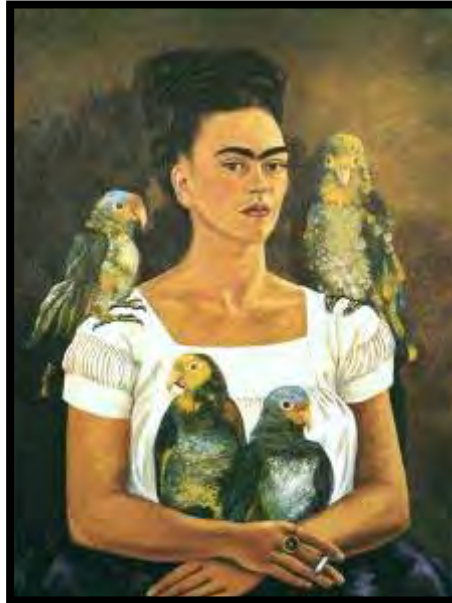


Frida Kahlo - "Roots" 1943 - 12" x 19 1/2" - Sold at Sotheby's for \$5.6 Million

KAHLO, Frida Roots 1943



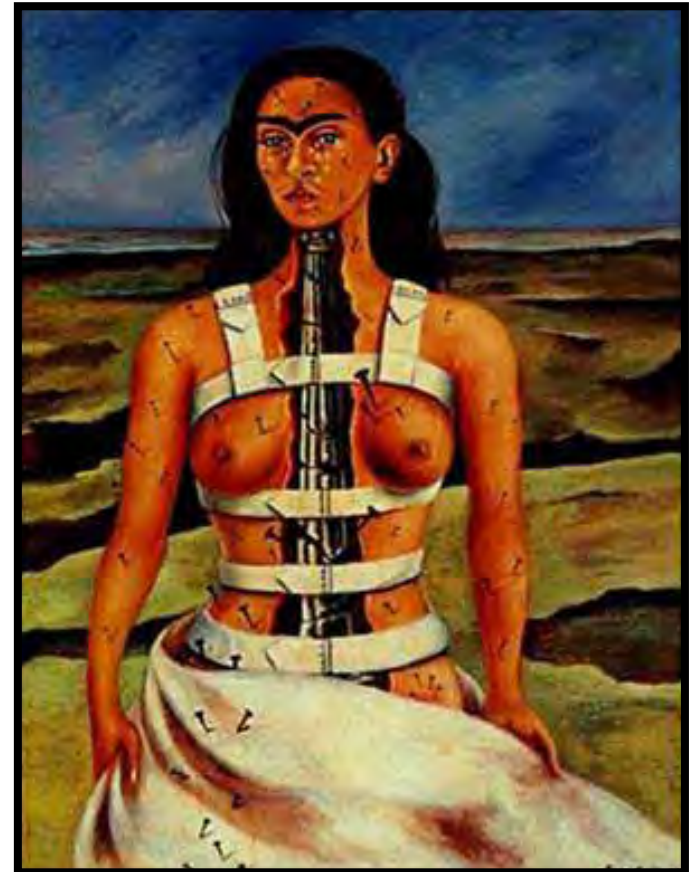
KAHLO, Frida Self Portrait with Cropped Hair 1940



KAHLO, Frida Self Portrait with Parrots



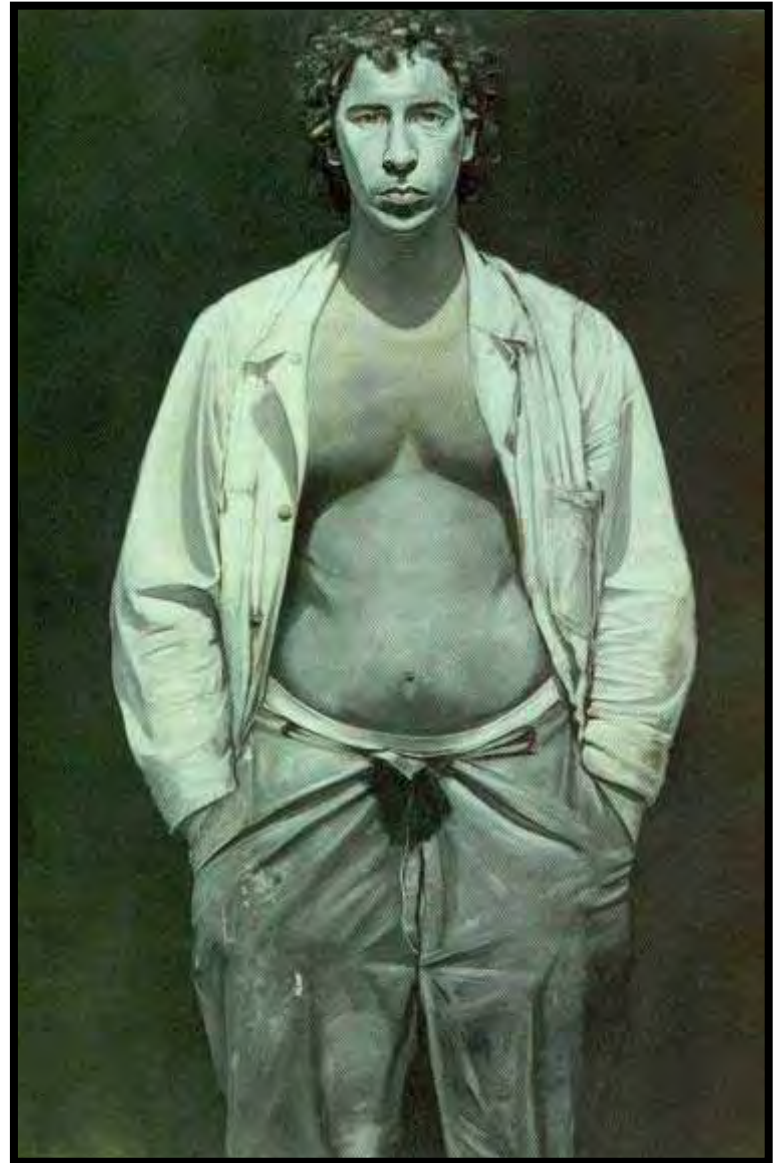
KAHLO, Frida Self Portrait with Monkeys 1943



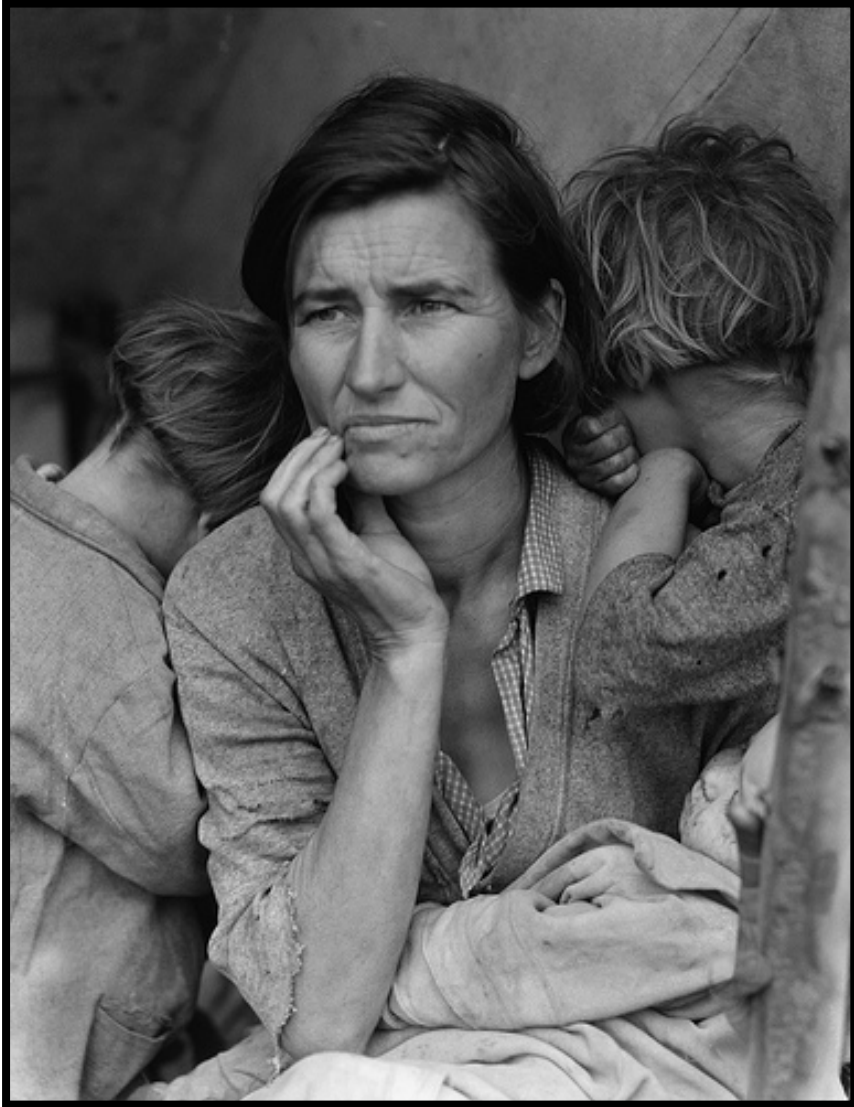
KAHLO, Frida



KINGSBURY, Allen Education 1993



Leslie Alfred Self Portrait 1966



LANGE, Dorothea Migrant Mother 1930s



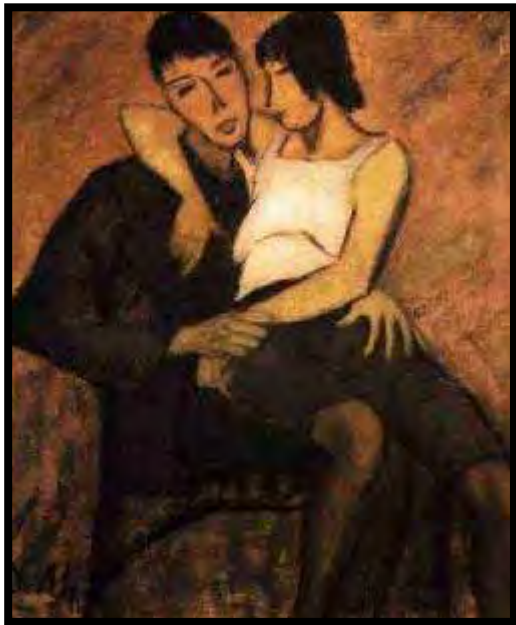
LANGE, Dorothea Migrant Cotton Worker 1940



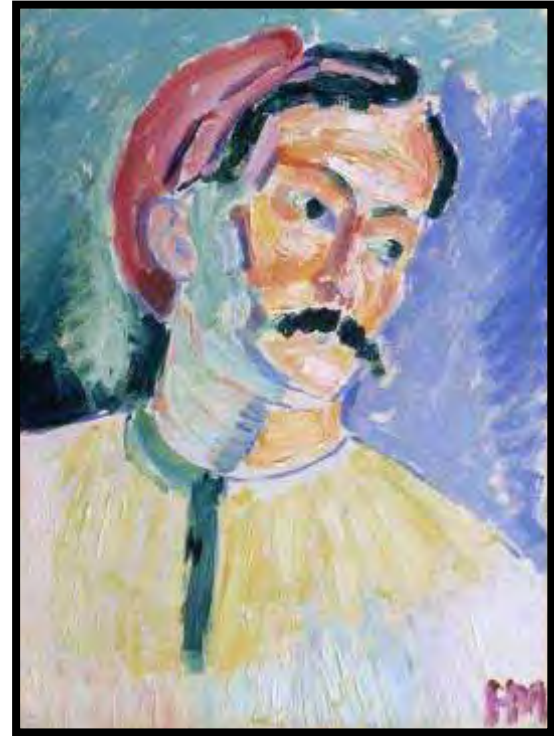
McCURRY, Steve Afghan Girl 1984 photo



Magritte, Rene Lovers



Mueller, Otto Urbanite Couple 1920



MATOSSE, Henri Andre Derain 1905



Parr Mike



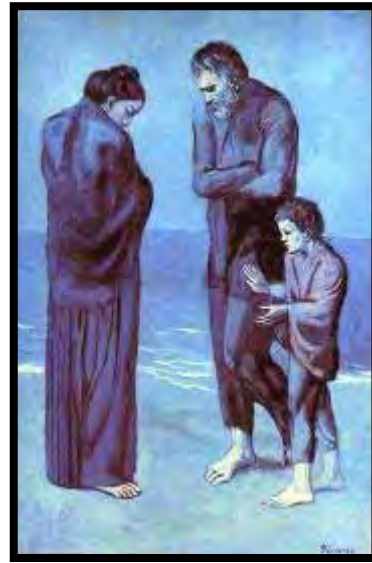
PENNA, Jimmy Gravity



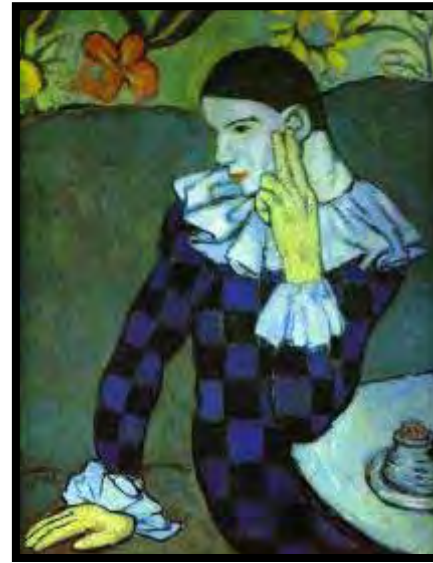
PENNA, Jimmy Under Deconstruction



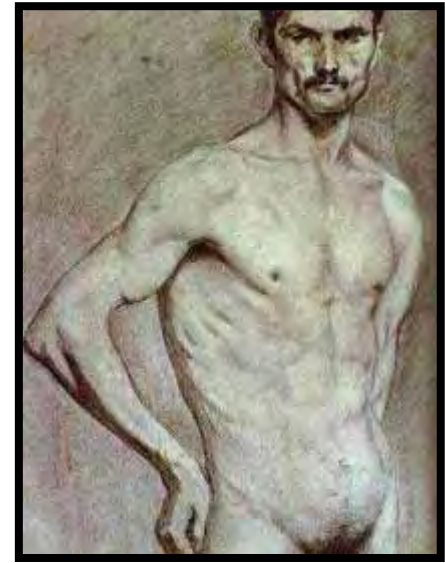
PICASSO, Pablo Gertrude Stein
1906



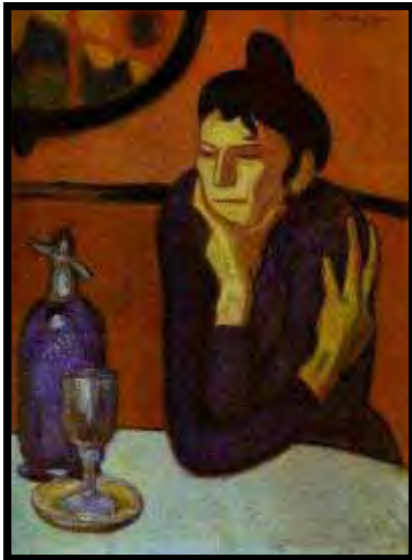
PICASSO, Pablo La Tragedie 1903



PICASSO, Pablo Leaning Harlequin 1901



PICASSO, Pablo Matador 1897



PICASSO, Pablo Absinth Drinker 1901



PICASSO, Pablo Self Portrait 1901



PICASSO, Pablo Self Portrait 1896



PICASSO, Pablo Weeping Woman 1937



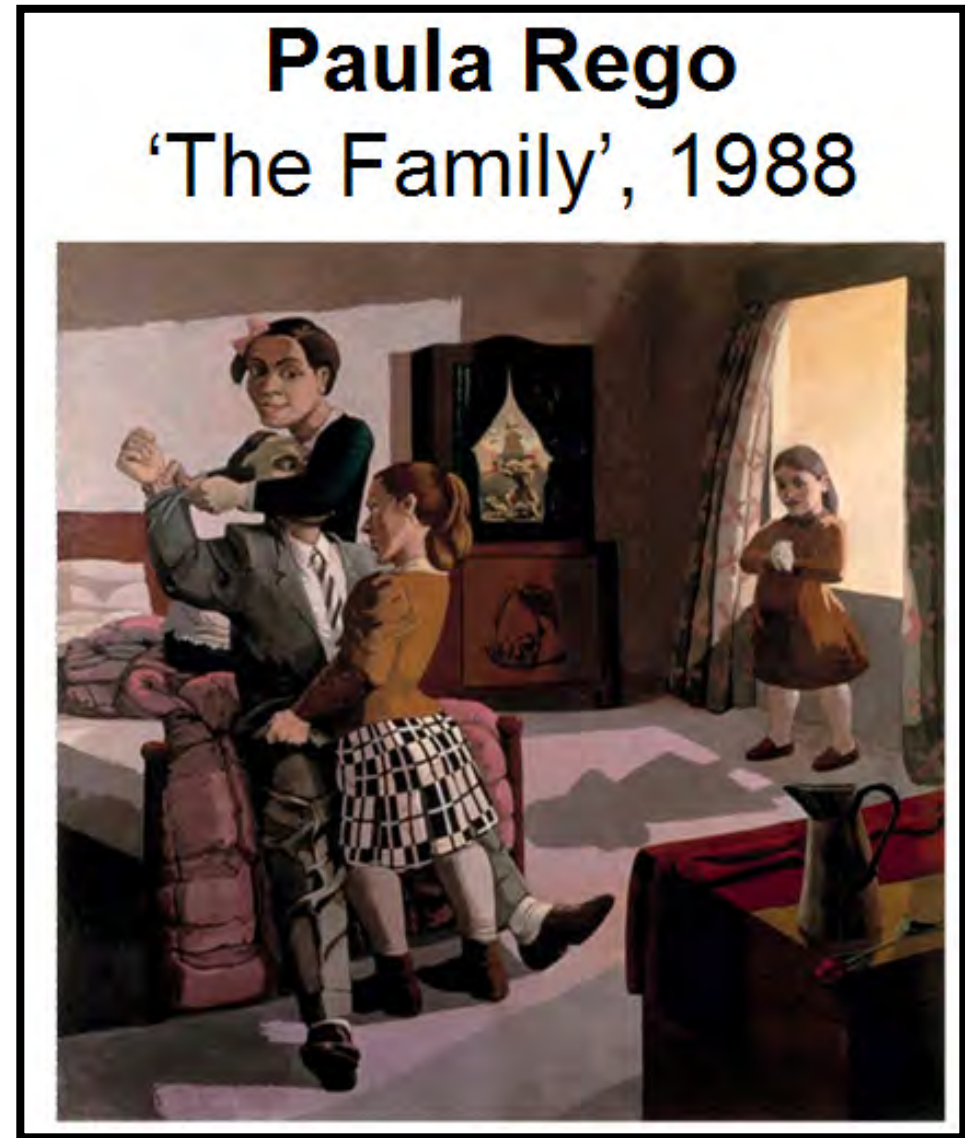
PICASSO, Pablo Science and Charity 1897



PICASSO, Pablo Spanish Couple 1900



Rego Paula Joseph's Dream 1990



Rego Paula The Family 1988



REMBRANDT Self Portrait 1650



REMBRANDT Self portrait 1629



REYNOLDS, Sir Joshua Self-Portrait as a Deaf Man



REMBRANDT Self portrait grouping with dates



SARGENT, John Singer Ena and Betty 1901



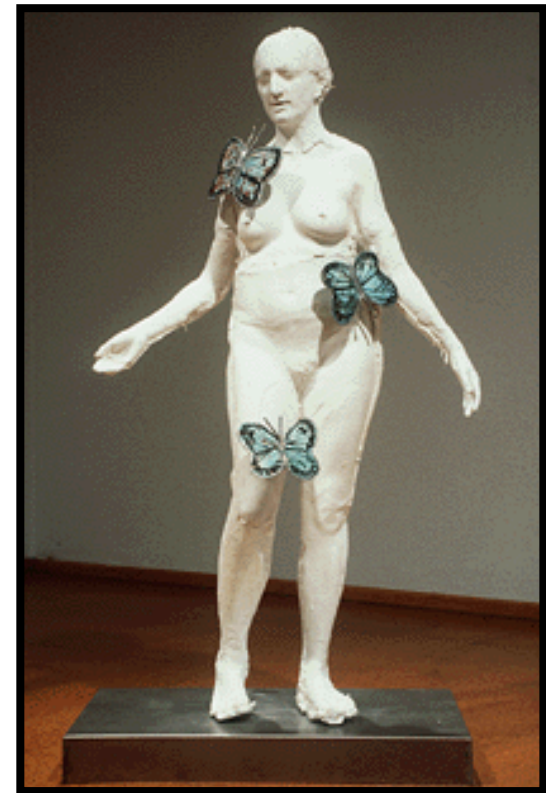
SHEMESH, Lorraine



SHERMAN, Cindy Untitled 1976



SMITH, Kiki Untitled 1992



Smith, Kiki Untitled (Butterfly) 1994



Soutine, Chaim Polish Woman 1922



Soutine, Chaim The Mad Woman
1919



STEINLEN, Theophile Three Women Working



STEVENS, Craig



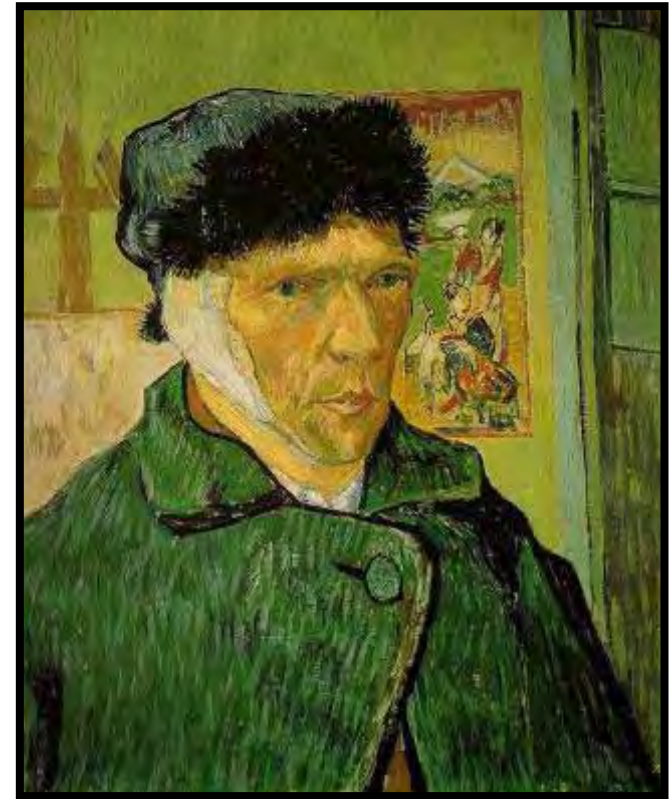
TOOKER, George



TOOKER, George Double Portrait



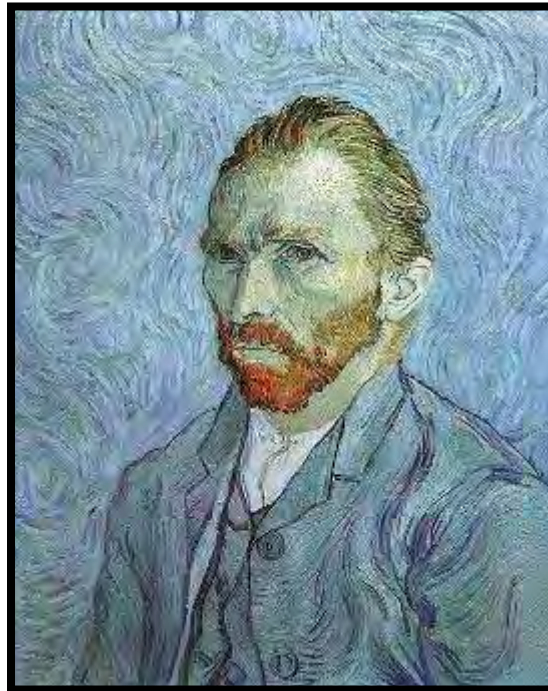
VALLOTTON, Felix The Paris Crowd 1892



Van Gogh Self Portrait with bandaged ear 1889



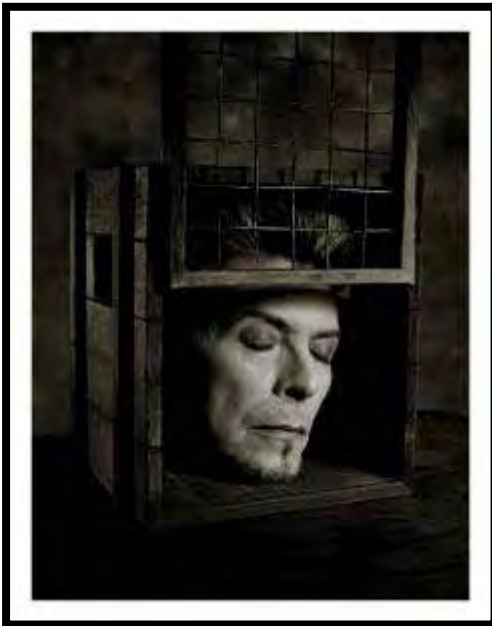
VELASQUEZ, Diego Surrender of Breda 1652



van Gogh Self portrait 1889



WATSON, Albert Kate Moss Marrakech 1993



WATSON, Albert David Bowie NY 1996



WATSON, Albert Christy Turlington NY 1990



WRIGHT, Liz The English Condition 1993

PORTRAIT SCULPTURE
MAINLY CONTEMPORARY
ALL MEDIA



Westgarth, Charles Troubled



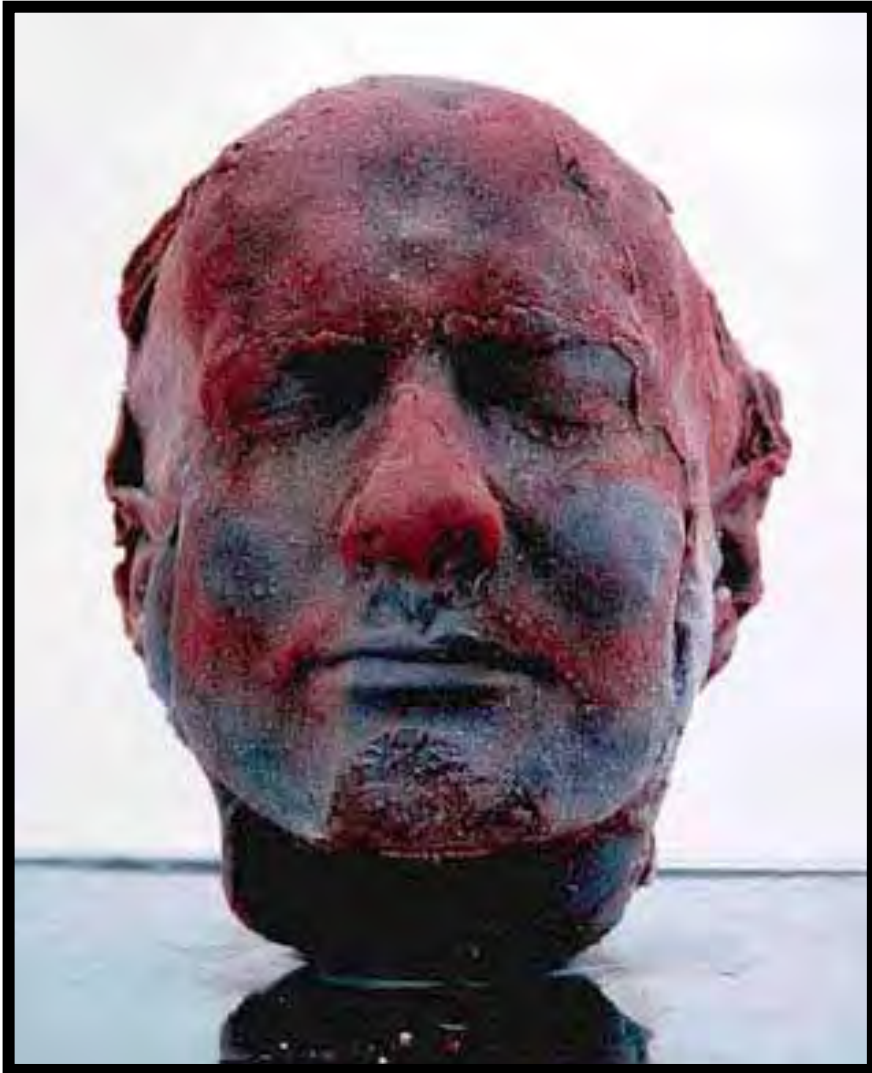
Algardi, Alessandro Portrait of Olimpia Pamphilj



Birks-Hays, Tony Female head



Hans Jean Arp - Cravates et tête ou Configuration au chef perdu, 1925 - 52x56x8 cm - Musée d'Art moderne et contemporain
© photo Musées de Strasbourg, Mathieu Bertola - © ADAGP Paris, 2008



Quinn, Marc Blood Head 1991



Brancusi, Constantin Danaide c1918



Brancusi, Constantin Mademoiselle Pogany 1912



Brancusi, Constantin Muse 1912



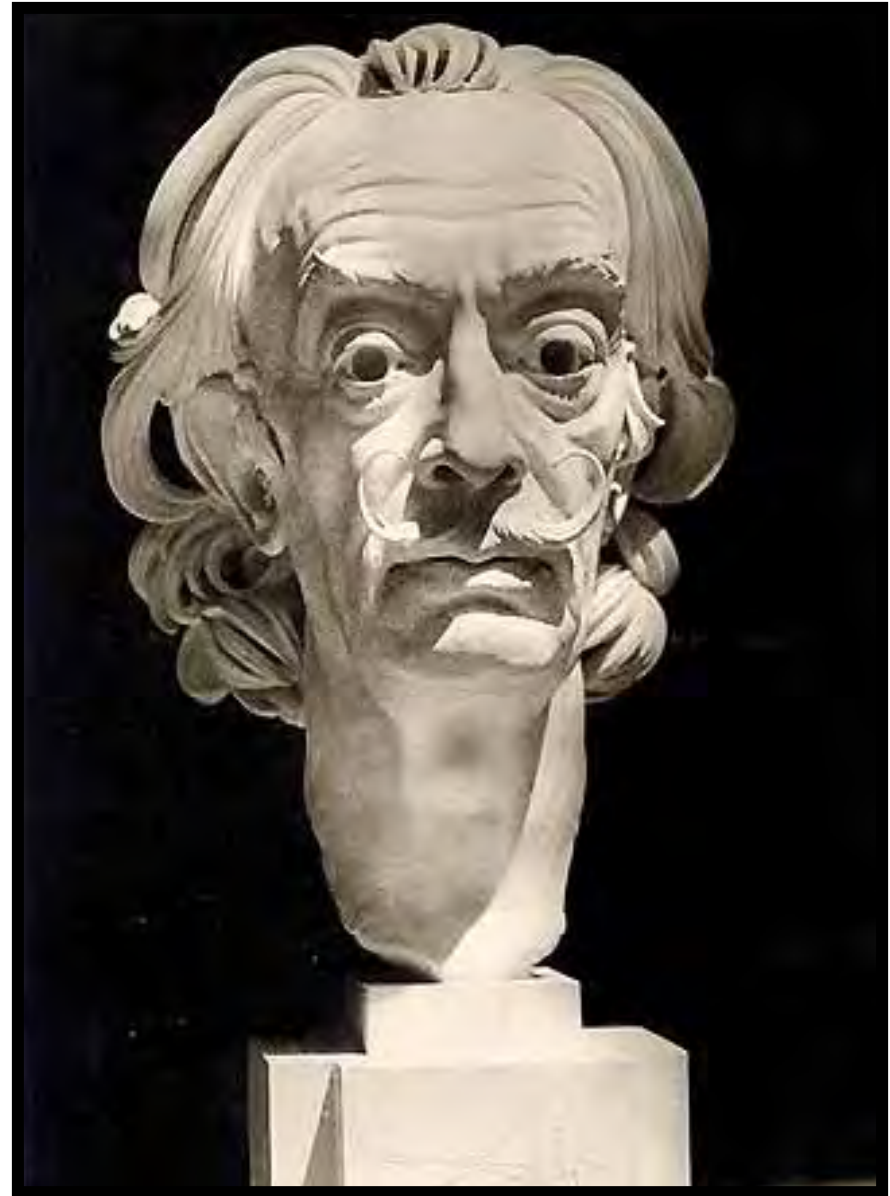
Brancusi, Constantin Sleeping Muse 1909



Brancusi



Breker, Arno Adolf Hitler



Breker, Arno Salvador Dali



Cantor, Yanka Reverie



Collins, Charles Capucines boulevard 2006



Donatello St Rossore 1425



Epstein, Jacob Deirdre



Epstein, Jacob Elsa Lanchester 1924



Epstein, Jacob Euphemia Lamb 1908



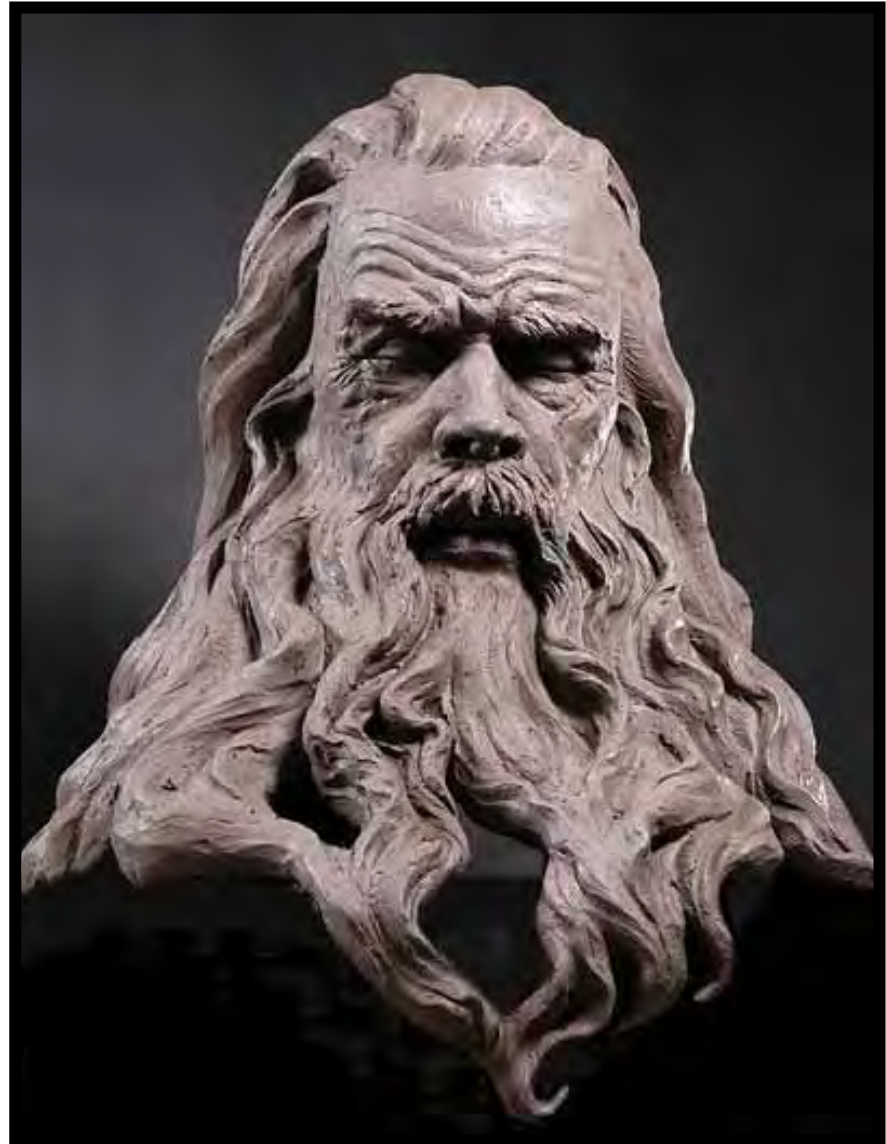
Epstein, Jacob Portrait of Albert Einstein 1933



Fautrier, Jean Large Tragic Head 1942



Faraut, Philippe Darkages 2005



Faraut Philippe Dormancy 2006



Flack, Audrey Head of Civitas 1993



Flowers R Bruce Brotherly Love



Frink, Elizabeth head



Frink



Helmick, Ralph Self Portrait (wood)



Hicks, Nicola flora 2002



Henry, Sean Night & Day 2008



Henry, Sean And she said yes 1988



Hosmer, Harriet Daphne



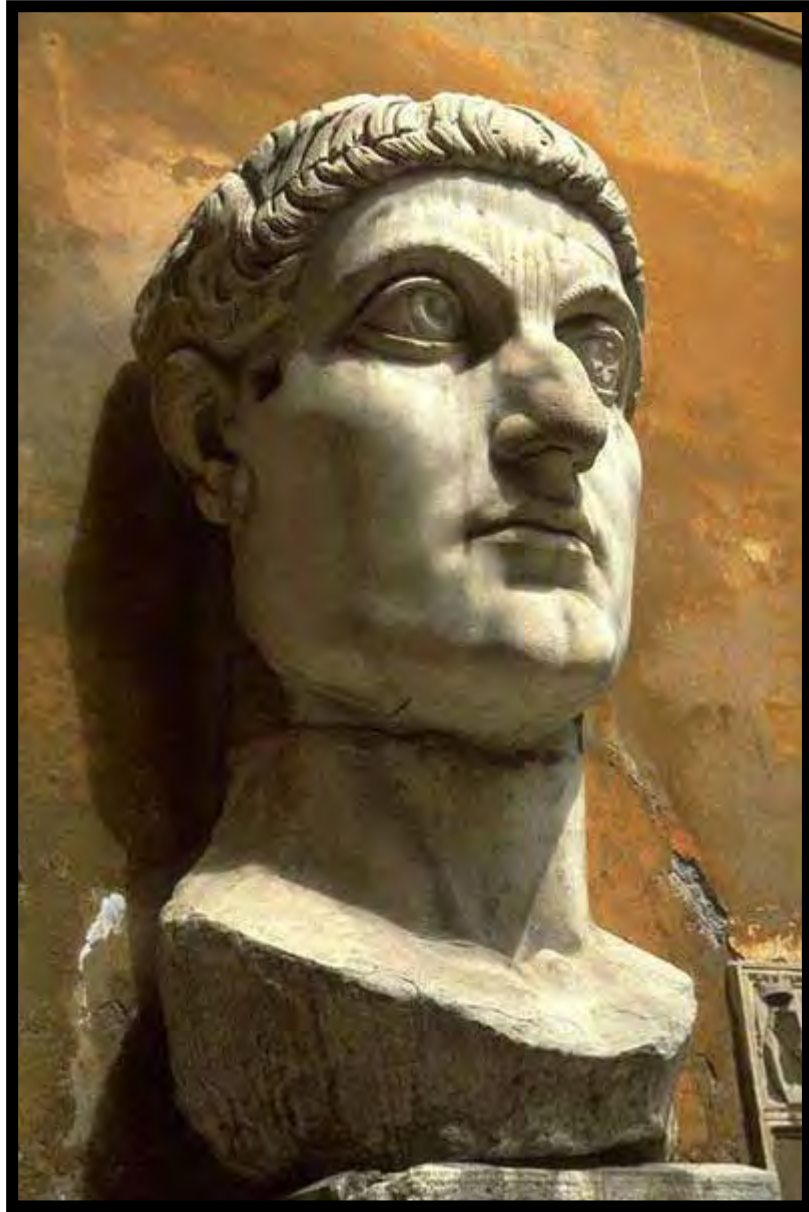
Houdon, Jean-Antoine St Bruno



Kalinauskas Juozas Linute 1984



Ketchum, Blake Richie 2008



Late Roman c313 Constantine the Great



Lindenaauer, Jinx Face off (stone)



Modigliani, Amadeo Head 1915



Modigliiani, Amadeo Head of a Woman 1910



Moore, Henry Mask 1928



Paolozzi Sir Eduardo Michelangelos David 1987



Mueck, Ron The Bed



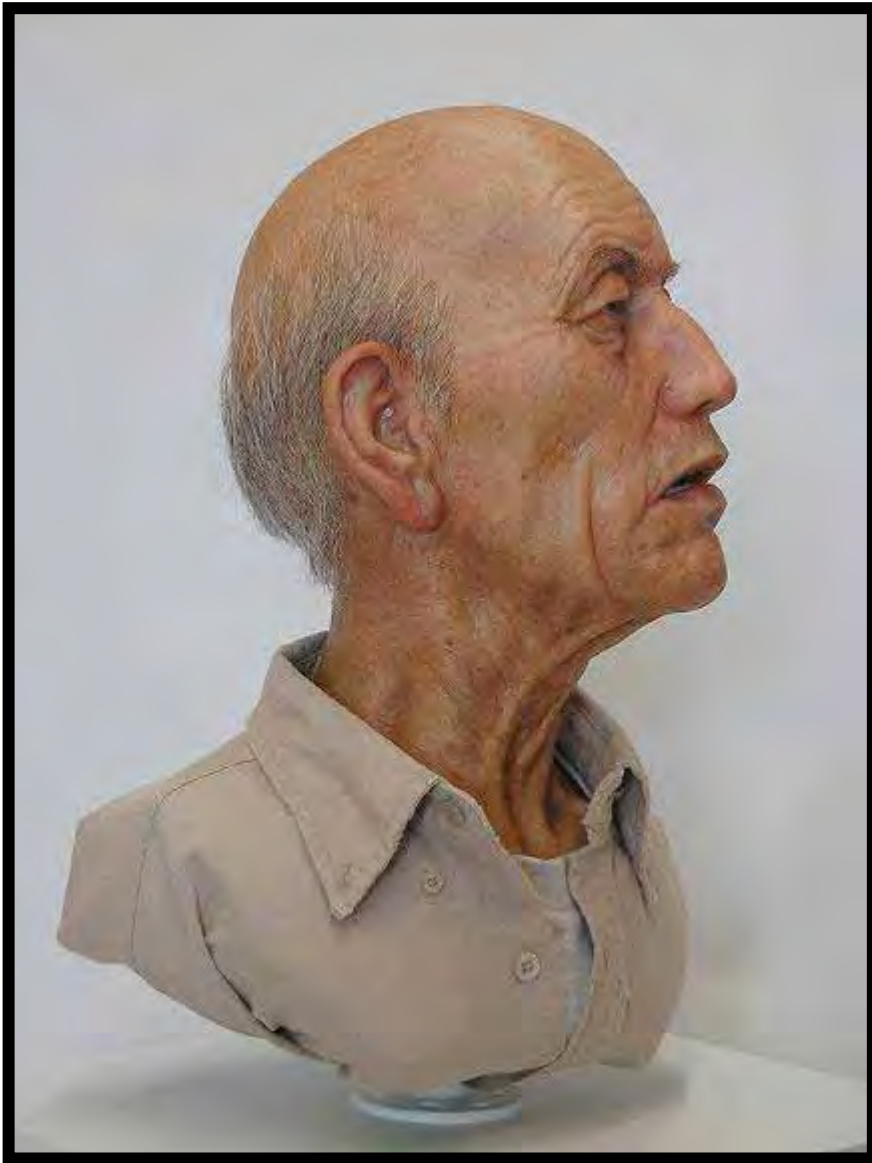
Mueck, Ron Mask II



Rodin, Auguste La France 1904



Rodin, Auguste Thomas Fortune Ryan 1909



Salmon, Jamie Elder3



Salmon, Jamie Fragment 2 2005



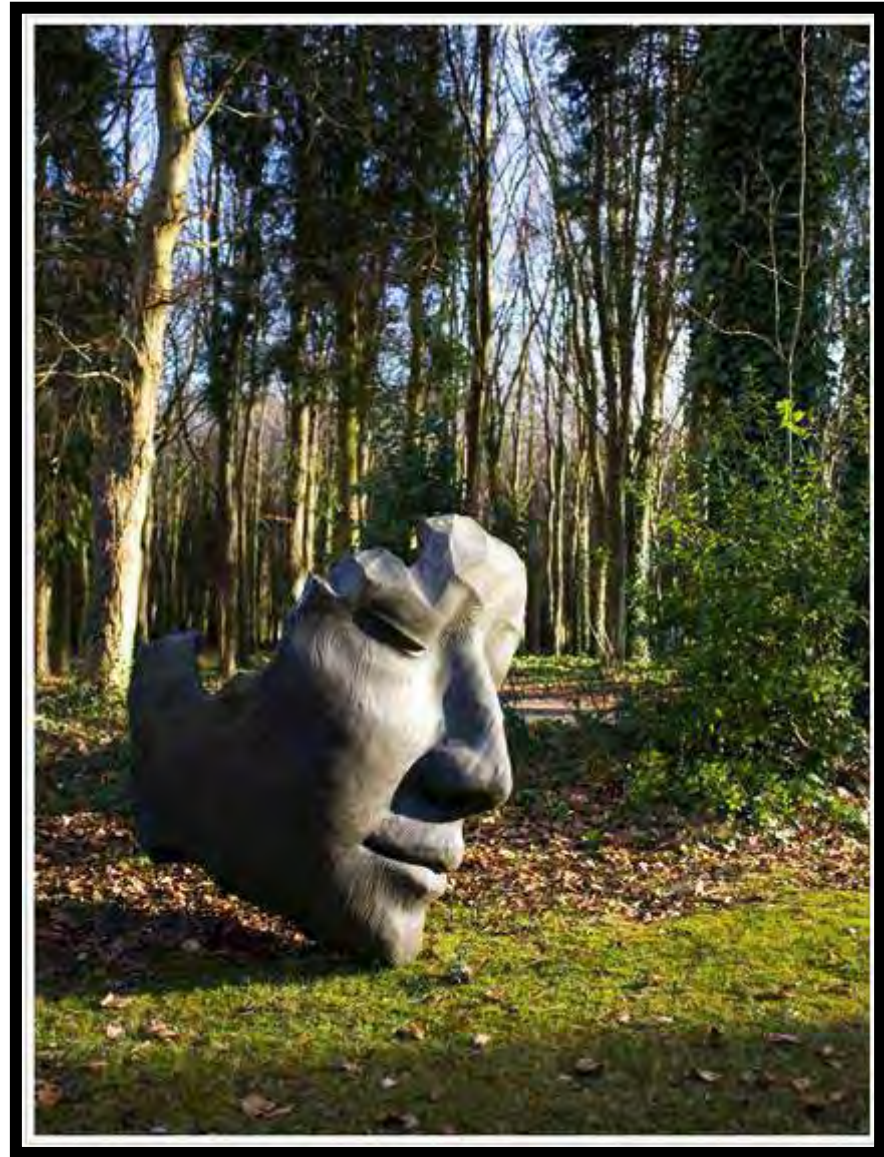
Salmon, Jamie Self Portrait 2006



Salmon, Janie Donald Pleasance 2005



Sutton Hoo mask Anglo Saxon



Sutton, Jilly Fallen Deodar 2009 Goodwood Sculpture Park



Weiss, Sally Jealousy



Weiss, Sally Portrait of a lady



Westgarth, Charles Newborn



Giacometti, Alberto Lotar I 1965

PHOTOGRAPHIC PORTRAITURE



Riboud Marc painter Tour eiffel, 1953



Burgess Catherine Beauty & Beast



Eastwood Stephen 1 2006



Eastwood Stephen 3 2005



Eastwood Stephen 3 2006



Eastwood Stephen 4 2003



Eastwood Stephen 4 2005



Eastwood Stephen 5 2006



Eastwood Stephen 6 2004



Eastwood Stephen 6 2005



Eastwood Stephen 7 2001



Eastwood Stephen 2006



Eastwood Stephen angelina1



Eastwood Stephen ash 2003



Eastwood Stephen gisele 2004



Eastwood Stephen kent 2002



Eastwood Stephen



Eastwood Stephenalex 2004



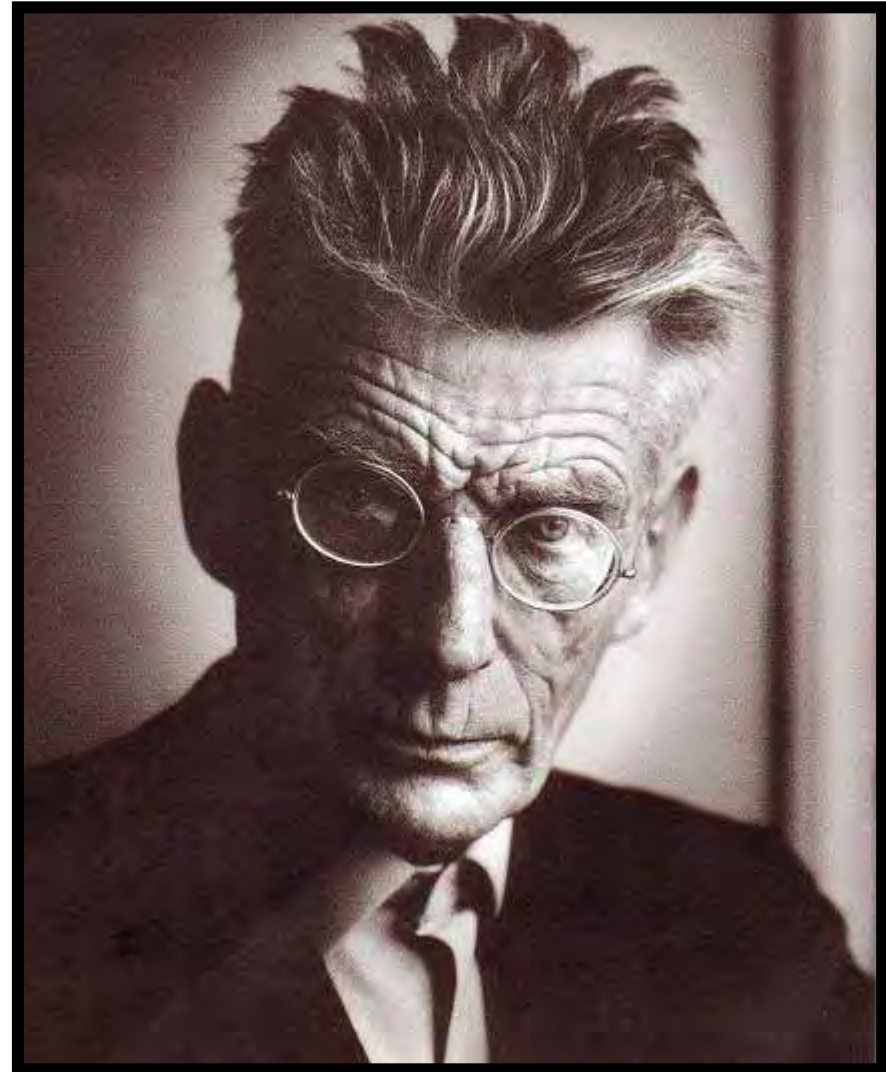
Evans_Agee_AllieMae



brassai



hockney_mother



Ozkok Lutfi Samuel Beckett 1966



Rainer Arnuf Angst 1971



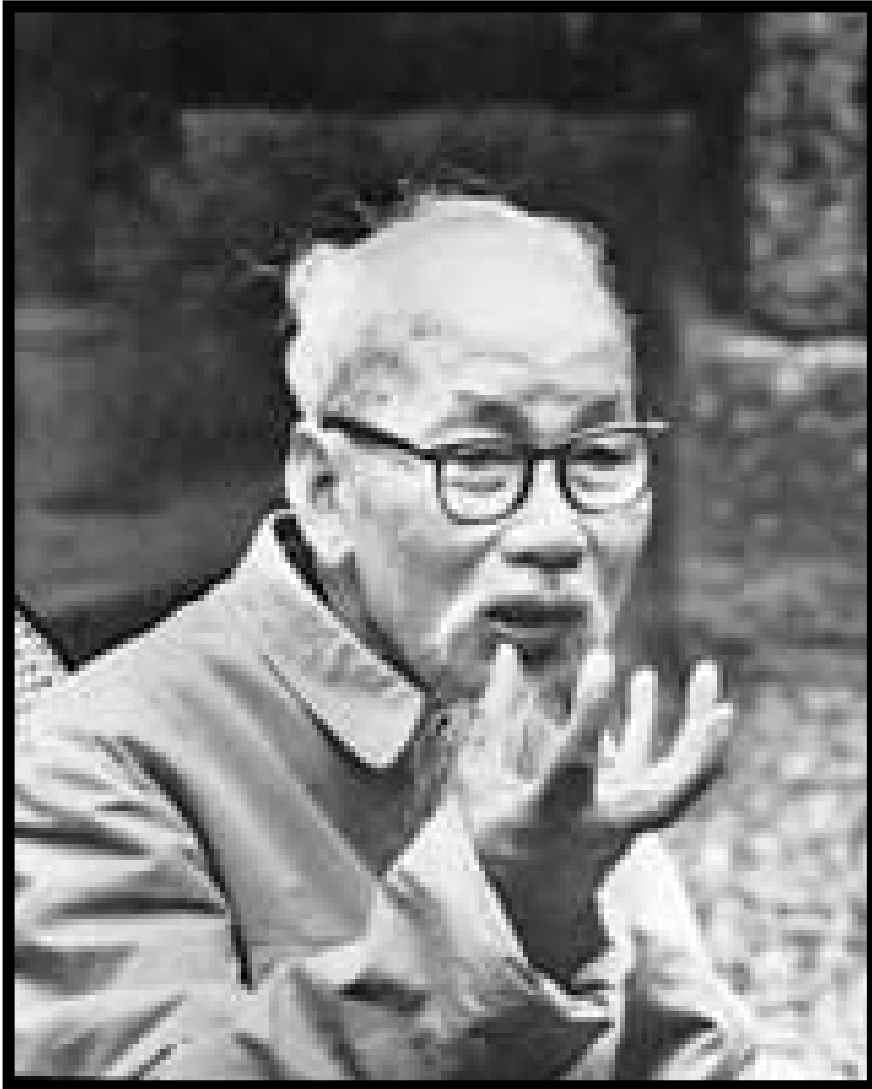
Rainer Arnulf



rainer arnulf cadaveri 1978



Ribaud Marc Liverpool 1954



Ribaud March Ho Chi Minh

- Portraits / self portraits
- Friends
- Body language
- Family
- Facial expressions



Leon Kossoff



Pablo Picasso



Giacometti



Peter Blake



Henry Moore



Pierre-Auguste Renoir



Paul Gauguin



Carel Weight



Jan Vermeer



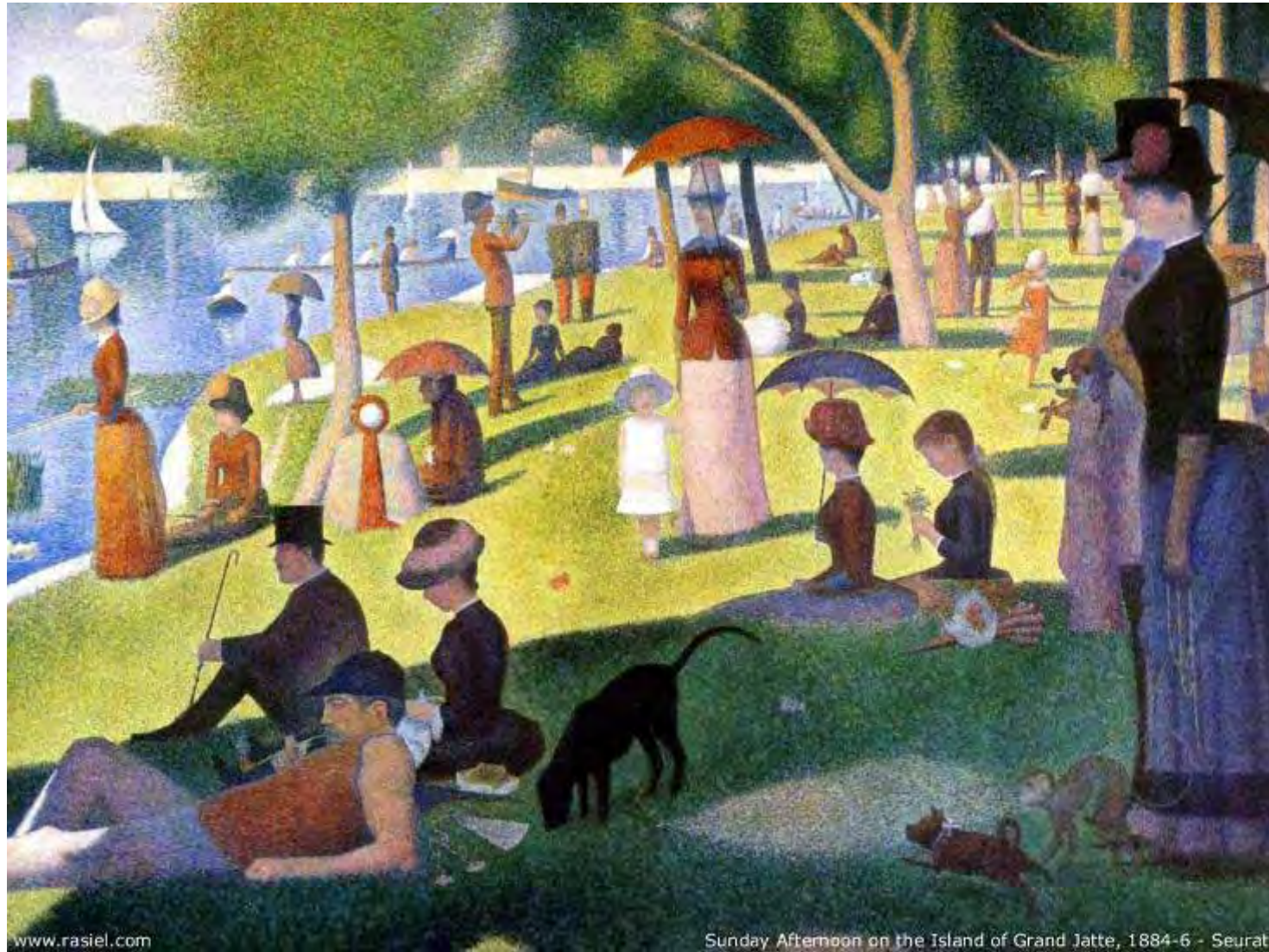
Edward Burra



Henri Rousseau

Bill Brandt





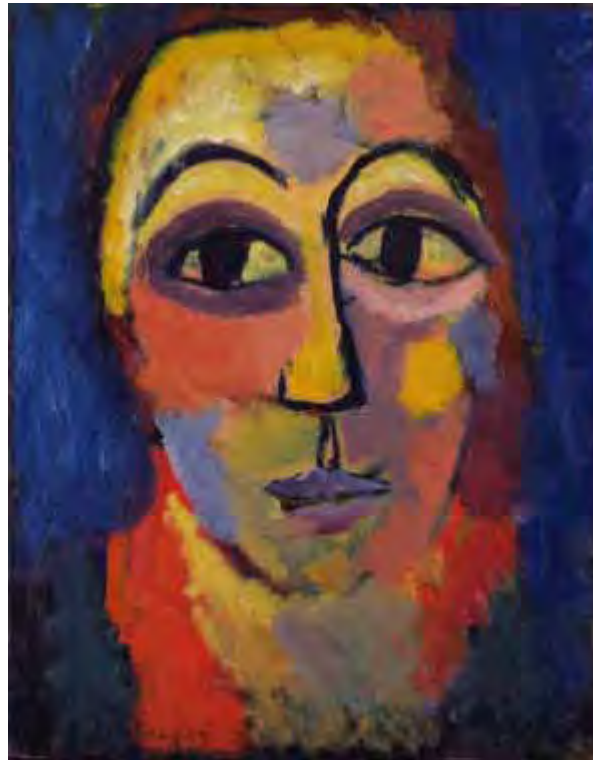
www.rasiel.com

Sunday Afternoon on the Island of Grand Jatte, 1884-6 - Seurat

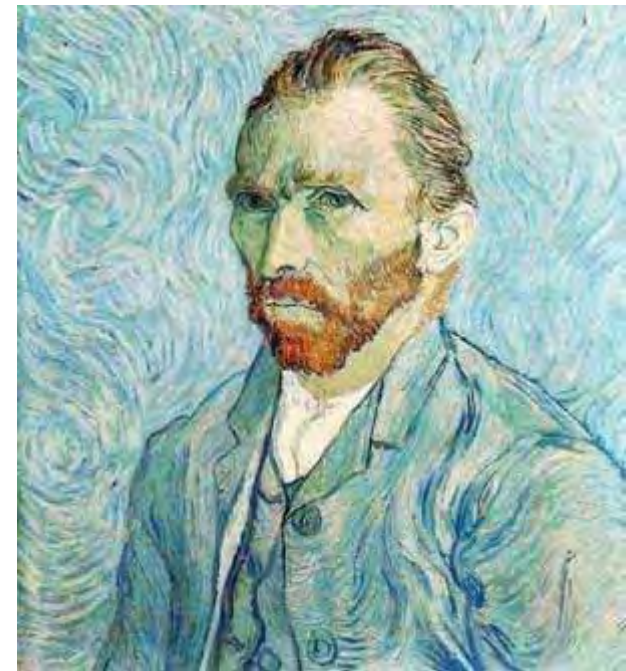
Georges Seurat

Hopes, Fears and Memories

- Expression
- Dreams
- Fantasies
- Likes
- Dislikes
- Ambitions



Jawlensky



Van Gogh

SURREALISM

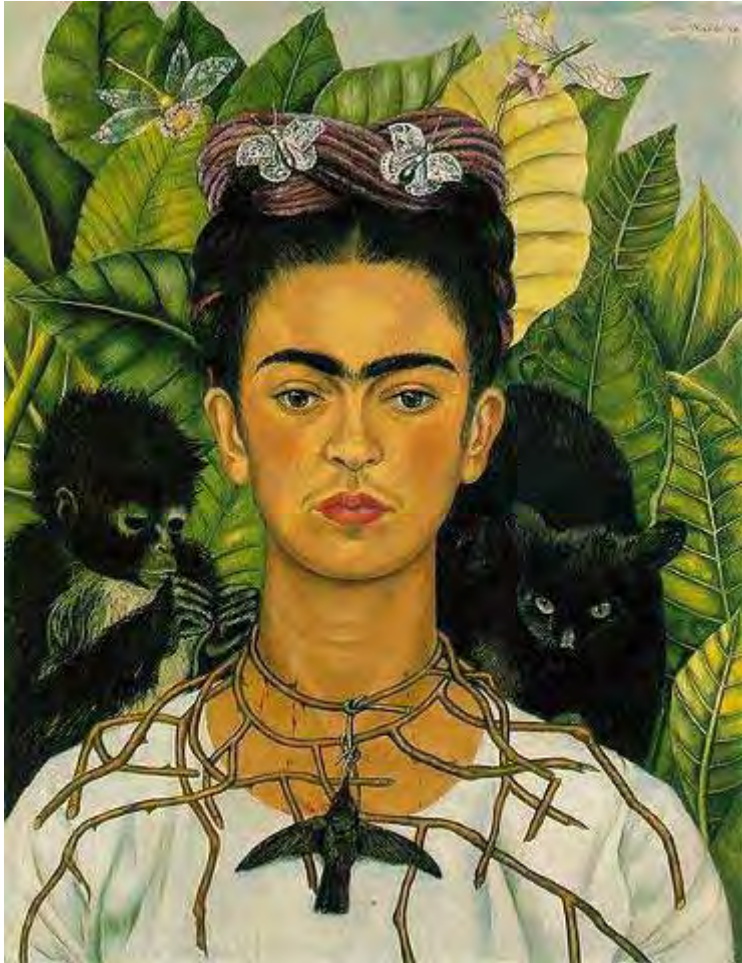


Portrait of Dali by
Phillipe Halsman



Painting
by Dali

Frida Kahlo



Self-portrait. 1996. Oil on canvas



Chuck Close

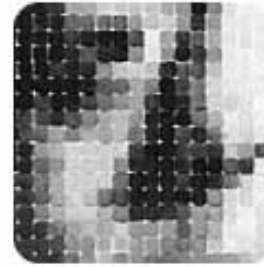
Chuck Close and Photo-Realism

- Large scale portraits
- Family and friends
- Uses **Graphs** to enlarge Photographs
- Six figure paintings



Chuck Close Frank. 1969 Oil on canvas

Chuck Close Early Work

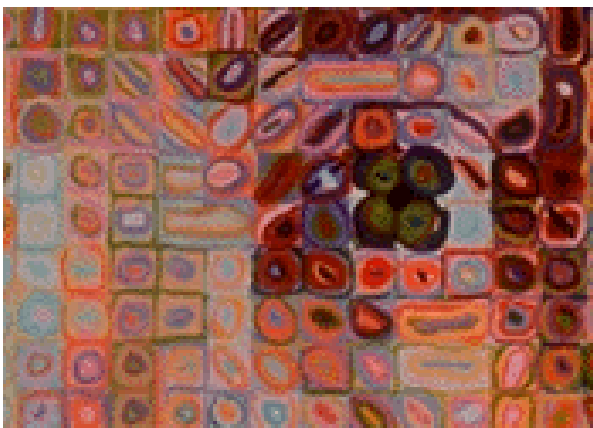


*Chuck Close Phil Watercolor. 1977,
Watercolor on paper*



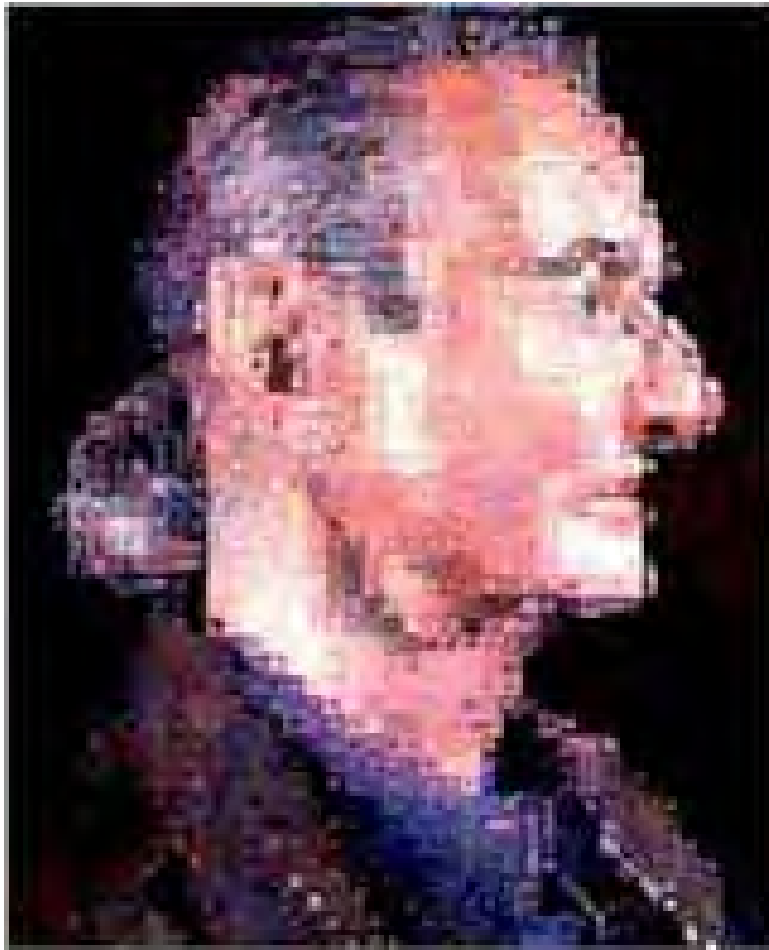
Chuck Close Phil.1969 Acrylic on canvas, 108 x 84"

Chuck Close



Kiki, 1968. Acrylic on canvas. 107 1/2 x 83 1/2"

Chuck Close



Roy II, 1994 .Oil on canvas



Judy, 1989-90. Oil on canvas.



Andy Warhol



Portraits in Art

The history of portraits

- Historically portraits were made just as we take photographs today.
- Before the invention of photography in the 19th century painting was the only way to get a colour picture.
- Only the rich could afford painted pictures so most early portraiture was of wealthy patrons.
- Only rich artists could afford to spend the time doing self portraits



Italian Renaissance artist **Domenico Ghirlandaio** ran a popular and successful workshop in Florence, painting many frescos and portraits. As well as religious themes, he often depicted scenes of everyday Florentine life. *Old Man with His Grandson* was painted in **1480** and is now in the Musée du Louvre, Paris.



Leonardo da Vinci

**'Mona Lisa'
1503- 1506**

Leonardo da Vinci was known not only as a masterful painter but as an architect, sculptor, engineer, and scientist. His pursuit of knowledge was relentless and his discoveries left lasting changes in the fields of art and science. With his sophisticated skills and love for learning, Leonardo was the quintessential renaissance man.



Portrait of Pope
Innocent X (1649-1650)
Diego Velázquez (1599-
1660)

In its vigorous brushwork and concern for psychological characterization, Velázquez's work reflects the sensibilities of the Baroque era.



Titian
'Portrait of Doge Andrea
Gritti'
1544-45

From the 1530s, working under royal and aristocratic patronage, Titian produced portraits that are images of command rather than explorations of personality.



Dutch painter **Judith Leyster**, a pupil of Frans Hals, painted many portraits, still-life subjects, and *genre* scenes. The relaxed poses and expressive brushwork seen in *Laughing Children with a Cat* (1629) clearly show the influence of Hals.



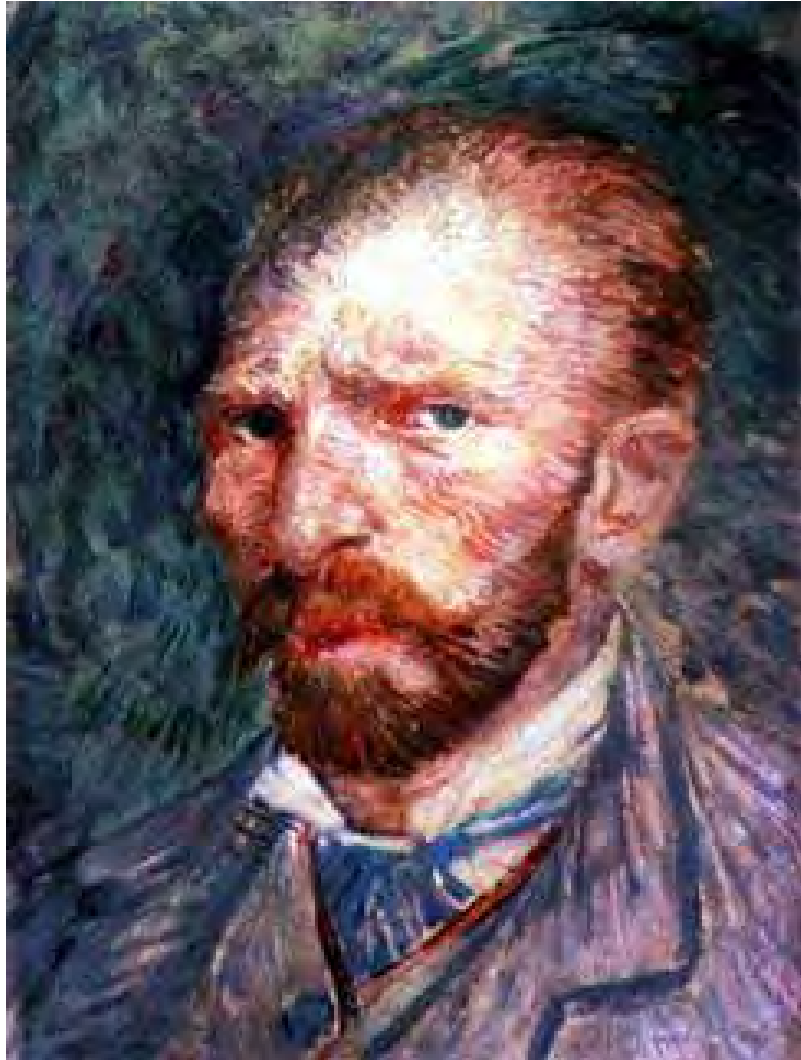
Rembrandt van Rijn
Self Portrait
1660

Rembrandt painted a large number of self-portraits throughout his life; the later ones in particular are noted for their psychological depth and the artist's technical skill in the use of chiaroscuro.



Rembrandt van Rijn
Self Portrait
1669

This one (National Gallery, London) was painted in 1669, the last year of his life.



The burning eyes of this **Self Portrait** by **Vincent van Gogh (1853-1890)** exemplify the way the artist attempted to capture the human essence and emotions of his subjects. During the last years of his life, van Gogh painted a number of self-portraits. The expressive brushstrokes and vibrant colours in these paintings are typical of his later style.



Austrian Expressionist painter Oskar Kokoschka is known for his psychologically perceptive portraits and colourful landscapes. *Self-Portrait* (1913)

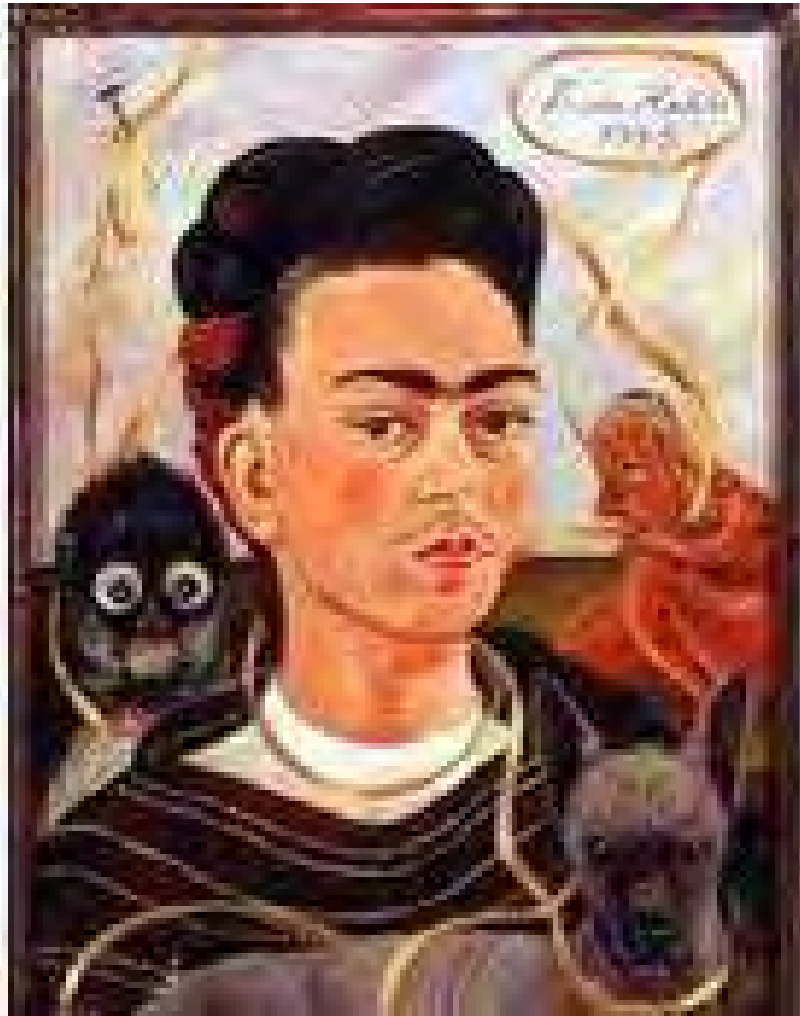


Amedeo Modigliani

associated with artists living and working in Paris, yet his work shows little connection with the major art movements of his time.

Modigliani developed an individualistic style in which subjects are depicted with sinuous lines, flat forms, and elongated proportions.

These elements combined to produce the almost classical effect seen in his figure studies and portraits, such as in *Madame Zborowska* (1918) .



Frida Kahlo is best known for her very personal self-portraits. In these works she depicts herself impassively staring at the viewer, often surrounded by references to the painful circumstances of her life. Kahlo also celebrated her Mexican identity in her artwork by using a painting style based on native popular art and by incorporating representations of Mexican flora and fauna as well as references to the Pre-Columbian civilizations of Mexico, as seen here in *Self-Portrait with Monkey* (1940).

PICASSO'S PORTRAITS AND PEOPLE



Self Portrait 1896

Pablo Picasso
1881-1973



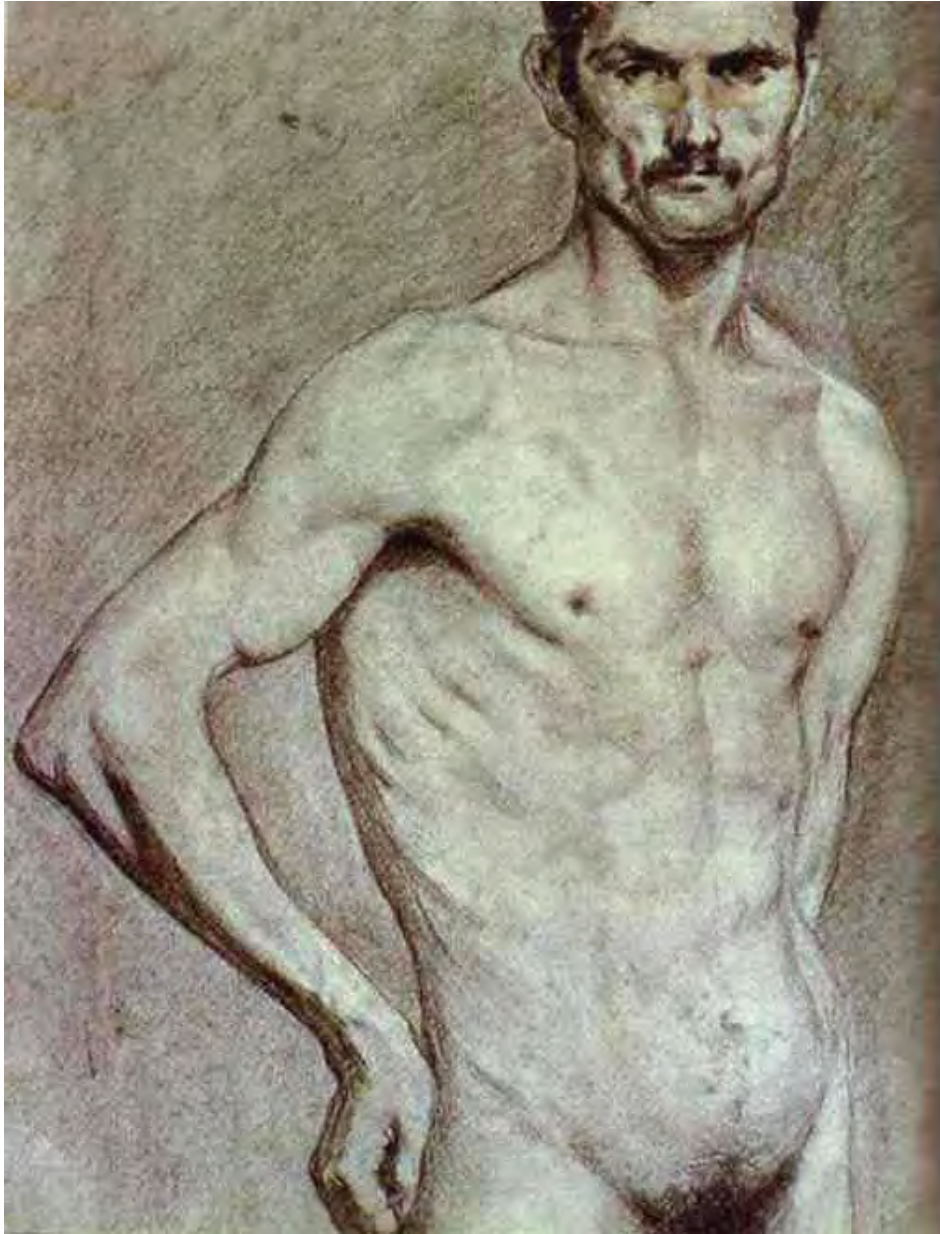
First
Communion
1895-96

Pablo Picasso
1881-1973

Science and Charity (1897)



Pablo Picasso (1881-1973)



Matador 1897

Pablo Picasso
1881-1973

Death of Casamangas 1901



Pablo Picasso (1881-1973)



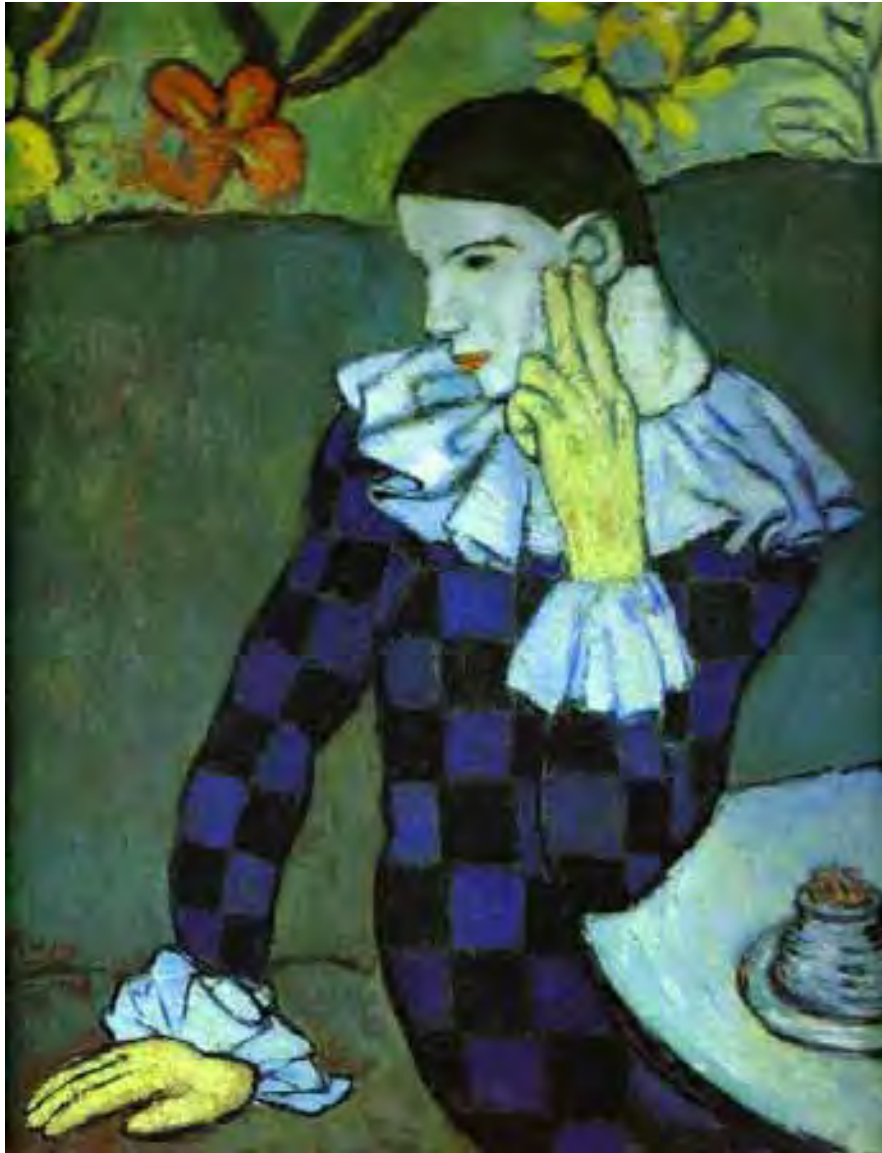
Lola (1899)

Pablo Picasso
1881-1973

A Spanish Couple (1900)



Pablo Picasso (1881-1973)



Leaning
Harlequin
1901

Pablo Picasso
1881-1973



Woman with
Chignon
(1901)

Pablo Picasso
1881-1973



The Absinthe Drinker (1901)

Pablo Picasso
1881-1973



The Absinthe Drinker (1901)

Pablo Picasso
1881-1973



L' Absinthe (1901)

Pablo Picasso
1881-1973



Self Portrait 1901

Pablo Picasso
1881-1973



La Vie (1903)

Pablo Picasso
1881-1973



La Tragedie 1903

Pablo Picasso
1881-1973



The Old Guitarist (1903)

Pablo Picasso
1881-1973



Self Portrait 1906

Pablo Picasso
1881-1973



Harlequin Sitting on a Red Couch (1905)

Pablo Picasso
1881-1973



Lapin Agile (1905)

Pablo Picasso
1881-1973

Family of Saltimbanques (1905)



Pablo Picasso (1881-1973)



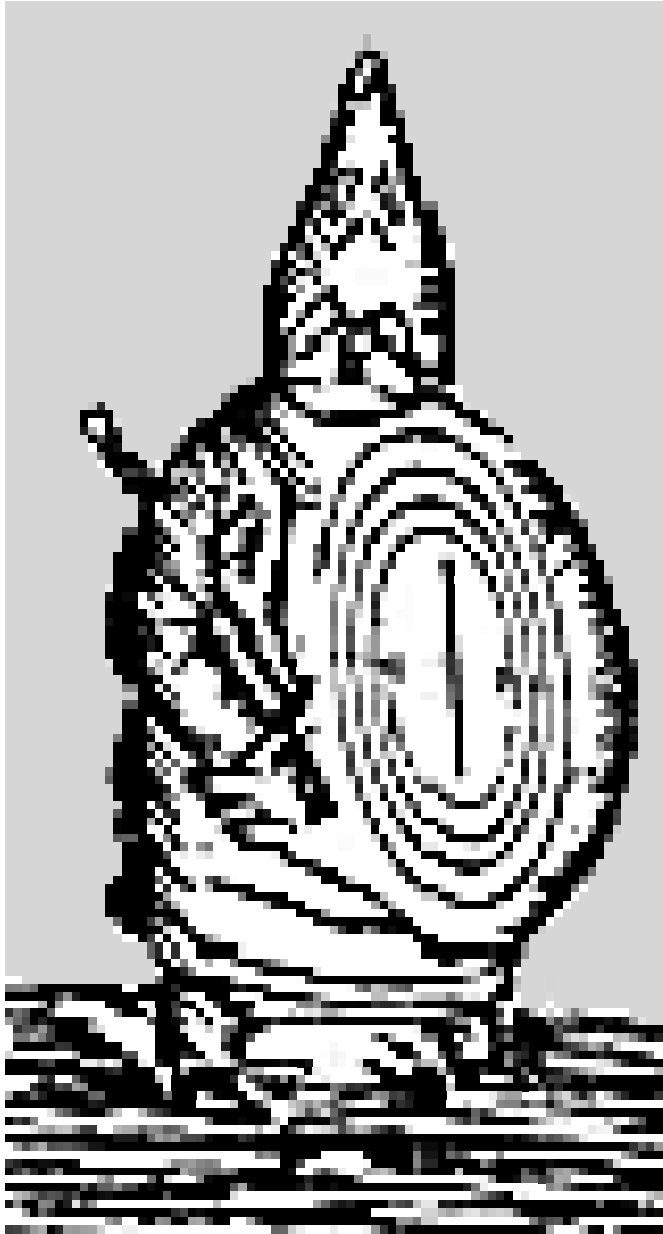
Gertrude Stein
1906

Pablo Picasso
1881-1973



Alfred Jarry

Pablo Picasso
1881-1973



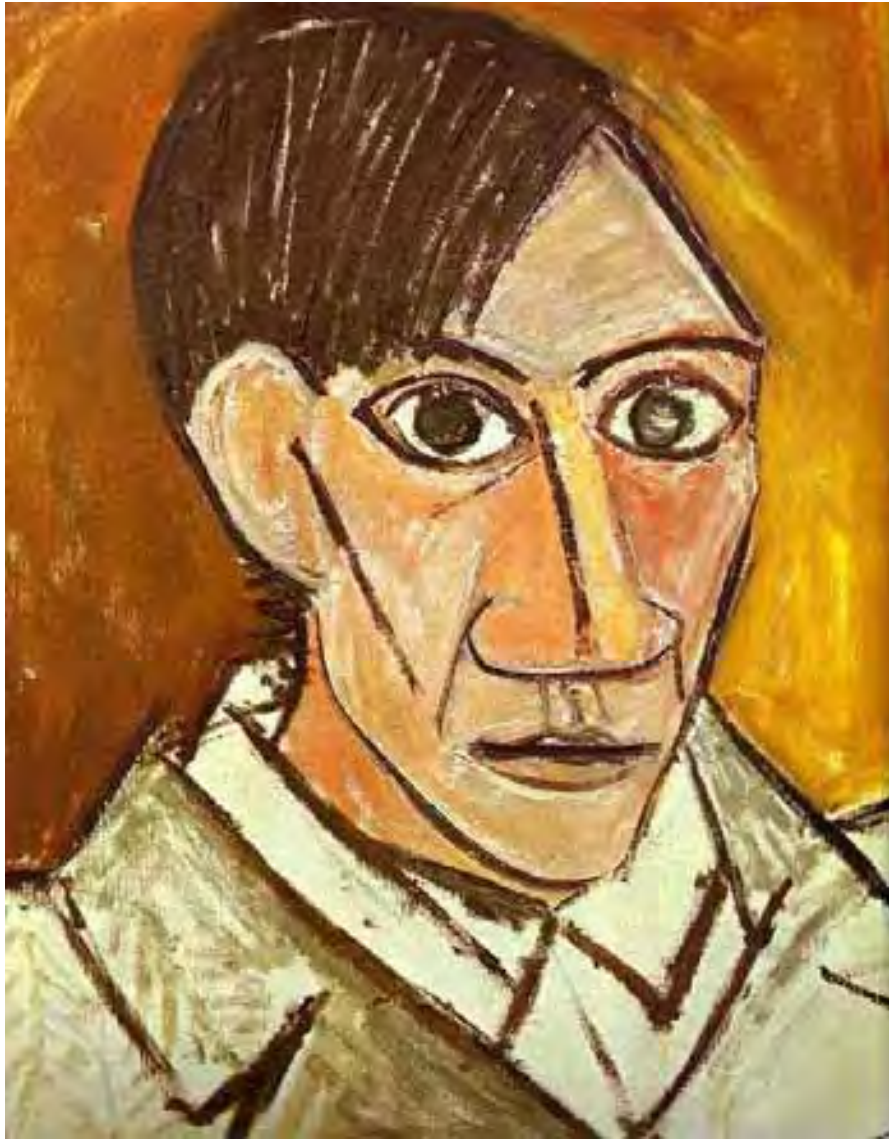
Ubu Roi (1896)

Alfred Jarry
1873 - _

Sketch (1907)



Pablo Picasso (1881-1973)



Self Portrait 1907

Pablo Picasso
1881-1973

Demoiselles d'Avignon (1907)



Pablo Picasso (1881-1973)

Antony Gormley



SCULPTOR





Bread Works Bed 1981 *Bread Works* 28 x 220 x 168 cm

BREAD WORKS(1979 - 1982)



DOUBLE BODY CASE
WORKS (1987 - 1989)

Double Bodycase Works in Lead and Cast Iron Mind and Body1986/89 *Lead/livre/glass/plaster/air*199 x 63 x 36 cm



Later Hermetic Pierced Works Sovereign State 1989/90 *Evax/lead/plaster/fibre/glass/air/rubber/hose* Figure: 66 x 172 x 98 cm

Later Hermetic Pierced Works (1988 - 1993)



A Case for an Angel A Case for an Angel III 1990 *Plastefibre/glass/lead/steel/wax* 197 x 526 x 35 cm

A CASE FOR AN ANGEL (1989 - 1990)



Later Single Lead Bodycase Works The Quarters Of The Earth I 1992 *Lead, fibreglass, air* 87 x 52 x 84 cm

LATER SINGLE LEAD BODYCASE WORKS (1991 - 1995)



HAVMANN (1994)

Havmann Havmann 1994 Größe 10.1 x 3 x 1.90 m

CRITICAL
MASS
(1995)



Critical Mass *Some of the Facts*, Tate St Ives, Cornwall, England, 2002



Another Place *Another Place*, permanent installation at Crosby Beach, Merseyside, England, 2005



Another Place *Another Place*, permanent installation at Crosby Beach, Merseyside, England, 2005



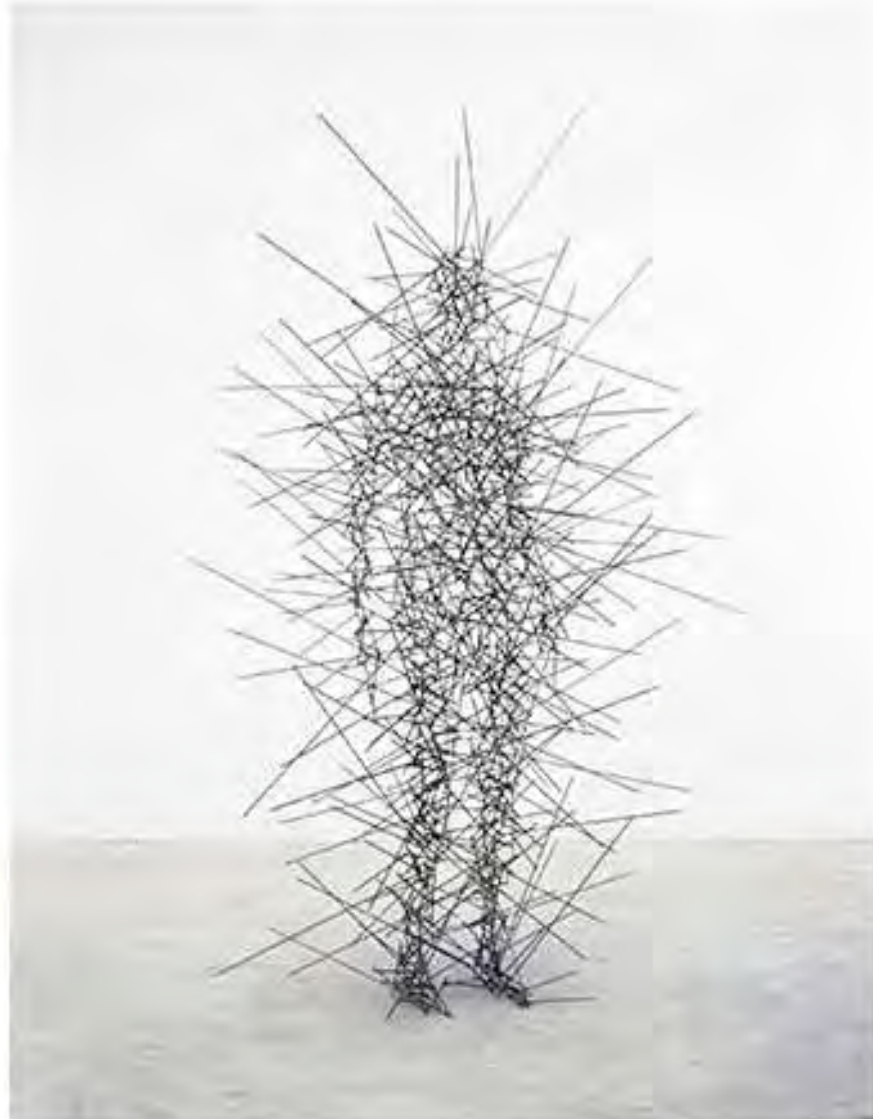
Another Place *Another Place*, permanent installation at Crosby Beach, Merseyside, England, 2005

ANOTHER PLACE (1995)



DOMAIN SERIES
(1999 - 2007)

Domain Series Domain XI 2000 *Mild steel bar* 165 x 160 x 80 cm



QUANTUM CLOUD
SERIES (1999 - 2002)

Quantum Cloud Series Quantum Cloud IX 1999 *mild steel bar 4 mm x 4 mm* 222 x 127 x 106 cm



Inside Australia Mold Making



Inside Australia Permanent installation, Lake Ballard, Menzies, Western Australia 2003



Inside Australia Permanent installation, Lake Ballard, Menzies, Western Australia 2003

INSIDE AUSTRALIA (2002 - 2003)



FEELING MATERIAL
(2003 - 2007)

Feeling Material Feeling Material VII 2003 *Rolls of mild steel wire* 280 x 260 x 260 cm



Broken Column Kirkegardsveien, permanent installation at Stavanger, Norway 2003

BROKEN COLUMN(2003)



DOMAIN FIELD (2003)

Domain Field Level 4 of the BALTIC: vitrine is being insured for its form before being installed in the vitrines



Domain Field *Anthony Gormley*, BALTIC Centre for Contemporary Art, Gateshead, England, 2003



Time Horizon Time Horizon 2006 *Castor* 100 elements / 189 x 53 x 29 cm

TIME HORIZON (2006)



Waste Man 'Waste Man' 2006 *Aluminum, steel, waste and polystyrene* 19.2 x 4.6 x 2.7 m



Waste Man 'Waste Man' 2006 *Aluminum, steel, waste and polystyrene* 19.2 x 4.6 x 2.7 m



Waste Man 'Waste Man' 2006 *Aluminum, steel, waste and polystyrene* 19.2 x 4.6 x 2.7 m

WASTE MAN (2006)



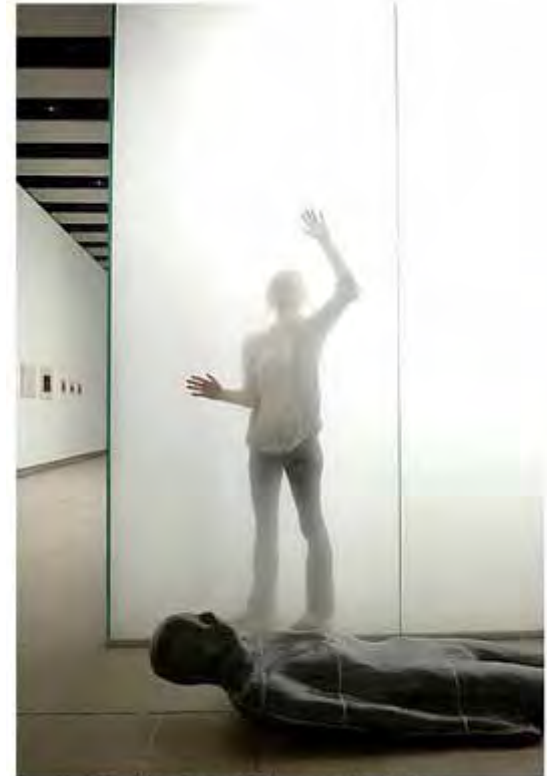
BLIND LIGHT, Sean Kelly Gallery, New York, USA



BLIND LIGHT(2007)



BLIND LIGHT, Sean Kelly Gallery, New York, USA



Ghostly: Blind Light consists of a large semi-transparent glass chamber lit by fluorescent light and filled with thick clouds of steam