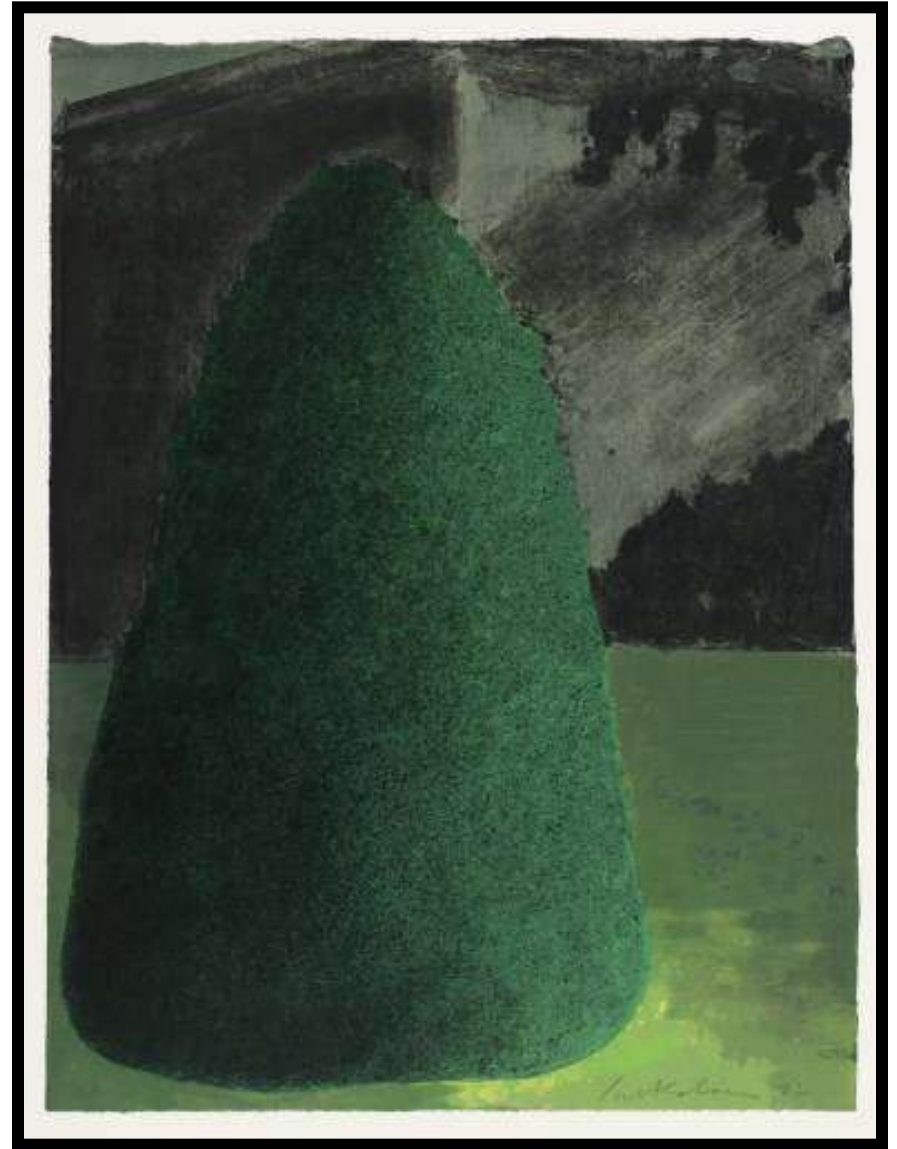


A night landscape featuring a dark sky with a crescent moon and stars. The foreground shows a silhouette of a grassy hill with three trees and a small figure of a person. Large, bright, billowing clouds are visible in the middle ground, partially obscuring the moon and stars.

# NIGHTSCAPES



YASS, Catherine Northwest D2 2001



ABRAHAMS, Ivor Suburban Shrub II Dusk 1972



ADLER, Jankel No Man's Land 1943



AITCHISON, Craigie Crucifixion 9 1987



BOSWELL, James Cafe Kentish Town 1947



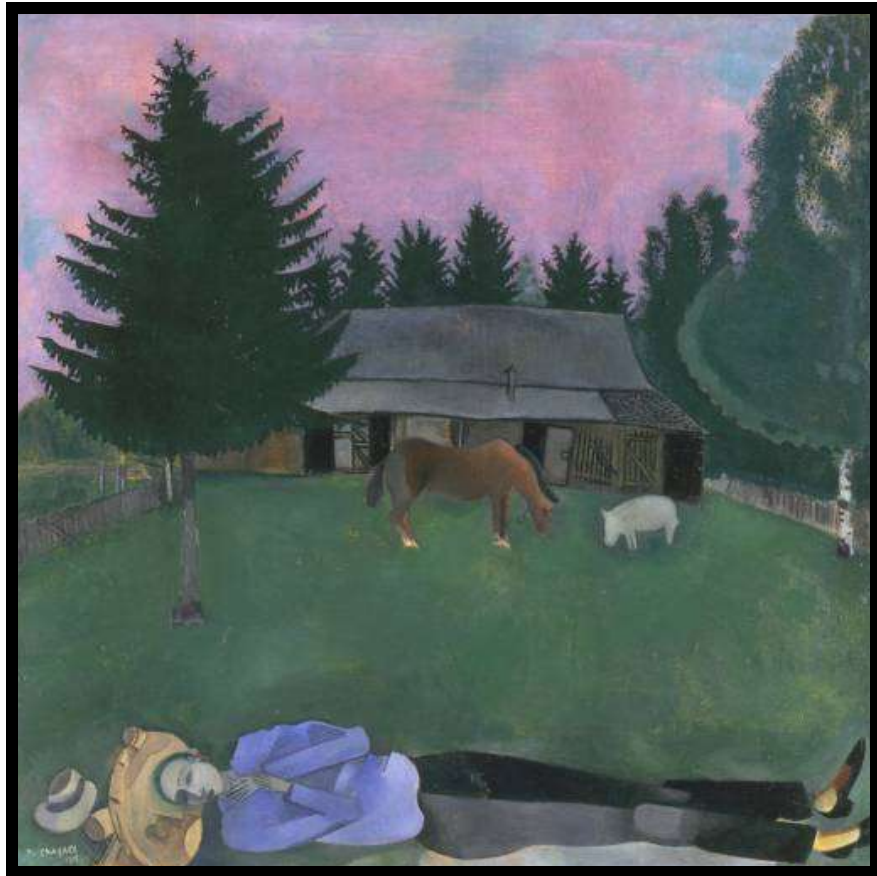
BOSWELL, James The Fall of London Looters 1933



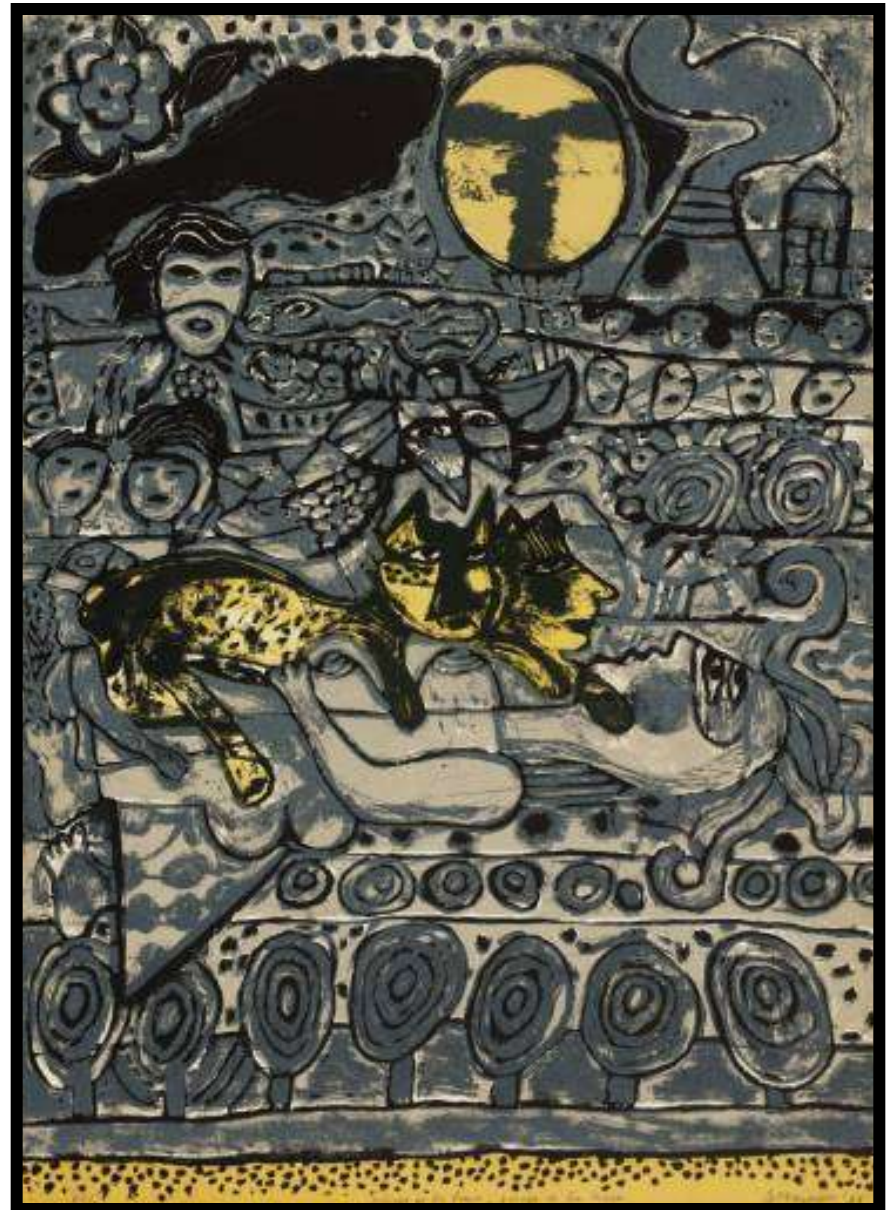
CAUFIELD, Patrick Interior Night 1970-1



CAZIN Marie Evening c1884



CHAGAL, Marc The Poet Reclining 1915



CORNEILLE, Guillaume Untitled 1975



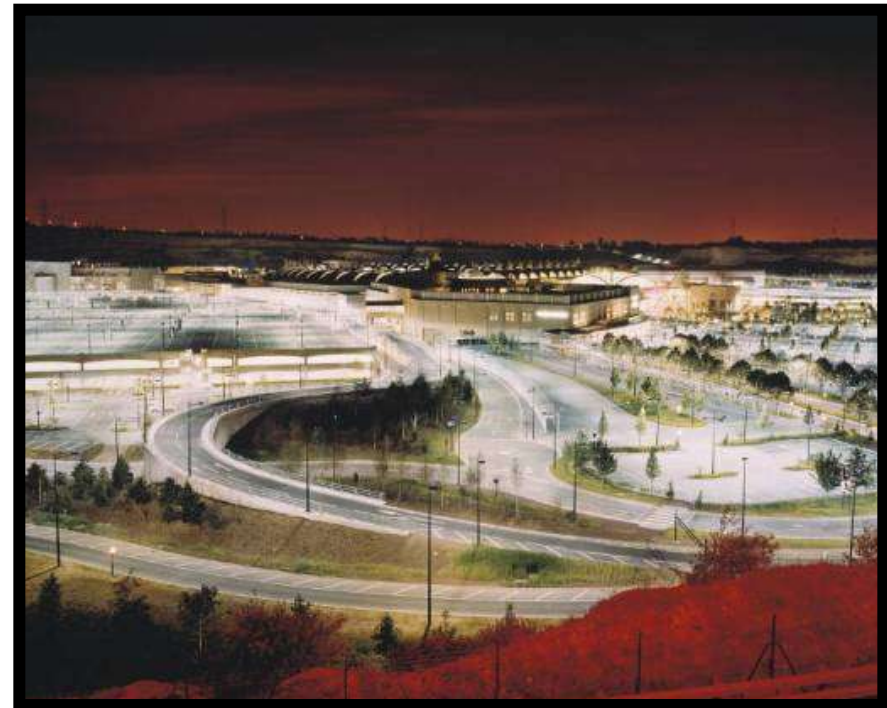
de KARLOWSKA, Stanislaw Fried Fish Shop c1907



DEAN, Tacita Disappearance at Sea 1996



Herman Joseph Evening Ystradgynlais 1948

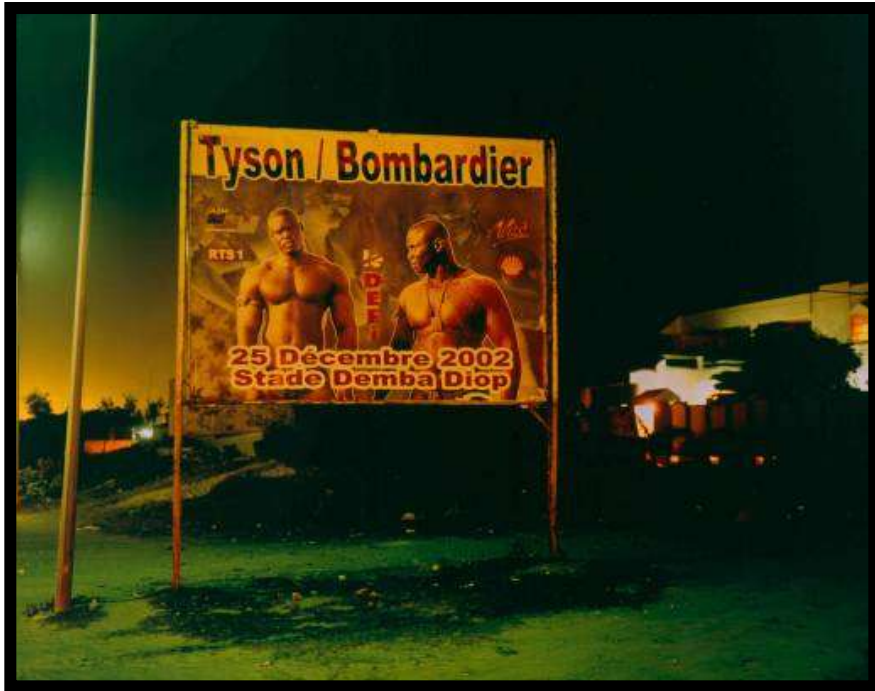


HOLDSWORTH, Dan A Machine for Living 1999





NICOLSON, Seamus Ori 1999



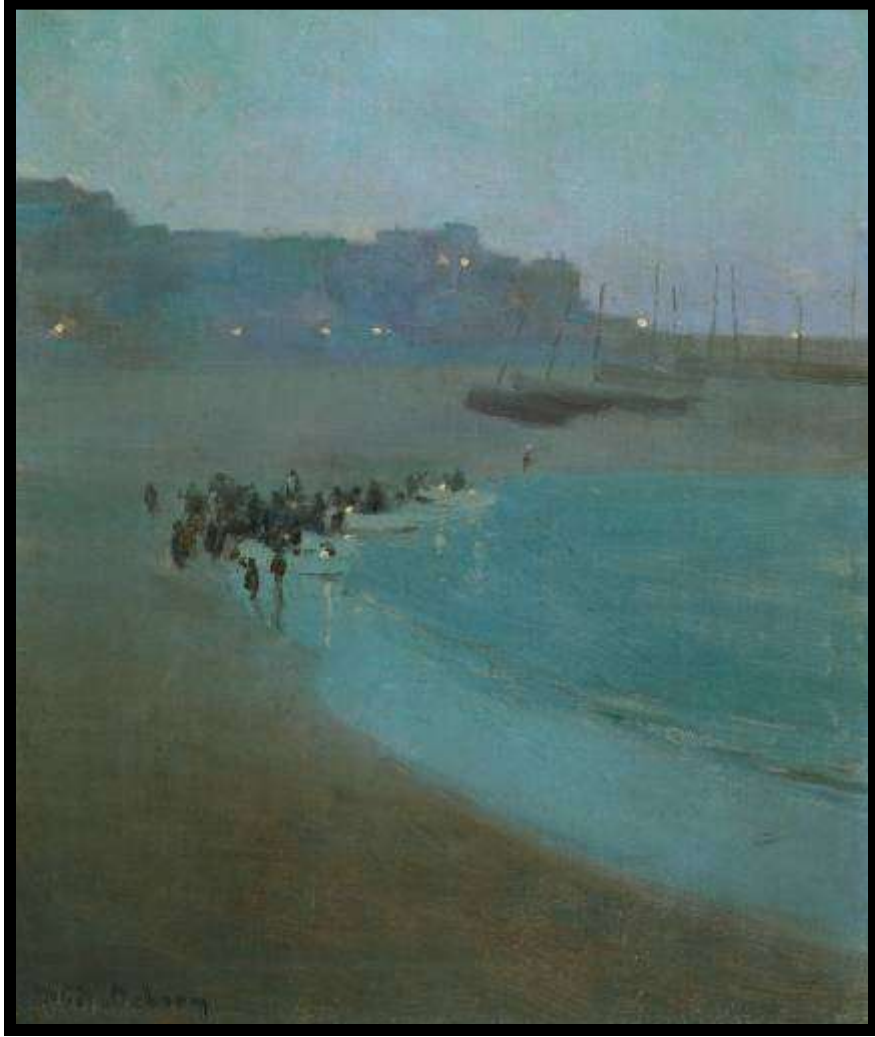
LUXEMBURG, Rut Tyson Bombardier 2003



NOLAN, Sidney Landscape Miner with Dog 1973



OPIE, Julian Truck Birds Wind 2000



OSBORN, William Evelyn Beach at Dusk St Ives c1895



REGO, Paula The Dance 1988



ROBERTS, William Port of London c 1920



SELF, Colin The London Train 1984



SHERMAN, Cindy Untitled film still #48 reprinted 1998



SUTHERLAND, Graham Black Landscape 1939-40



WHISTLER, James Nocturne Blue and Silver - Chelsea 1871



Williams Terrick Quiet Twilight Honfleur 1922