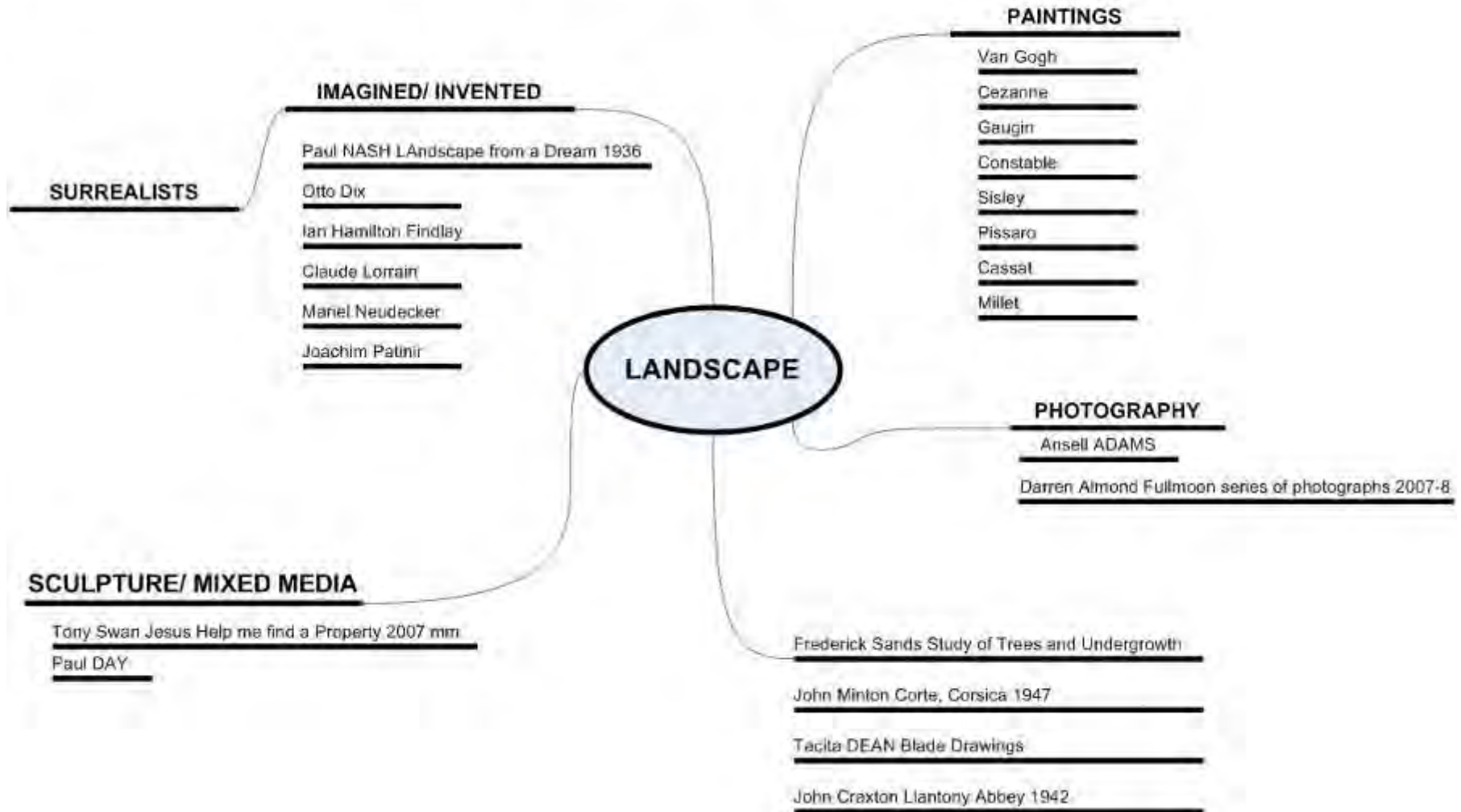




LANDSCAPE PAINTING

HCB

LANDSCAPE Art (see Urban Landscape too)





John Constable- Flatford Mill, 1816-7



George Lambert- Classical Landscape, 1745



Patanazzi workshop- Wine Cooler, 1580

"Classical" Landscape Painting



Francoise Millet- Mountain Landscape with Lightning, 1675



Peter Paul Rubens- The Watering Place, 1615-22



Francois Bucher- Landscape with a Watermill, 1743

“Classical” Landscape Painting

Post-Impressionism can be loosely defined as a rejection of the Impressionists' concern for the naturalistic depiction of light and colour in favour of an emphasis on abstract qualities or symbolic content. It therefore includes NEO-IMPRESSIONISM, SYMBOLISM, CLOISSONISM, SYNTHETISM and the later work of some Impressionists.



Cezanne
bridges Impressionism
and Cubism

The Expressionists:

Artists: *Edvard Munch, Kathe Kollwitz*

Germany, 1905-1940's

The intention is not to reproduce a subject accurately, but instead to portray it in such a way as to express the inner state of the artist. EMOTIONAL!!!!

Many different 'schools' or groups of artists for this movement (Der Blaue Reiter, Bauhaus)

The Fauves:

Artists: *Henri Matisse, Paul Gauguin*

France, 1898-1908

Means "Wild Beast"

Use of intense colours in uncontrolled way; Not usually realistic colour

Subject matter mostly realistic; somewhat stylized and simplified, but not completely abstracted. The movement was a substantial influence on some of the Expressionists.



Alfred Sisely- Autumn: Banks of the Seine near Bougival, 1873



Camile Pissarro- The Stagecoach, 1870



Gustave Cailliebotte- Paris Street-A Rainy Day, 1877



Mary Cassatt- Children Playing at the Beach, 1884



Claude Monet- Sunrise, 1872



Paul Cezanne -Mont Sainte-Victoire seen from Bellvue, 1882-5



Paul Cezanne- Landscape, Auvers, 1873



Paul Cezanne -Mont Sainte-Victoire, 1902-4



Paul Signac- Red Buoy, Saint Tropez, 1895



Georges Seurat-The Lighthouse at Honfleur, 1886



Pissarro- Gelee blanche , 1873



Henri Matisse- The Luxembourg Gardens, 1901



**Henri Matisse- Glimpse of the Notre Dame
In the Late Afternoon 1902**



Henri Matisse- Place des Lices, St Tropez 1904

Maurice de Vlaminck- Autumn Landscape, 1905



Maurice de Vlaminck- Landscape with Red Trees, 1906



Maurice de Vlaminck- Potato Pickers, 1905

**Vincent Van Gogh- Landscape with House
and Labourer ,1889**



Vincent Van Gogh- Wheatfield with Cypresses, 1889



Vincent Van Gogh- Road with Cypress and Star, 1890



Vincent Van Gogh- Autumn Landscape, 1885



Vincent Van Gogh- Starry Night, 1889



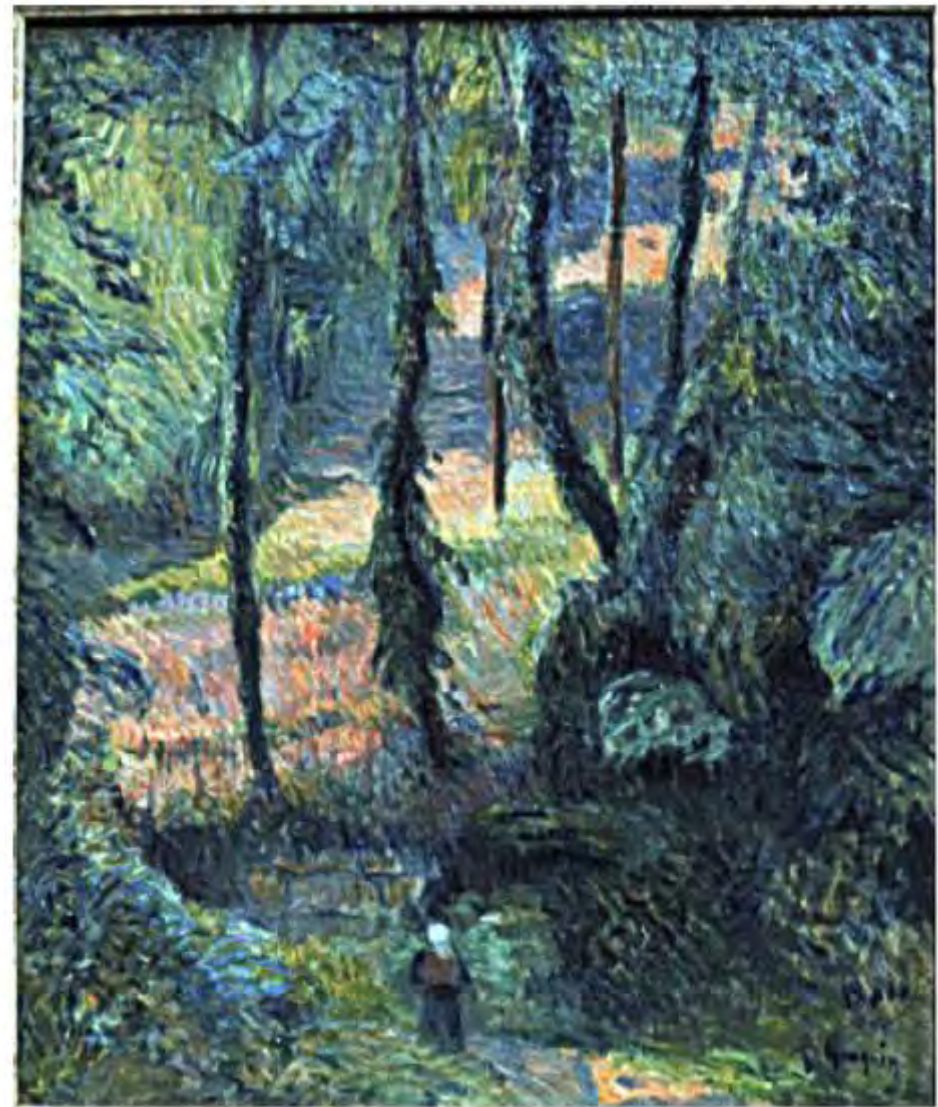
Vincent van Gogh- Wheatfield with Crows , 1890



Paul Gauguin- Landscape at Le Pouldu , 1890



Paul Gauguin- Breton Village in the Snow, 1886



Paul Gauguin- Brittany Landscape ,1886

Paul Gauguin- Tahitian Landscape, 1891



Paul Gauguin- Mahana no atua (Day of the Gods), 1894

Edvard Munch- Girls on the Bridge, 1902



Edvard Munch - 'Girls on a Bridge' - Painted in 1902 - Est. \$24 / 28 million



Edvard Munch- Moonlight, 1885



Edvard Munch- The Scream (Despair), 1893



Edvard Munch- The Sun, 1912

**Landscapes wide range of
painters / photographers
from very early to
contemporary**



ALMOND, Darren Full moon@Li 2008



ALMOND, Darren Full moon@Castle Stack 2007



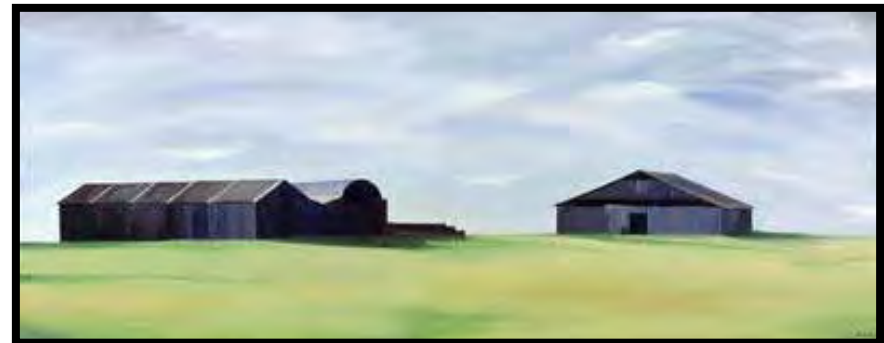
BAIRD, Margaret On the Farm 1968



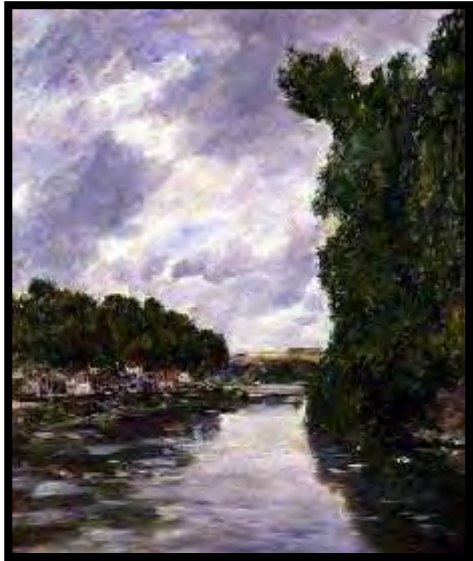
BAN, Magdolna Legend of Balaton 2003



BELLINI Giovanni Agony in the Garden c1465



BIANCHI, Ana Summer Barns



BOUDIN, Eugene River near
Abbevill 1894



BRAIN, ANN October Afternoon 2008



BREUGEL, Jan the Elder Travellers in Forest Landscape 1608



BREUGEL, Pieter the Elder Winter Landscape with Bird trap 1601



Bruegel Pieter 16thC



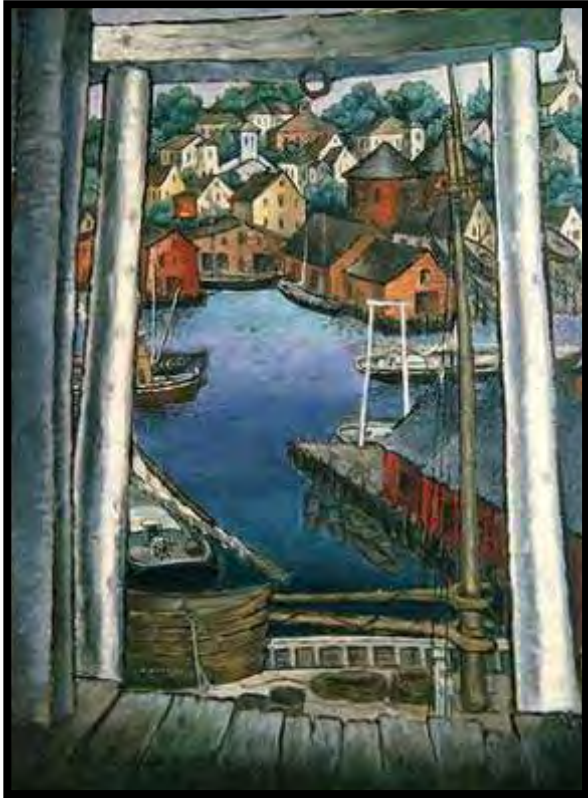
BUHLER, Robert Tow Path 1955



CASSATT, Mary Stevenson Two Seated Women



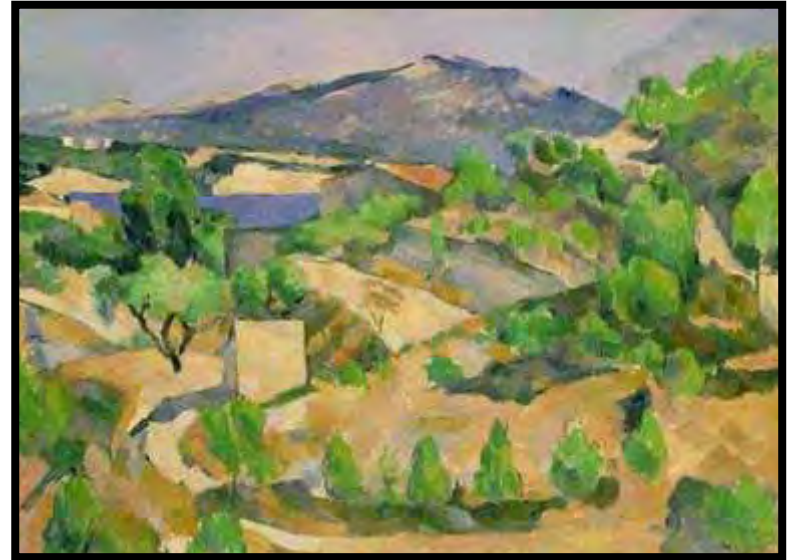
CEZANNE, Paul Landscape in the Ile de France



COLEMAN, Glenn Gloucester Harbour c1925



CHURCH Frederick The icebergs 1860



CEZANNE, Paul Mountains in Provence



CEZANNE, Paul Montagne Sainte Victoire 1904



CONDOR, Claude Dead sea 1875



CONSTABLE, John Stonehenge 1835



CONSTABLE, John View from Highgate Hill c1820's



CONSTABLE, John View of Flatford Mill



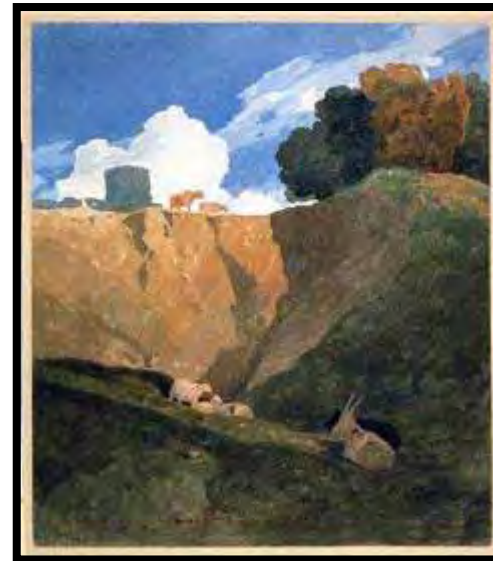
COROT, Jean Bridge at Mantes c 1842



COROT, Jean Lago di Piediluco Umbria c1828



COTMAN, John Sell Hell
Cauldron c1810



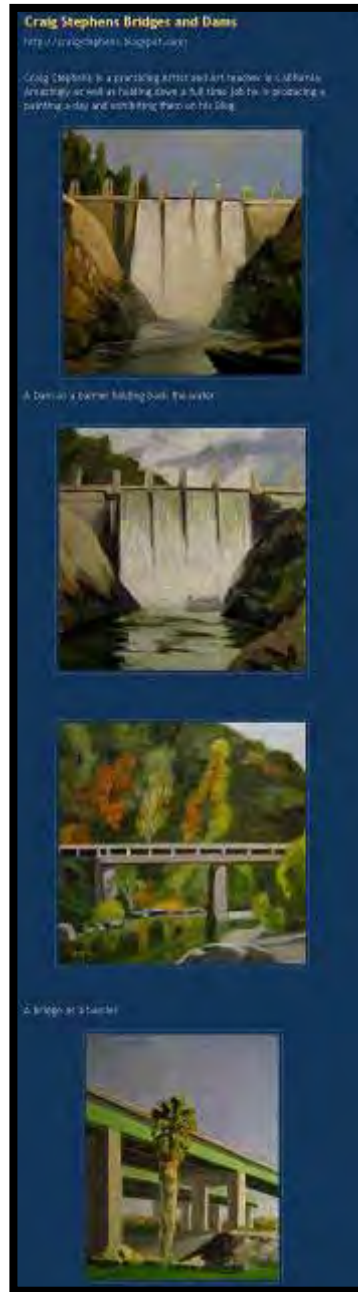
COTMAN, John Sell Marl Pit c1809



COURBET, Gustave Chasm at Conches
1864



COX, David Road to the Mill 1849



Craig Stevens bridges and
dams



COURBET, Gustave Landscape near Ornans c1858



CROSS, Henri-Edmond Autumn Landscape c1903



CROW, Derek La Roque Jersey 1995



CUYP, Aelbert A road near the River 1650s



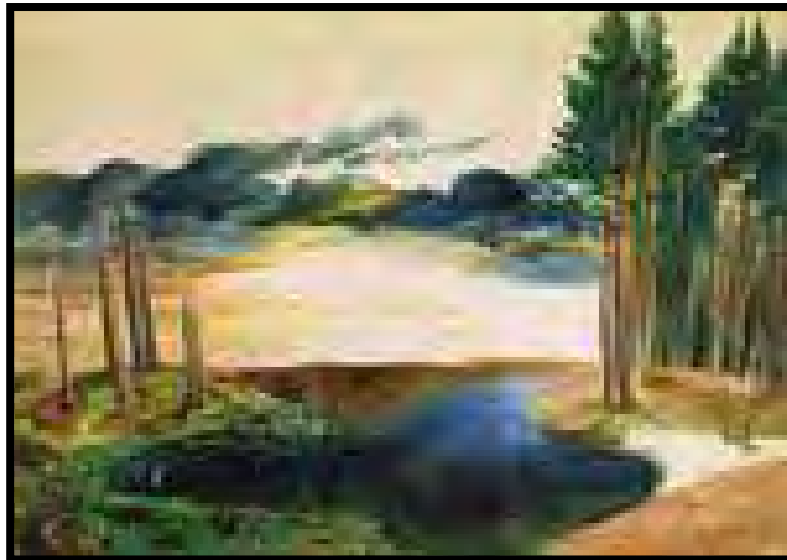
DEGAS, Edgar Dead fox lying in the undergrowth 1865



DONNE, Eithne



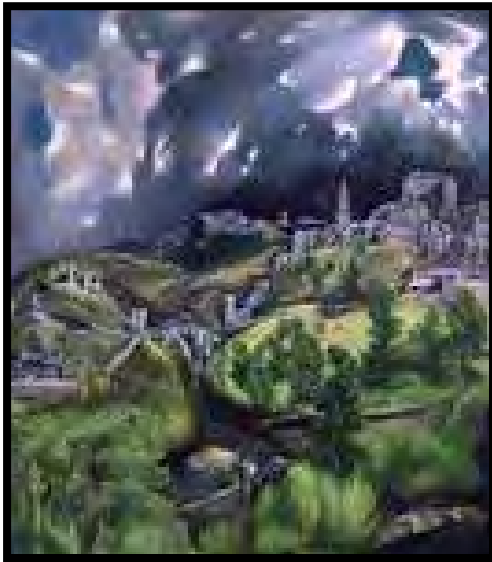
DORE, Gustav Scottish Landscape



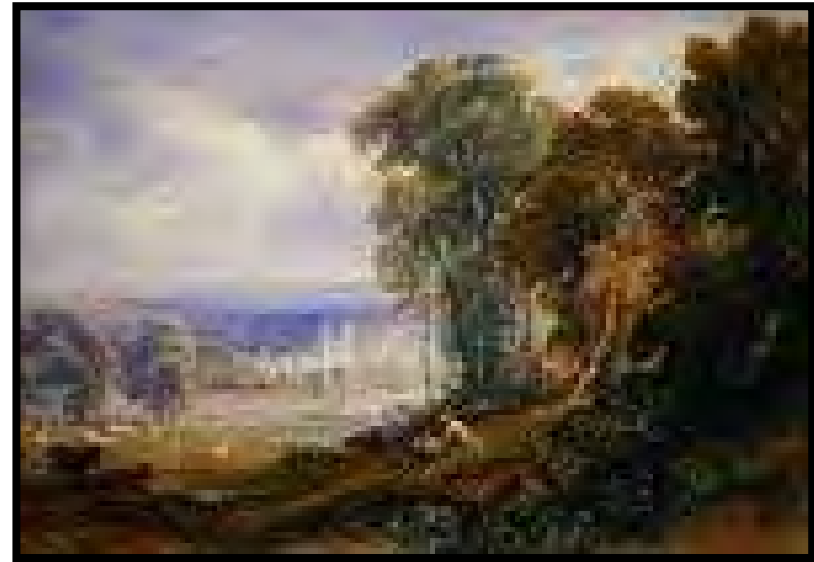
DURER, Albrecht Lake in the Woods



EASTON, Timothy Hoeing Team and Iris Fields 1993



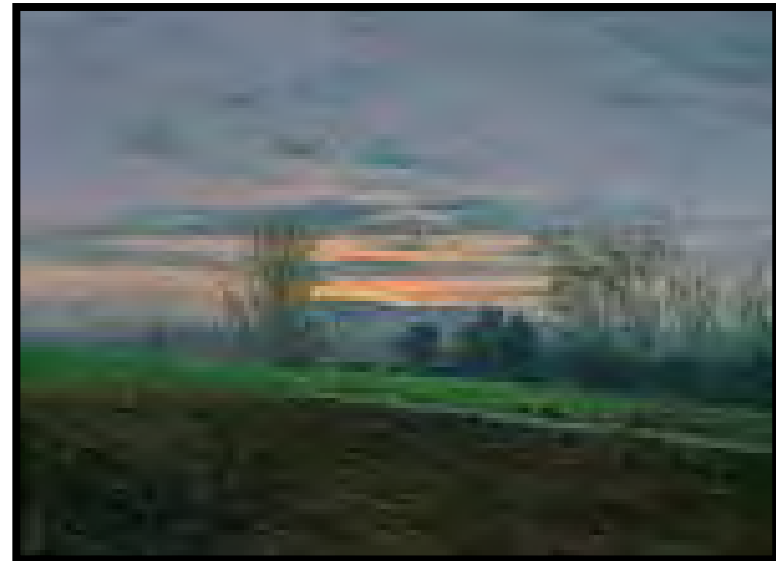
EL GRECO, View of Toledo c1597-99



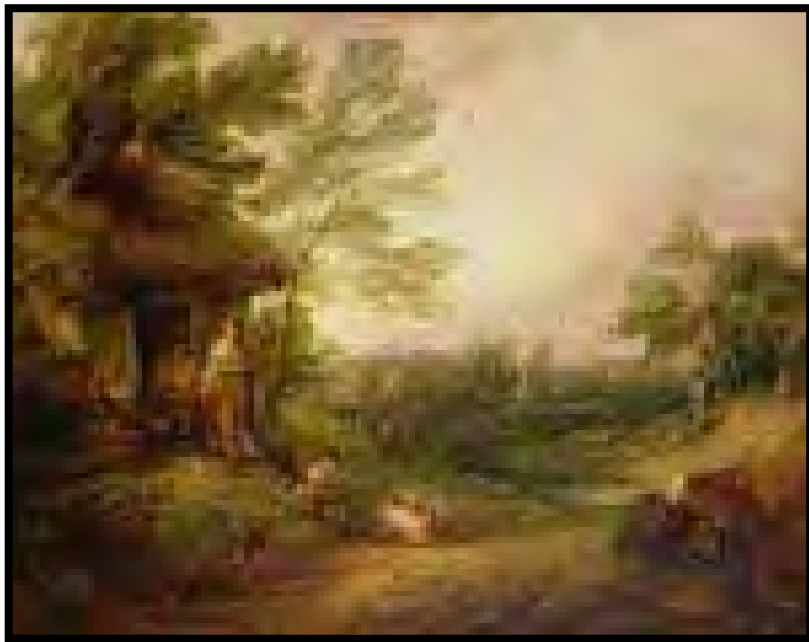
FIELDING, Anthony Vandyke Byland Abbey 1851



FRIEDRICH, Caspar Tree of Crows 1822



FRIEDRICH, Caspar Ploughed Field c1830



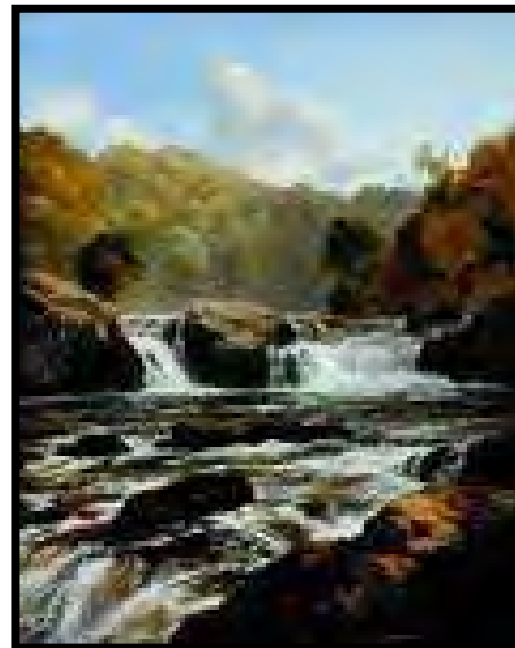
GAINSBOROUGH, Thomas Cottage Door with Girl and Pigs c1786



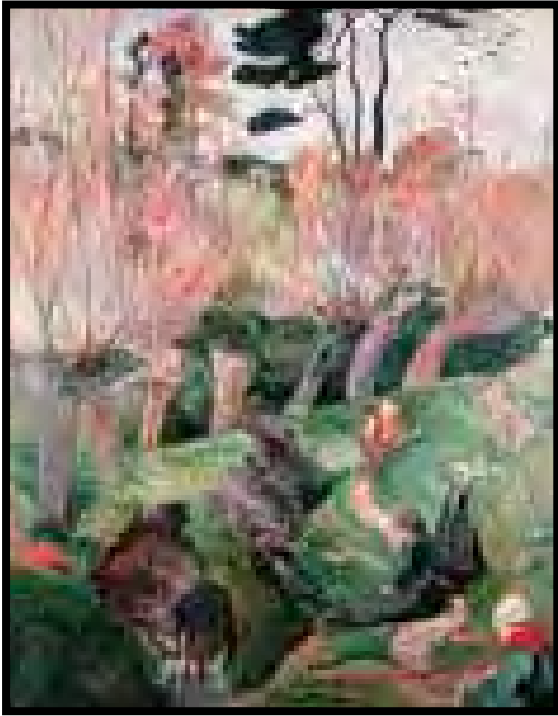
GAINSBOROUGH, Thomas Landscape with Sheep c1744



GARDEN, William Fenland Lane with Pollarded Willows 1887



GILL, Edmund Falls on the Clyde 1865



GAUGIN, Paul Breton Landscape 1889



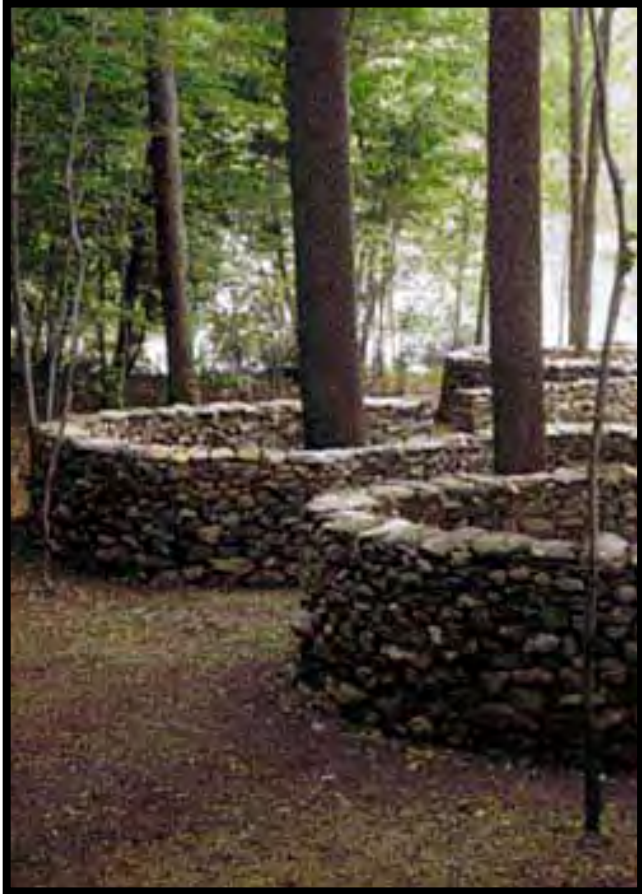
GAUGIN, Paul Landscape at Pont Aven 1888



GAUGIN, Paul Washerwomen at Pont Aven 1886



Gauguin 1890 Haystacks in Brittany



Goldsworthy wall1



GOLDSWORTHY, Andy untitled



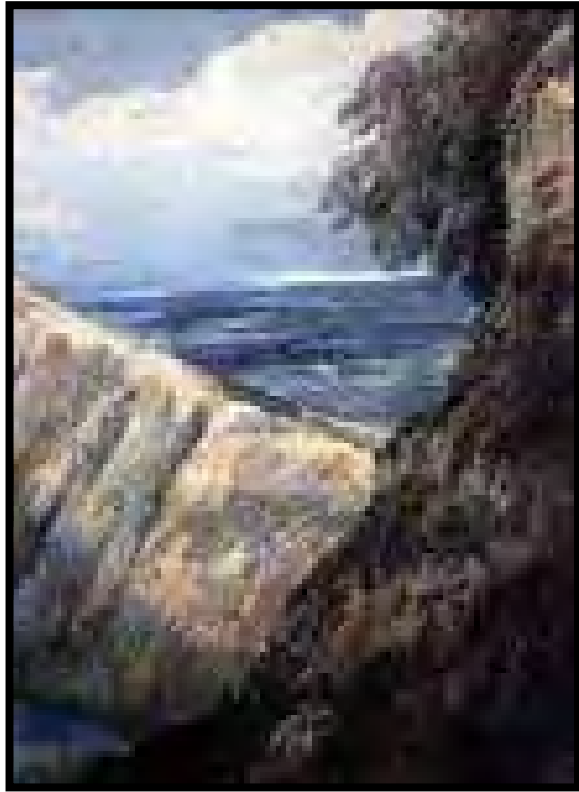
Goldsworthy getout



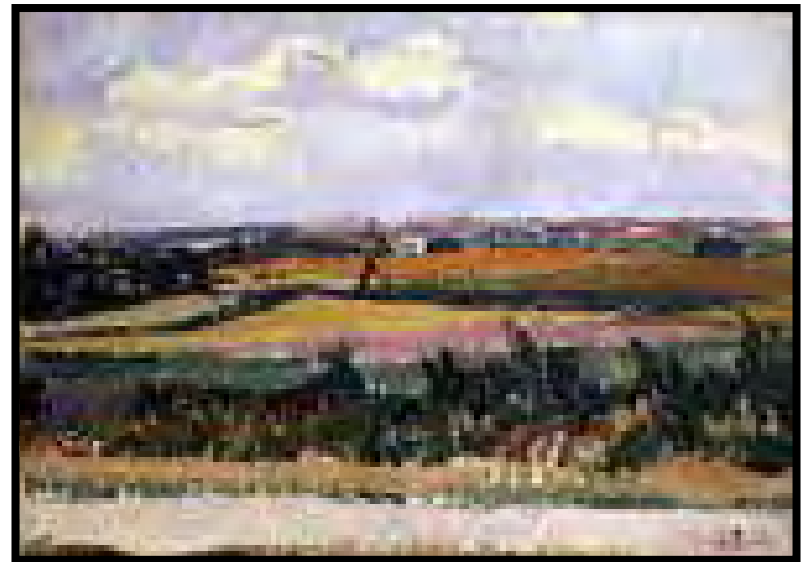
GOLDSWORTHY, Andy Rain Shadow



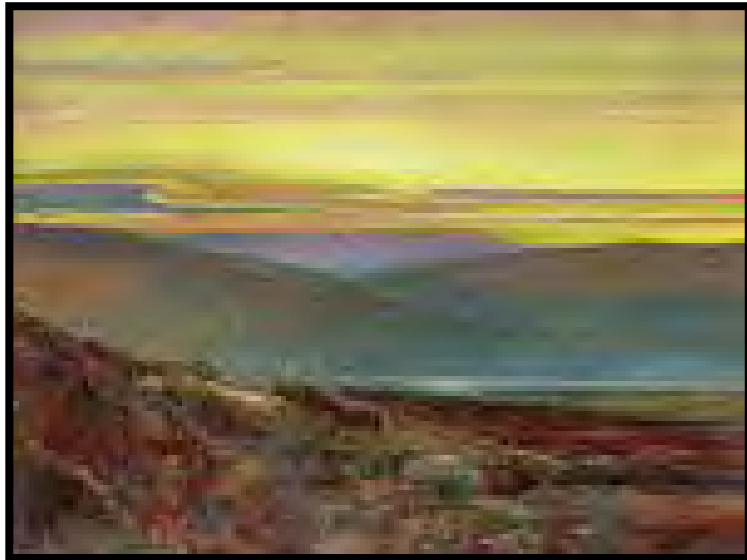
Goldsworthy



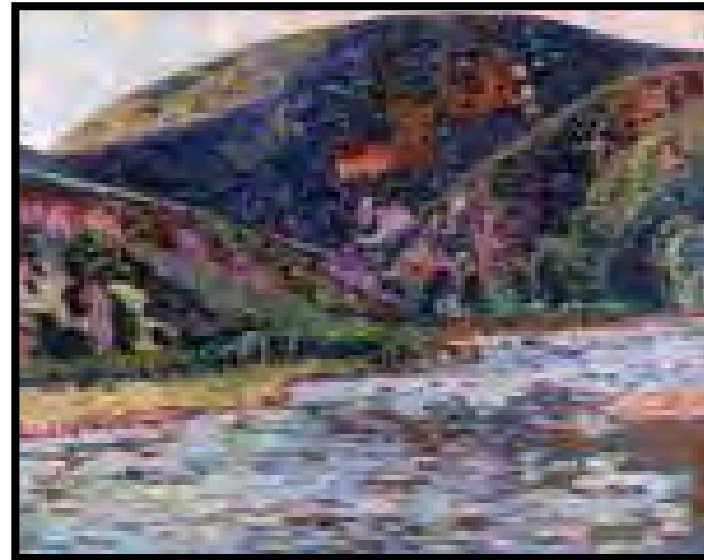
GIRTIN, Thomas Coast of Dorset 1787



GORE, Spencer Frederick In Berkshire 1912



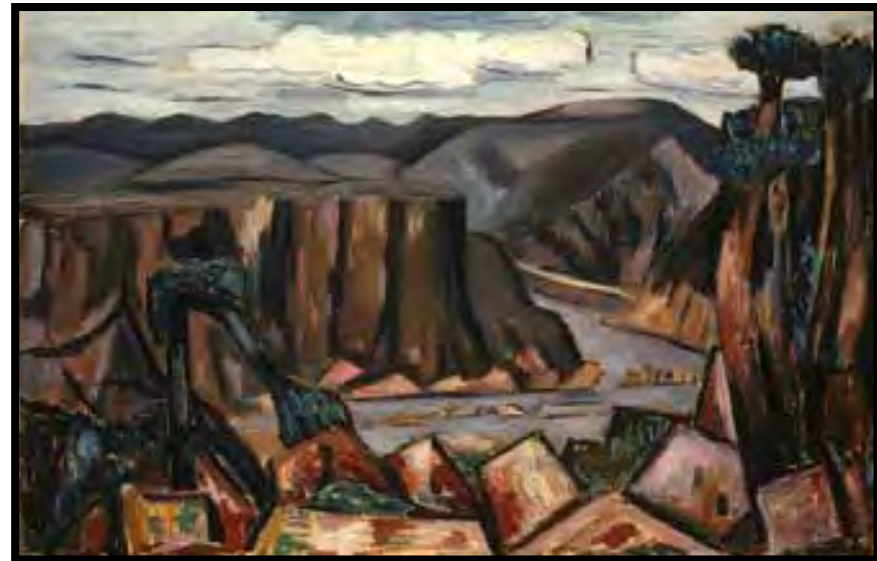
GRIMSHAW John, A Lake at Sunset c1880



GUILLEMET, Jean Creuse in Summertime 1895



Hart Benton, Thomas 1964 Trail Riders



Hartley, Marsden 1922 Landscape no 5



HESSE, Hans Mining Landscape 1521



HIROSHIGE, Utagawa Hitachi Province
Kashima Great Tomb 1853



Homer Winslow 1901 Coming Storm]



HUGHES, Kevin Lane to the Sea 2008



Hutte Axel Island fog 2002



Hutte Axel audubon swamp



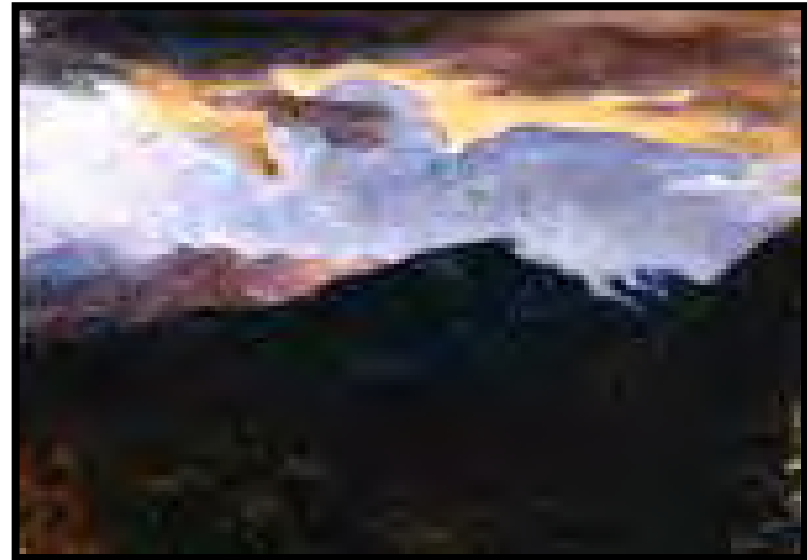
INNES, James Dickson Dark Mountains c1911



KLIMT, Gustav Birch Wood 1903



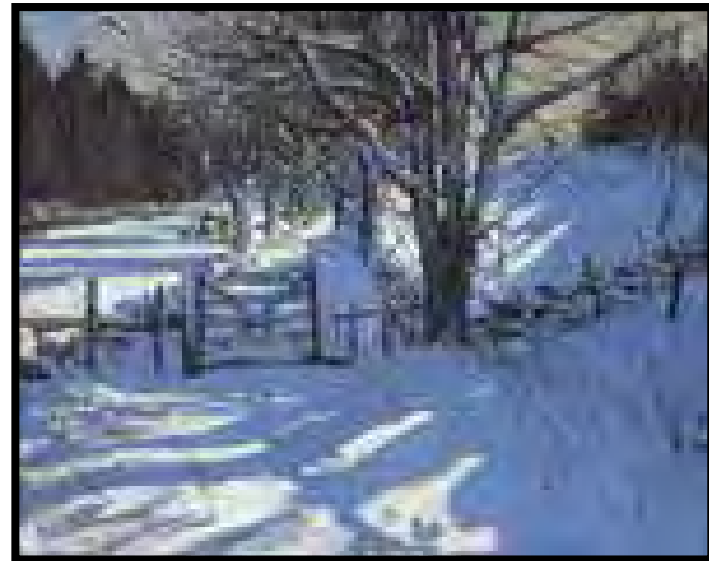
LEAR, Edward Zante 1848



LEIGHTON, Frederick Landscape c1865



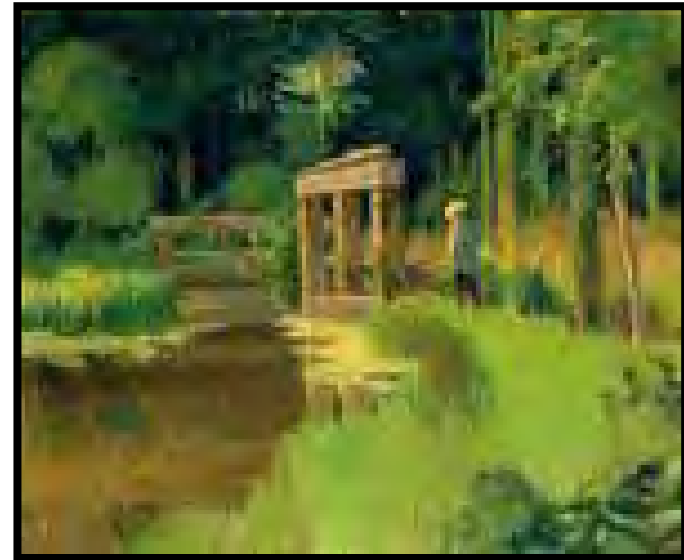
LORRAIN, Claude Landscape with Castle



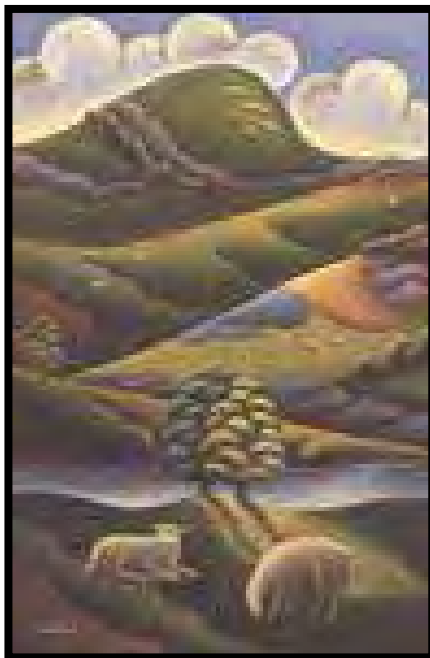
MACARA, Andrew Gate near Youlgreave Derbyshire



MACKINTOSH, Charles Rennie Village of La Lagonne c 1856



MANET, Edouard In a Park 1874



MAREK, Jerzy In the Highlands 1987-93



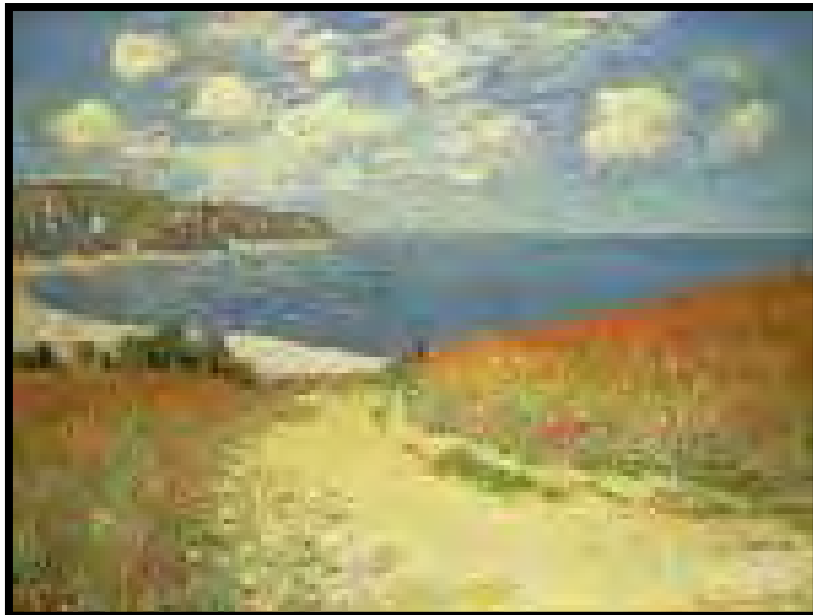
MILLAIS, Sir John Lingering Autumn 1890



Mondrian, Piet gray tree 1911



Mondrian, Piet red tree 1908



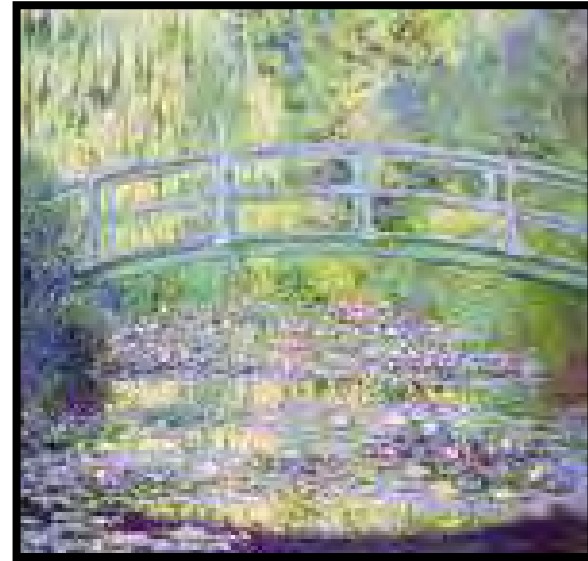
MONET, Claude Meadow Road to Pourville 1882



MONET, Claude Seine at Vetheuil 1879



MONET, Claude Train in the Country c1870-1



MONET, Claude Waterlily Pond with Japanese Bridge 1899



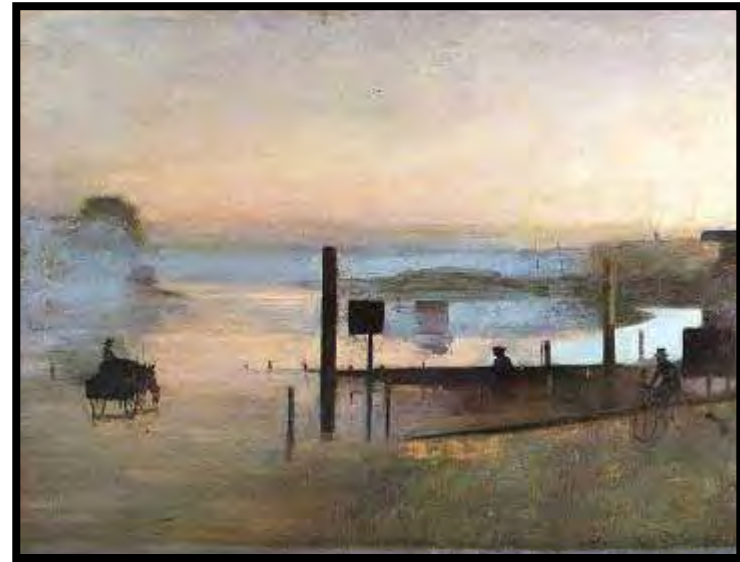
MOORE, Henry Mont Blanc from Servoz 1856



PALMER Skirts of a Wood 1825



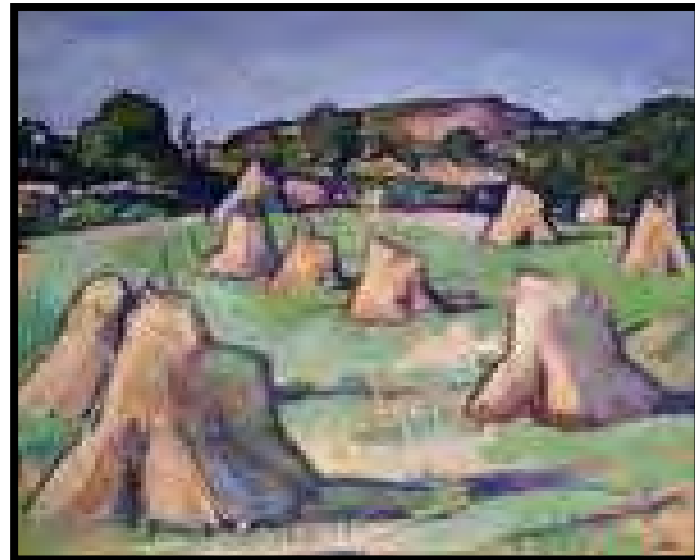
PARAG, Emil Autumn 1963



PASSMORE Victor quiet river 1943



Patinir, Joachim Go to the Underworld



PEPLOE Samuel Cornfield 1919



PISSARRO, Camille Landscape at Chaponval 1880



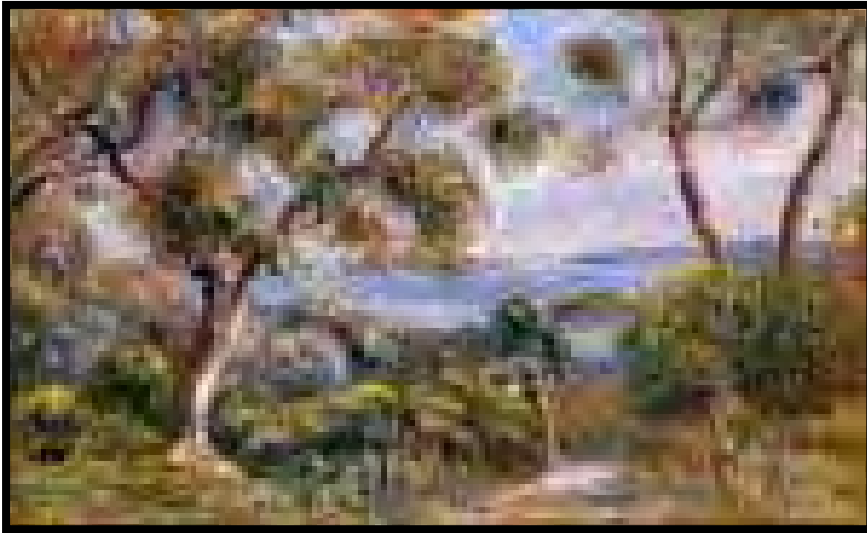
PISSARRO, Camille View towards Pontoise Prison 1881



POUSSIN, Nicholas Landscape with Diogenes 1648



POWIS Paul Bridge



RENOIR, Pierre Auguste Sea at Cagnes c1910



RENOIR, Pierre Auguste Woman picking flowers in the Garden of Les Collette 1912



RENOIR, Pierre Auguste Barges on Seine c1869



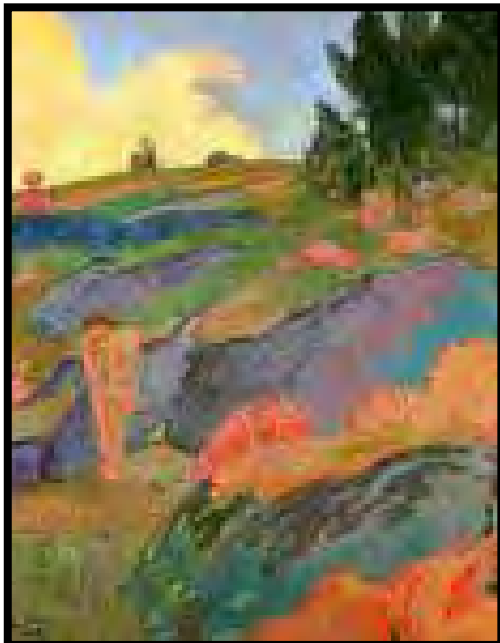
RERIKH, Nikolai Tibet 1936



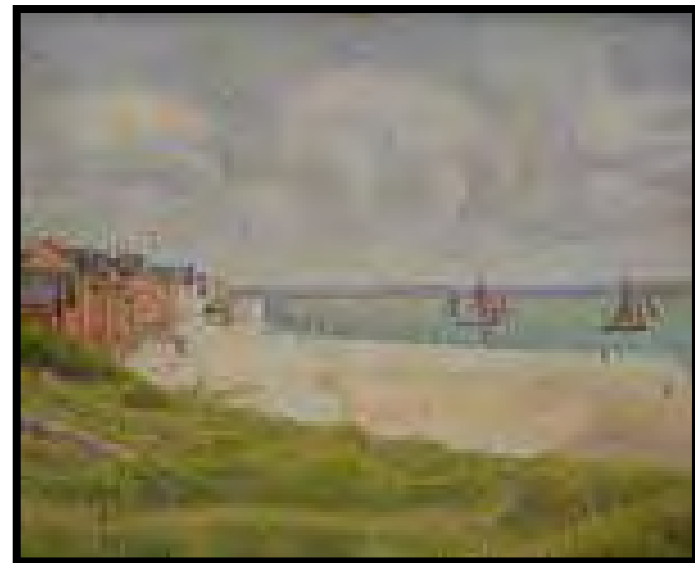
ROUSSEAU, Henri Exotic Landscape 1910



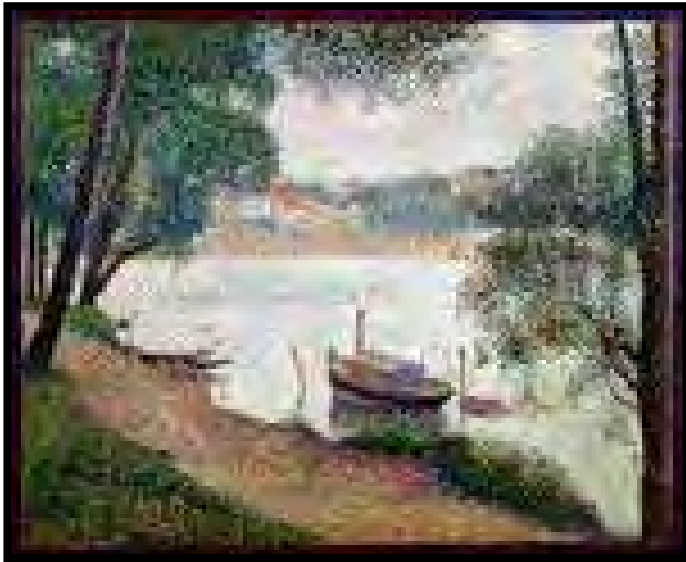
RUBENS, Peter Paul A landscape with Shepherd c1638



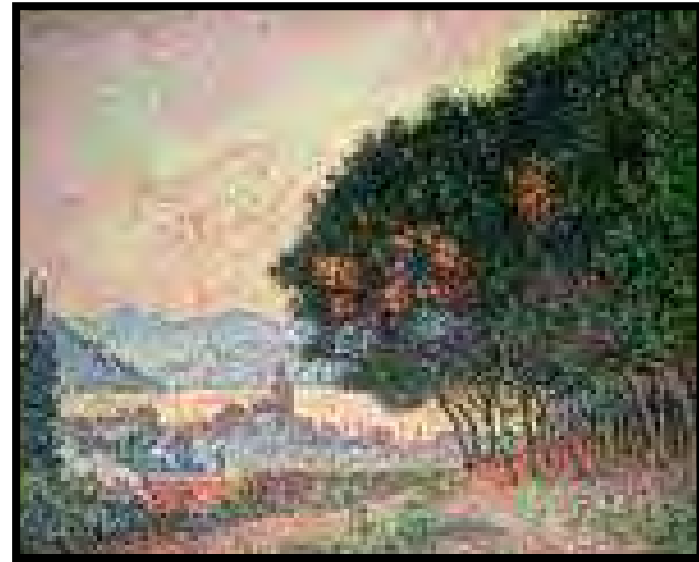
SERUSIER PAul Breton Eve c1890



SEURAT Georges Le Crotoy looking upstream 1889



SEURAT, George River Landscape with Boat 1887



SIGNAC, Paul Forest nr St Tropez 1902



SISLEY, Alfred Plane at Veneux c1878



SISLEY, Alfred Seine at Suresnes 1877



SISLEY, Alfred Springtime at Veneux 1880



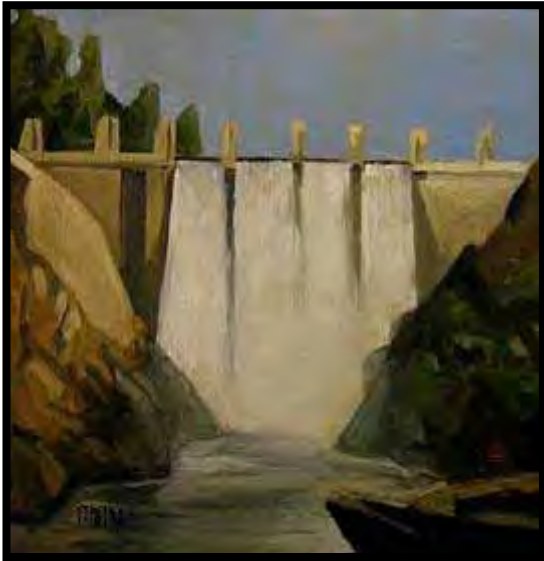
SISLEY, Alfred Gardens of Hoschede 1881



SMITHSON, Robert spiral_jetty



SMITHSON, Robert broken-circle



STEVENS, Craig dam



STUBBS, George Chesnut Mare
and Foal in Wooded landscape
c1761-3



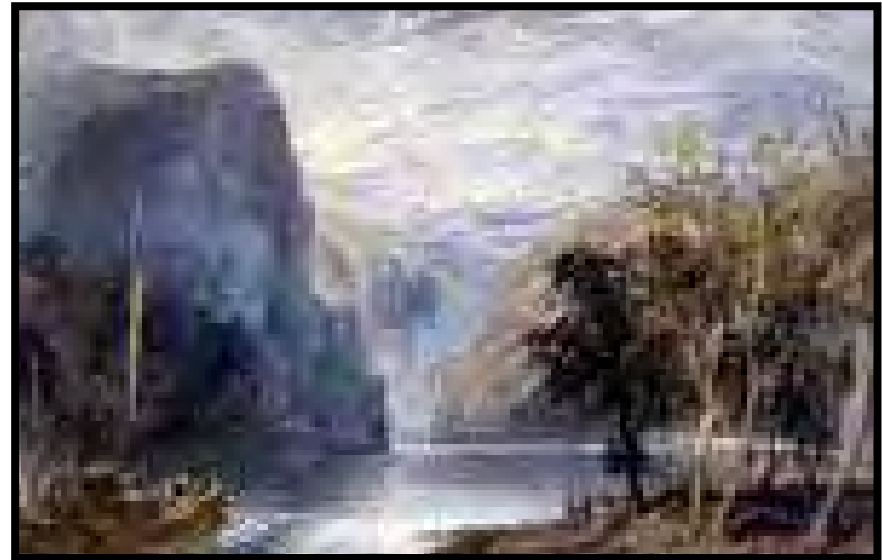
TEASDALE, Anna Wellow, Bath 1994



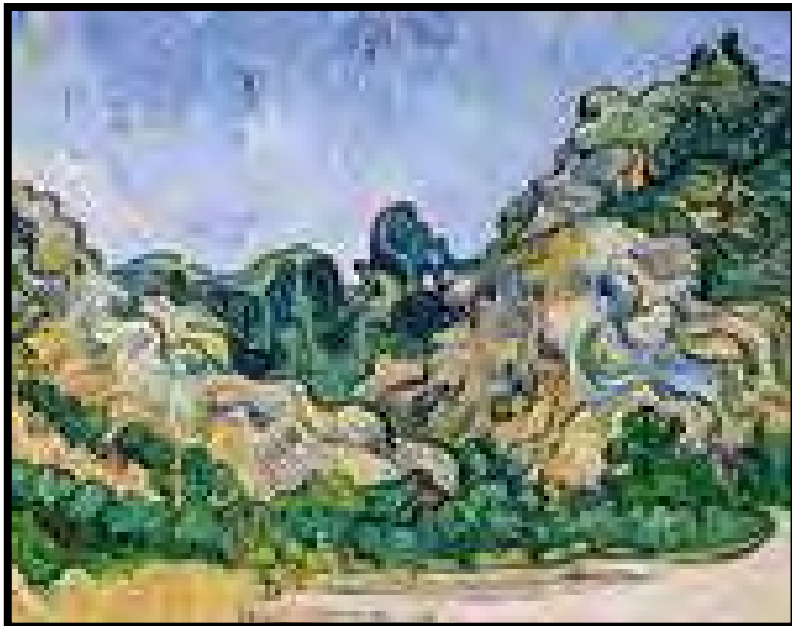
Turner Joseph 1827 A yorkshire River



TURNER, Joseph Landscape with Walton Bridges c 1845



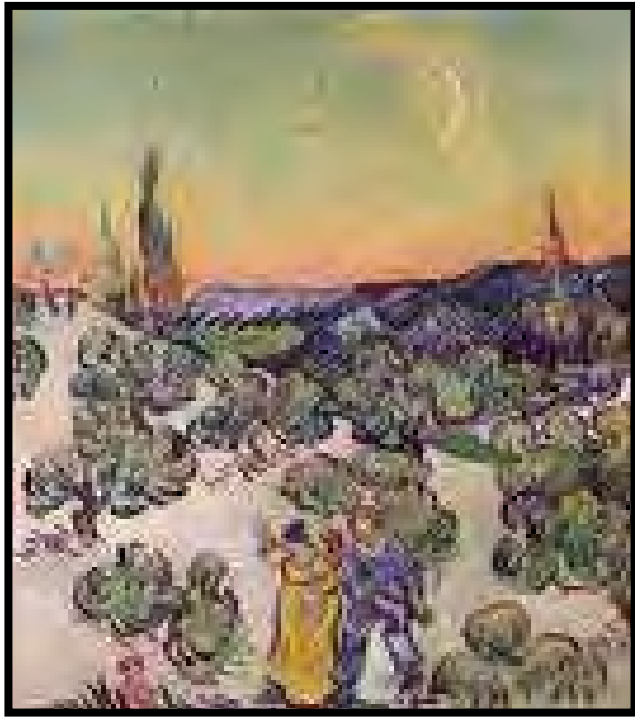
TURNER, Joseph Mallord William Lorelei Rock c1817



Van GOGH, Vincent Alpilles 1889



Van GOGH, Vincent Green Wheatfields behind the Asylum 1889



Van GOGH, Vincent Moonlit landscape 1889



Van GOGH, Vincent Thatched cottage at Cordeville 1890



Van GOYEN, Jan View across the Rhine at Rhenen 1648



Vuillard, Eduard 1894 Landscape of the Ile de France



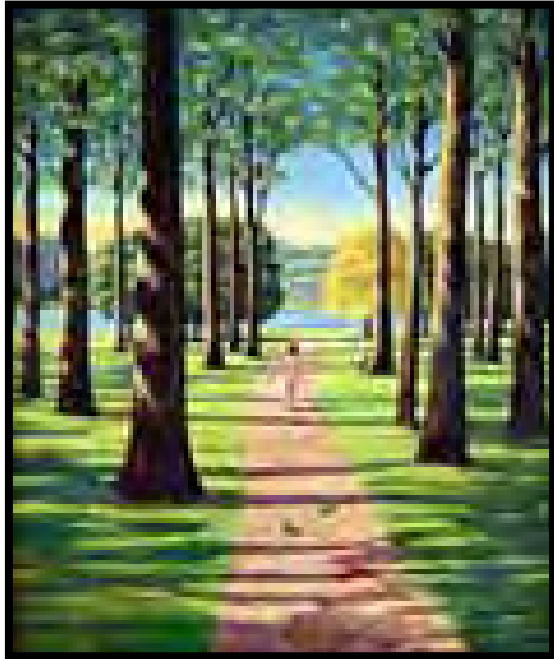
Wall Jeff sudden gust of wind



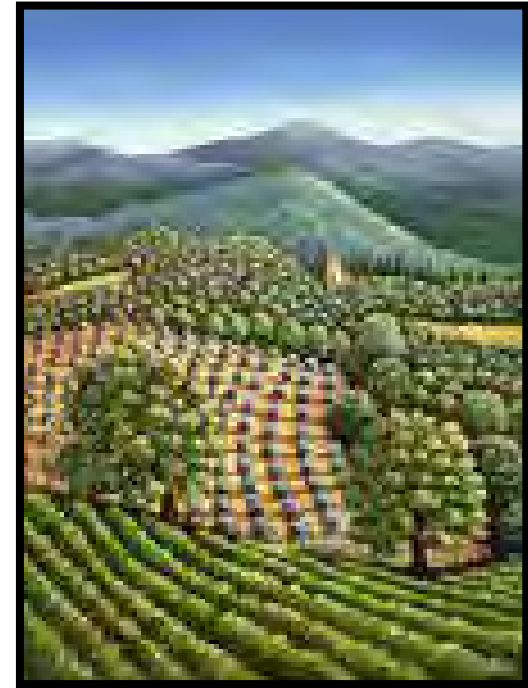
Wall, Jeff still creek 2003



Wood, Grant 1939 New Road



WRIGHT, Liz Stroll in Richmond Park 1955



WRIGHT, Liz Tuscan Landscape 1990



WYETH, Andrew



Zorach, William Untitled Undated



CRAXTON, John Llanthony Abbey 1942

John Constable



John Constable *The Opening of Waterloo Bridge* (1817) Oil on canvas, 111 x 143 cm



J.M.W. Turner, *Home on a Navigable River*, 1845-1847, oil on canvas, 101.5 x 146.5 cm, Tate Gallery, London



John Constable, *Chapel Pier, Brighton* 1825-7 © Tate

A Few Selected
BRITISH LANDSCAPE ARTISTS



James Ward Gordale Scar c1812-1814



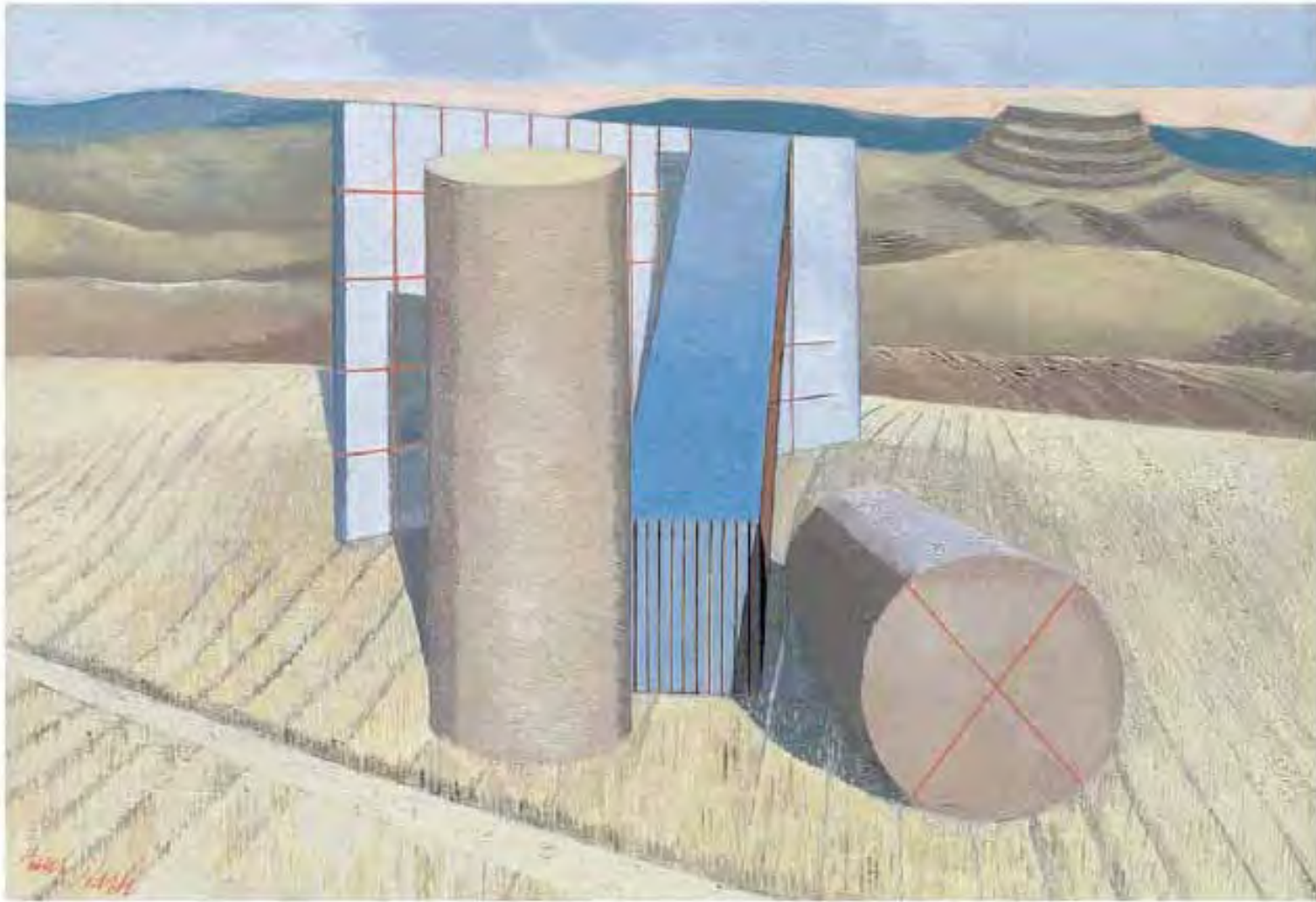
Evelyn Dunbar A Land Girl and Bail Bull 1945



David Young Cameron The Wilds of Assynt c1936



Thomas Gainsborough Cornard Wood c1746



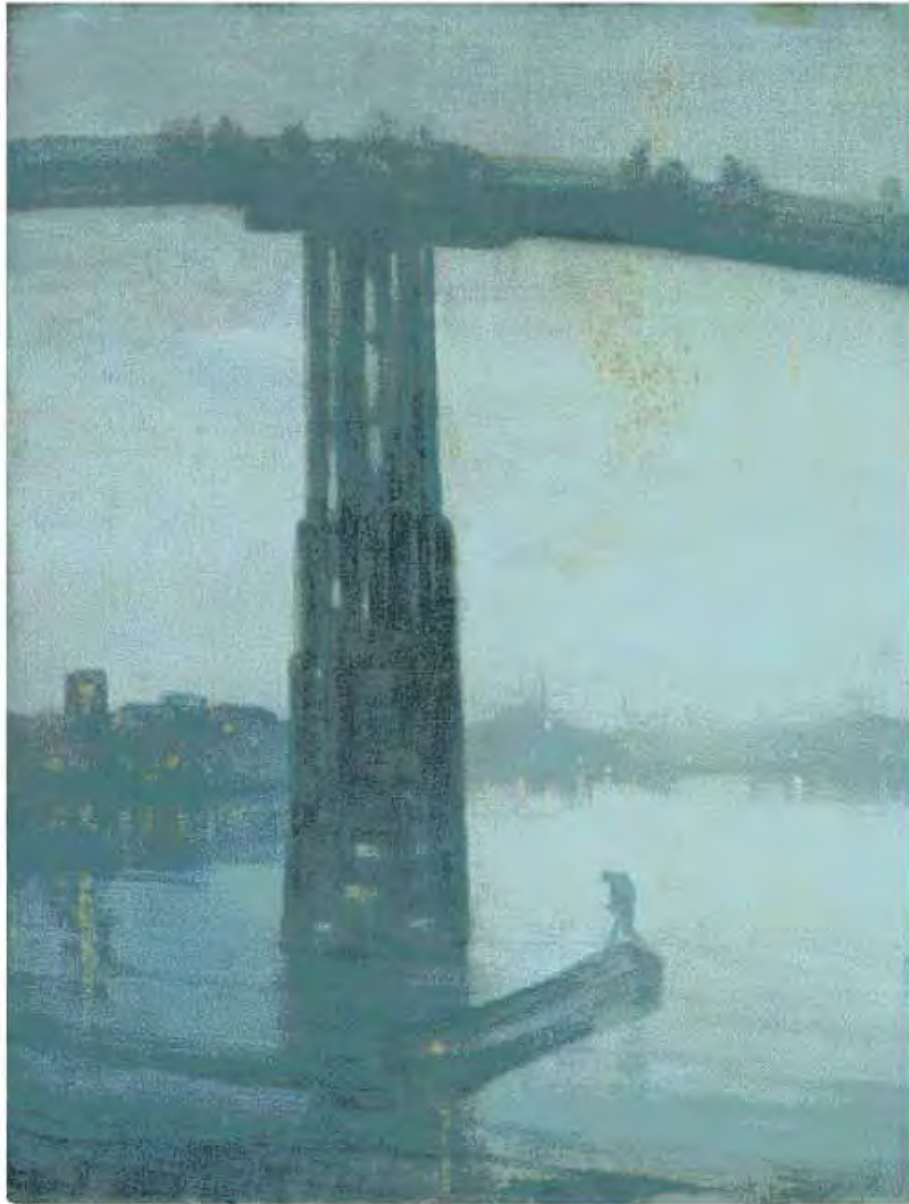
Paul Nash The Equivalent of Megaliths 1935



William Mallord Turner Moonlight 1797



William Mallord Turner Burning of the House of Lords & Commons 1834



James McNeill Whistler Nocturne
Blue and Gold – Old Battersea
Bridge about 1872-5

“ INVENTED” LANDSCAPE



Adam Robert 1780's River Landscape with Castle



Alexander, Francis 1822 Ralph Wheelock's Farm



Allchurch, Emily 2006 Campagna di Reggio Emilia after Fontana



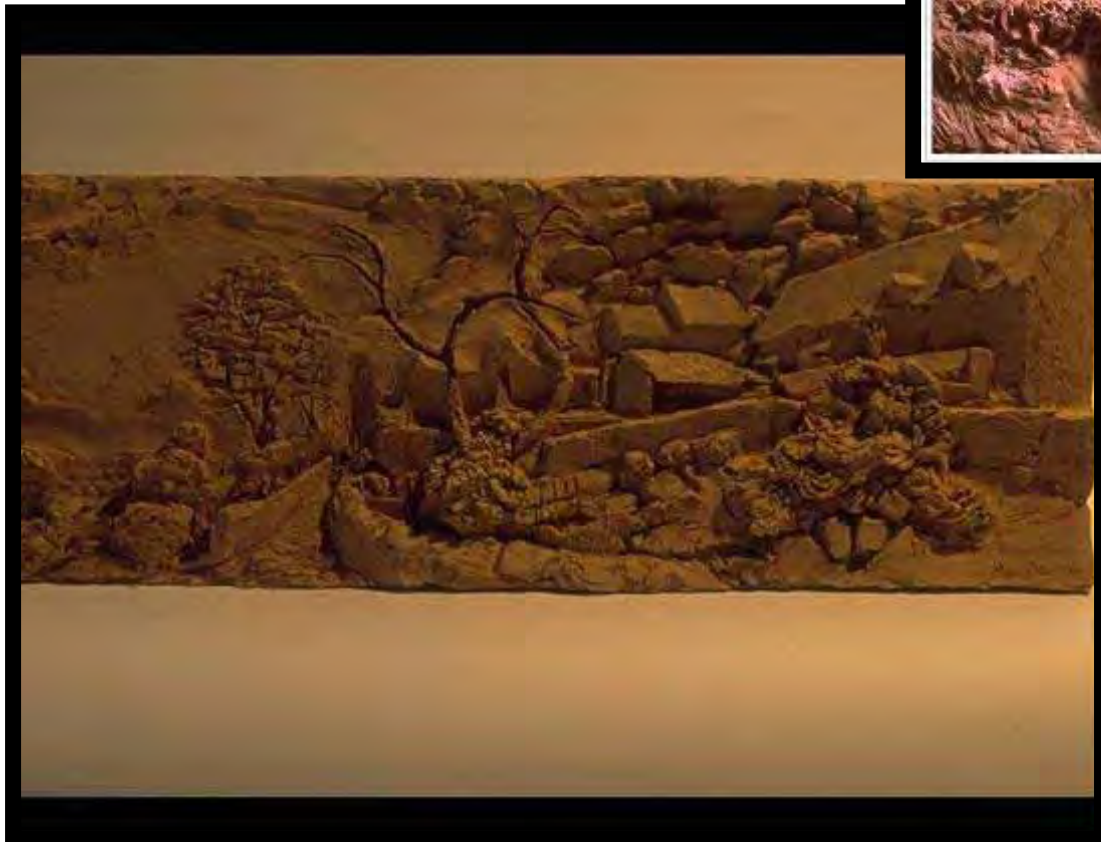
Allchurch, Emily 2008 Waiting for Inspiration after Bellini



Allchurch, Emily 2008 Woldscapes after Patinir



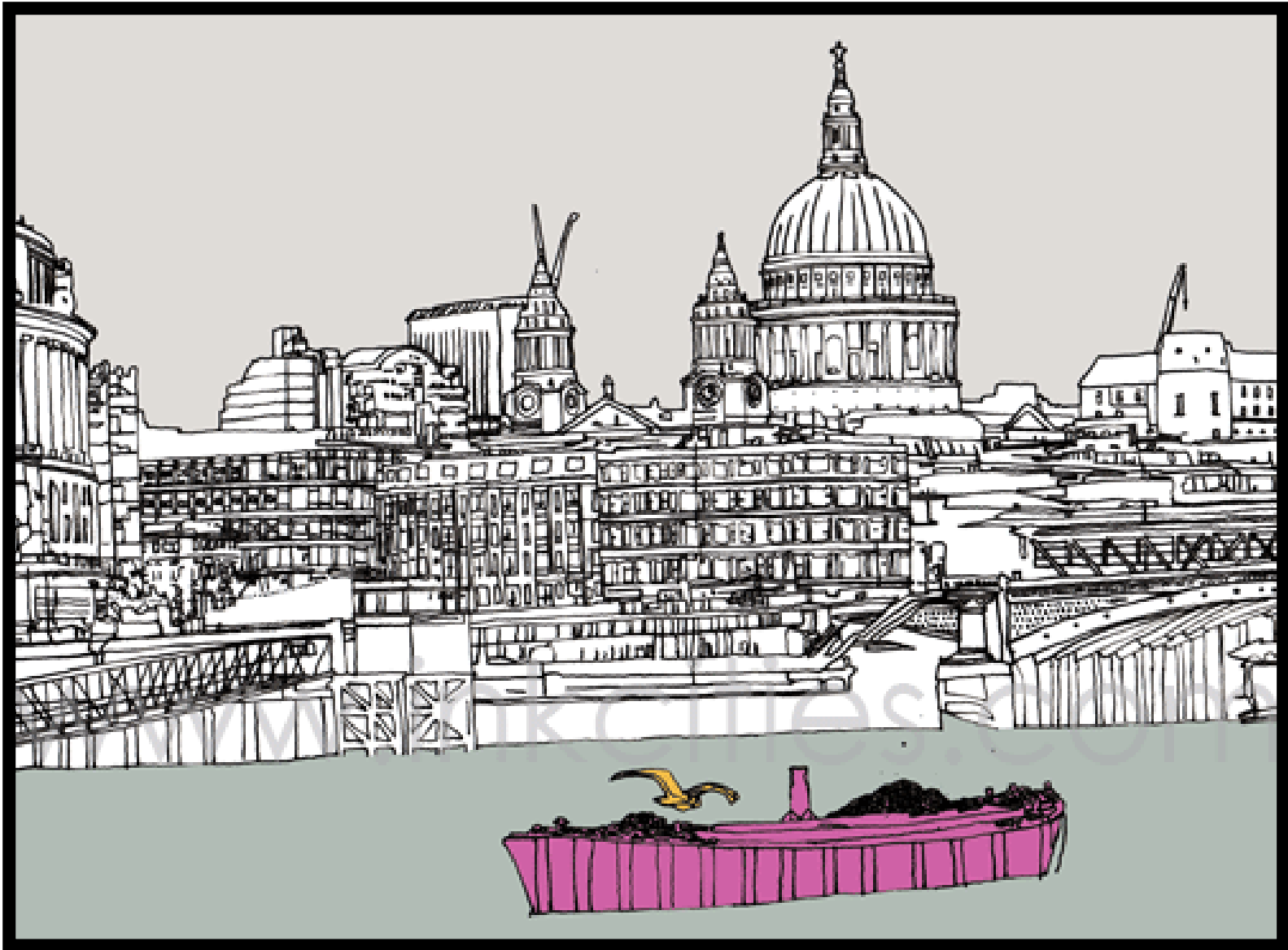
Day, Paul In the Country



Day, Paul Village Scene



Bush, Ken Pilgrims_Way



Rollett Claire St Paul-Cathedral-Boat



Dali Salvador 1938 Mountain Lake



Atget, Eugene 1898 Environs Amiens albumin print



Avery ,Milton 1955 Birds and Sea



Bennet William James 1840 Niagara Falls



Braque Georges 1907 The Port of La Ciotat



Braque Viaduct at L'Estaque



Braque Georges 1909 Harbour



Bruegel, Pieter the Elder tower-of-babel



Calame Alexandre 1839 Fallen Tree



Cezanne Paul 1900 Chateau Noir



Christo 1969 Packed Coast Project for Australia near Sydney



Constable John 1820 Salisbury Cathedral



Corinth, Lovis 1890s Woodland Path



Corot Jean 1834 Forest of Fontainebleau



Courbet Gustave 1872 Boats on a beach



Crosey Jasper 1851 The Spirit of War



Dali Salvador 1938 Mountain Lake



de Vlaminck Maurice 1906 Tugboat on the Seine



Dearth Henry 1911 Flecks of Foam



Derain Andre 1905 Mountains at Collioure



Escher MC 1931 Atrani, Coast of Amalfi



Finlay, Ian Hamilton



Finlay, Ian Hamilton Fleur de l'air



Finlay, Ian Hamilton 1925 Order



Gauguin 1890 Haystacks in Brittany



German 16th c 1544 Landscape with castle



Gorky, Arshile 1944 Virginia Landscapes



Hart Benton, Thomas 1964 Trail Riders



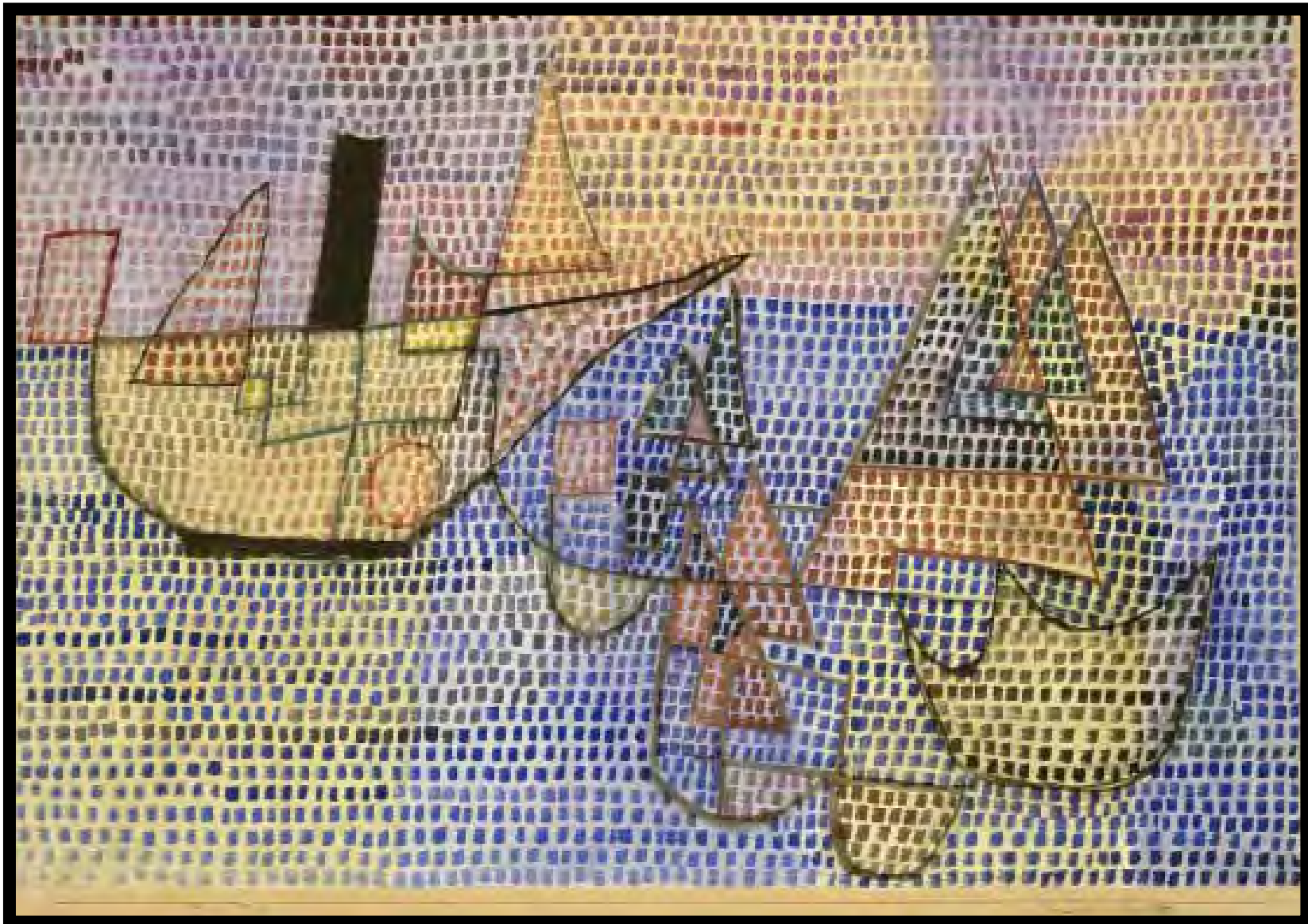
Hartley, Marsden 1922 Landscape no 5



Homer Winslow 1901 Coming Storm



Huge, Jurgan 1875 Composite harbour Scene with Castle



Klee, Paul 1931 Dampfer und Segelbote



Larciani, Giovanni c1515 Scenes from a legend



Claude Lorrain Embarkation of the Queen of Sheba



Lorrain, Claude Seaport



Monet, Claude 1888 Morning Haze



Neudecker creating landscape



Neudecker, Mariel 2007 2.5 million light years



Neudecker, Mariel 2008 This thing called darkness



Neudecker, Mariele Landscape



Patinir, Joachim Go to the Underworld



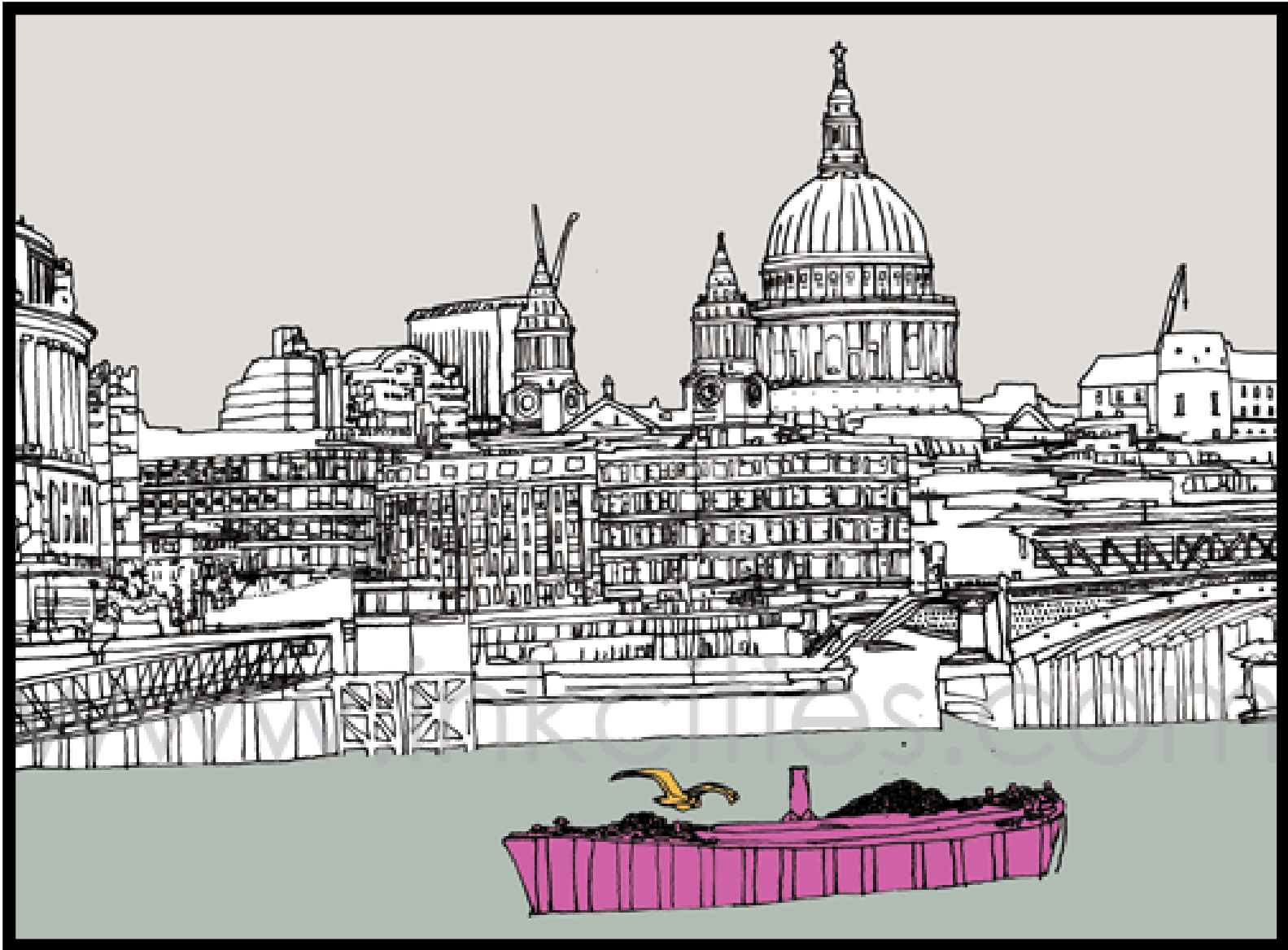
Patinir, Joachim Landscape with St Jerome



Ranger Henry Ward 1910 Spring Woods



Renior 1879 The Vintagers



Rollett Claire St Paul Cathedral Boat



Rothko, Mark 1936 Rural Scene



Rousseau Henri 1910 Tropical Forest with Monkeys



Turner Joseph 1827 A yorkshire River



Twatchman John 1890 Winter Harmony



Vuillard, Eduard 1894 Landscape of the Ile de France



Wood, Grant 1939 New Road



Zorach, William Untitled Undated

CLOUDS in LANDSCAPE ART



Title: Route de Louveciennes

Artist: Camille Pissarro, a nineteenth century French Impressionist painter

Clouds: There are puffy little cumulus clouds in the sky above the town.

The clouds have distinct edges and cumulus shapes.



Title: The Lake of Terni

Artist: Jean-Baptiste Camille Corot, a nineteenth century French painter

Clouds: The clouds in this painting look like mid-level clouds made of little puffs of white – perhaps altocumulus clouds.



Title: The Old Berkshire Hunt

Artist: John Goode, a nineteenth century British artist

Clouds: It may have rained on the day depicted in this painting. The clouds may be the bottom of cumulonimbus.



Title: The Beach at Sainte-Adresse

Artist: Claude Monet, a nineteenth century French Impressionist painter

Clouds: Altocumulus clouds that look like little puffs are painted with large brushstrokes of soft white and blue



Title: Field of Poppies

Artist: Claude Monet, a nineteenth century French Impressionist painter

Clouds: low cumulus clouds with distinct edges and puffy shapes



Title: The Tower of London

Artist: Robert Havell, an early nineteenth century British artist

Clouds: Mostly elongate mid-level clouds called altostratus



Title: Seascape Study with Rain Cloud

Artist: John Constable (1776-1837) British artist

Clouds: Cumulonimbus clouds can turn dark and cause rain. The rain is usually not widespread. Instead it is in one spot, as he painted.



Title: Weymouth Bay

Artist: John Constable (1776-1837) British artist

Clouds: Cumulus clouds that are beginning to grow vertically. They might have turned into a thunderstorm later in the day.



Title: Cloud Study

Artist: John Constable (1776-1837) British painter

Clouds: Cumulus clouds in front and wispy cirrus clouds behind



Title: Place Saint-Marc a Venise, Vue du Grand Canal

Artist: Eugene Bourdin (1824-1898) nineteenth century French painter

Clouds: The clouds that are higher in the atmosphere might be altocumulus or stratocumulus. The low clouds look like cumulus.



Title: The Grand Canal, Venice

Artist: Joseph Mallord William Turner, British artist

Clouds: This is a type of altocumulus cloud sometimes called a mackerel sky because it is like the markings of a mackerel.



Title : View of Delft

Artist: Jan Vermeer (1632-1675) Dutch painter

Clouds: The clouds in this painting look like stratocumulus clouds.



Title: Garden of Rockies

Artist: Albert Bierstadt, nineteenth century American landscape painter

Clouds: In the center of the valley in this painting there is a low stratus cloud also called fog. There are some stratocumulus in the upper right.



Title: Storm in the Rocky Mountains

Artist : Albert Bierstadt, nineteenth century American landscape painter

Clouds: The clouds have the rounded crisp edges and vertical development of cumulonimbus clouds.



Title: The Lackawanna Valley

Artist: George Inness, a nineteenth century American painter

Clouds: There is a low and uniform layer of stratus clouds. Note that the smoke from the chimney is going straight up so there must be little wind.



Title: Saint-Mammes

Artist: Alfred Sisley, nineteenth century English Impressionist painter

Clouds: There are just a few small cumulus clouds in the upper left.



Title: Seacoast

Artist: Richard Parkes Bonington (1802-1828) English landscape painter

Clouds: This sky has a uniform cover of stratus or altostratus clouds.



Title: Le Pont des Arts

Artist: Pierre-Auguste Renoir (1841-1919) French painter

Clouds: There appears to be two cloud types in the sky: mid-level altocumulus clouds and lower stratocumulus clouds.



Title: View of Toledo (Spain)

Artist: El Greco, a 17th Century artist from Greece who lived in Spain

Clouds: The towering dark clouds in the sky look like thunderstorm clouds called cumulonimbus.



Title: Evening on the Volga

Artist: Issac Levitan (1860-1900) Russian landscape painter

Clouds: There are large stratocumulus clouds above the calm river.



Title: After the Rain The Lake of Terni

Artist: Issac Levitan (1860-1900) Russian landscape painter

Clouds: After rain has ended, broken pieces of low cloud called scud are left in the sky. Behind the scud are altocumulus clouds.



Title: Cloud Shadows

Artist: Winslow Homer (1836-1910) American painter and illustrator

Clouds: Stratocumulus clouds. Do you see the cloud shadows?



Title: Flower Beds in Holland

Artist: Vincent van Gogh, nineteenth century Dutch painter

Clouds: Stratocumulus clouds look elongate like stratus, but are puffy like cumulus.



Title: Wheat Field with Cypress Trees

Artist: Vincent van Gogh, nineteenth century Dutch painter

Clouds: What types of clouds did van Gogh see in the sky when he captured this scene? It is difficult to tell!



Title: Altocumulus

Artist: Graeme Stephens, contemporary artist and atmospheric scientist at Colorado State University

Clouds: Altocumulus clouds!

Ansel Adams
America's most beloved landscape
photographer

The Tetons and Snake River, Grand Teton National Park,
Wyoming.



Ansel Adams' Style

- High Contrast
- Several light values through his use of shadows and light
- Natural
- Ansel Adams make the entire photograph interesting



Clouds and Unicorn

Ansel Adams' Inspiration

- Paul Strand
- Alfred Stieglitz
- Georgia O'Keeffe
- Dorothea Lang



Paul Strand



Alfred Stieglitz



Georgia
O'Keeffe



Dorothea
Lang

Ansel Adams was an American Photographer, he traveled all through the America's taking pictures of landscapes, mountains, canyons, streams and caves.



Noon Clouds, Mount Jackson



Church, Taos Pueblo National Historic Landmark, New Mexico.

Moon and Half Dome



Half Dome, Merced River



- Not only does Ansel Adams Use contrast through light and dark, he also uses contrast through his textures.



In rocky mountain national park

- Not only does Ansel Adams Use contrast through light and dark, he also uses contrast through his textures.



In rocky mountain national park

Jeffrey Pines, Sentinel



Michael Kenna

Contemporary Japan

History

- Born in 1953 in Lancashire, England
- Currently lives in San Francisco, CA
- Primarily takes pictures of landscapes
- Education:
 - 1965-1972: Upholland College
Lancashire, England
 - 1972-1973: Banbury School of Art
Oxfordshire, England
 - 1973-1976: London College of Printing
London, England
- Exhibitions of many prints from specific places



Japan : 2002-2005









Russia



